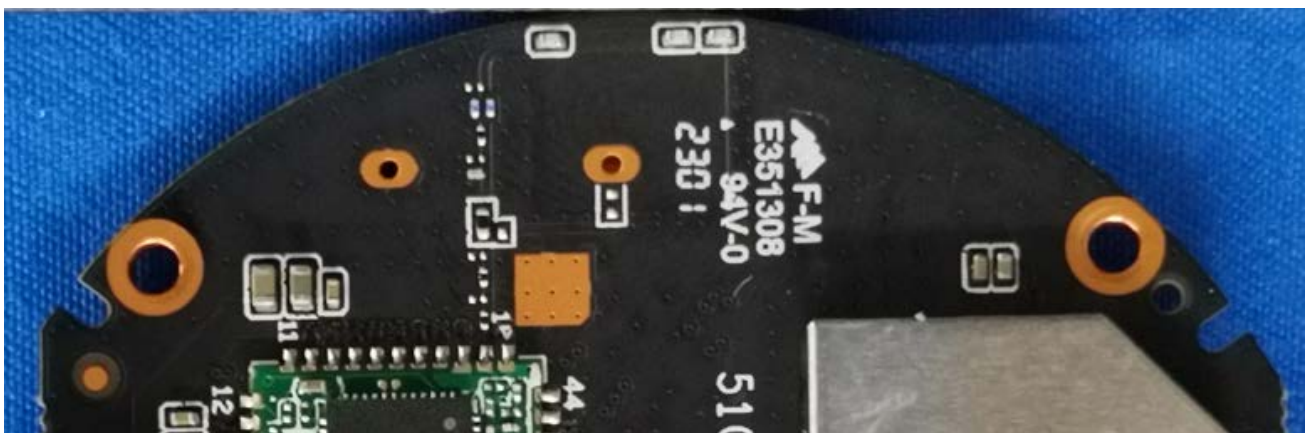


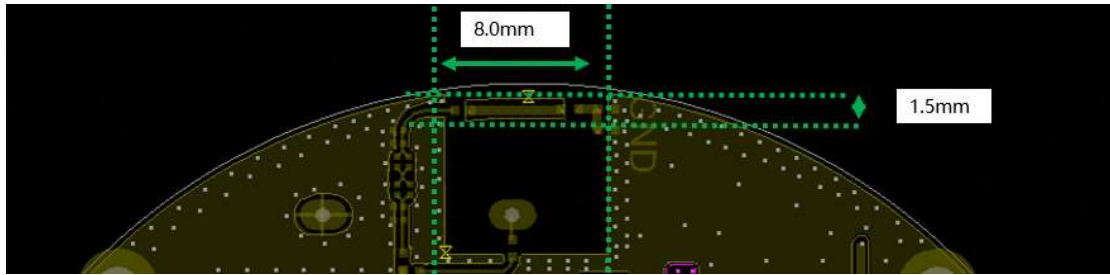
# Antenna specification

## 1、Antenna parameters

Test Ccompany	360
laboratory	GTS 2800
Test Date	2022/10/10
Test Instrument	CMW270
Frequency	2400MHZ~2500MHZ、5150 MHZ~5850MHZ
VSWR	<2
Efficiency	>50%
Impedance	50 Ohm
Polarization	Linear
Gain	1.5dBi

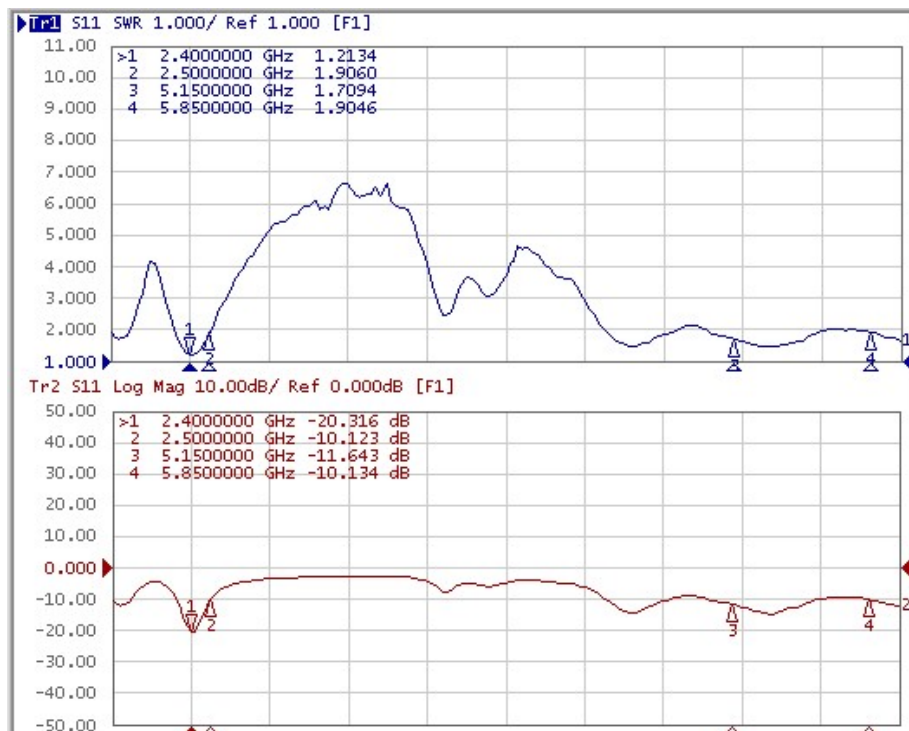
## 2、measurement





### 3、 Passive performance

#### A、 S11



#### B、 productiveness

Freq (MHz)	Effi (%)	Gain (dBi)
2400	61.2	1.2
2425	63.3	1.3
2450	60.1	1.3
2475	60.2	1.4
2500	59.5	1.3
5150	60.3	1.1
5300	60.5	1.2
5450	62.6	1.2
5600	61.4	1.5
5750	60.3	1.4
5850	59.8	1.3

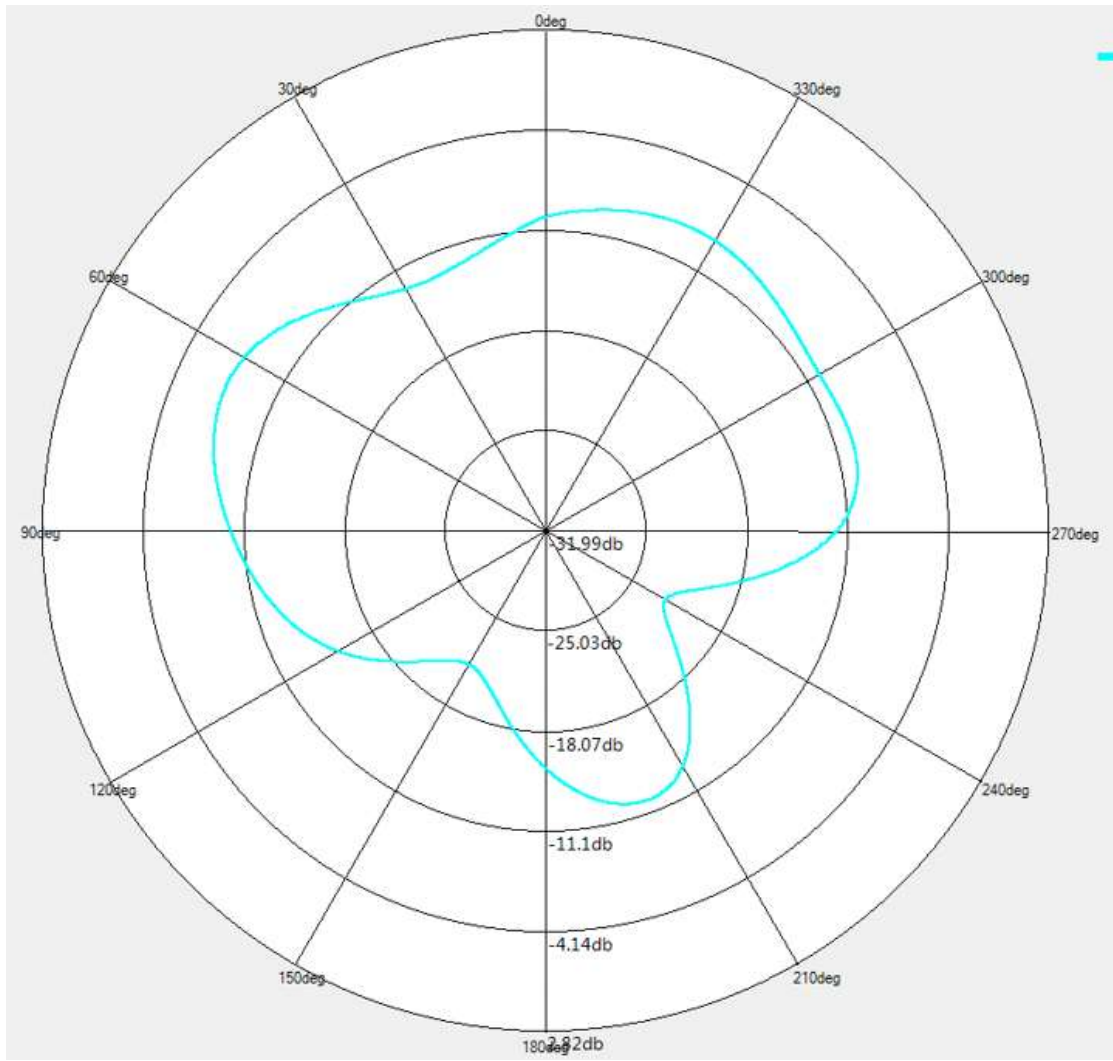
#### 4、OTA

802.11b : 11Mbps			
Test	Wifi 2G TRP		
Result	1	6	11
Frequency (MHz)	2412	2437	2462
TRP (dBm)	13.18	13.3	14.24
Test	Wifi 2G TIS		
Result	1	6	11
Frequency (MHz)	2412	2437	2462
TIS (dBm)	-80.31	-80.8	-80.79

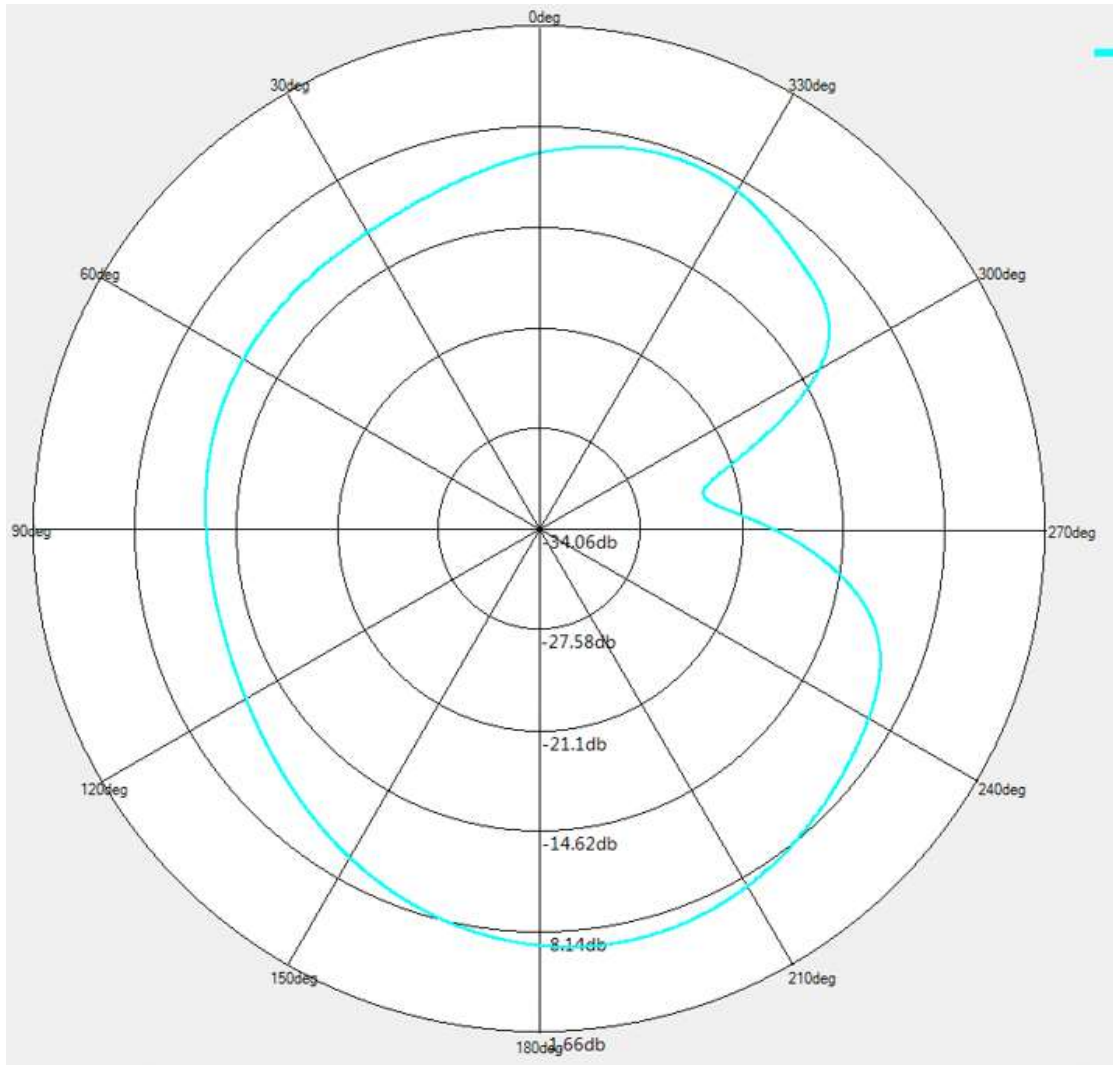
802.11a : 54Mbps			
Test	Wifi 5G TRP		
Result	36	149	165
Frequency (MHz)	5180	5745	5825
TRP (dBm)	10.95	10.23	10.88
Test	Wifi 5G TIS		
Result	36	149	165
Frequency (MHz)	5180	5745	5825
TIS (dBm)	-68.58	-70.9	-70.39

#### 5、2D/3D

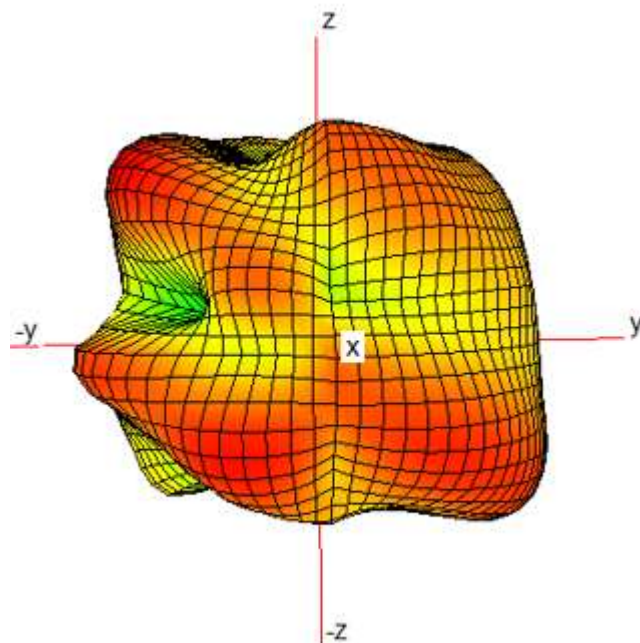
2.4GHz: H



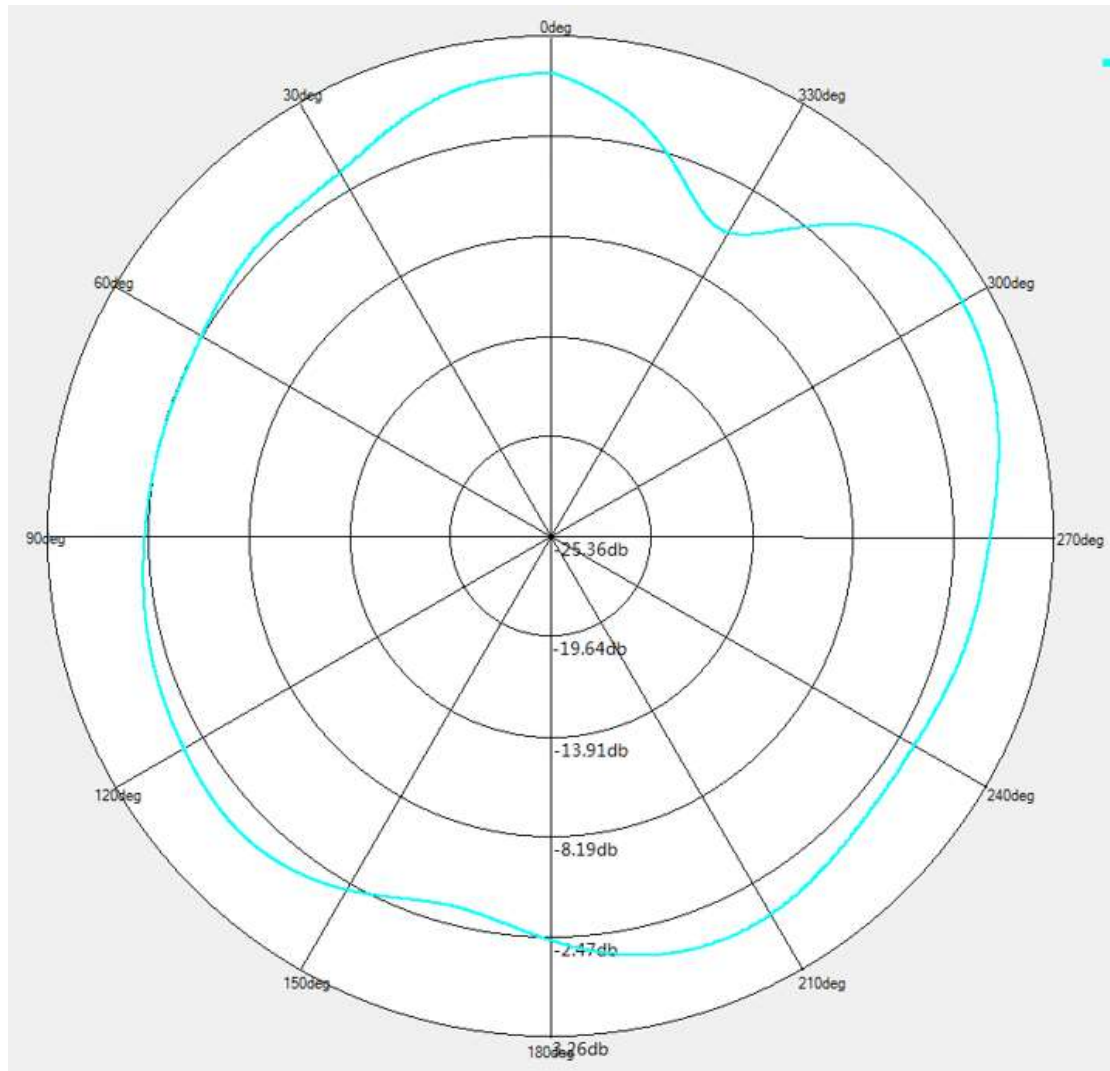
2.4GHz: V



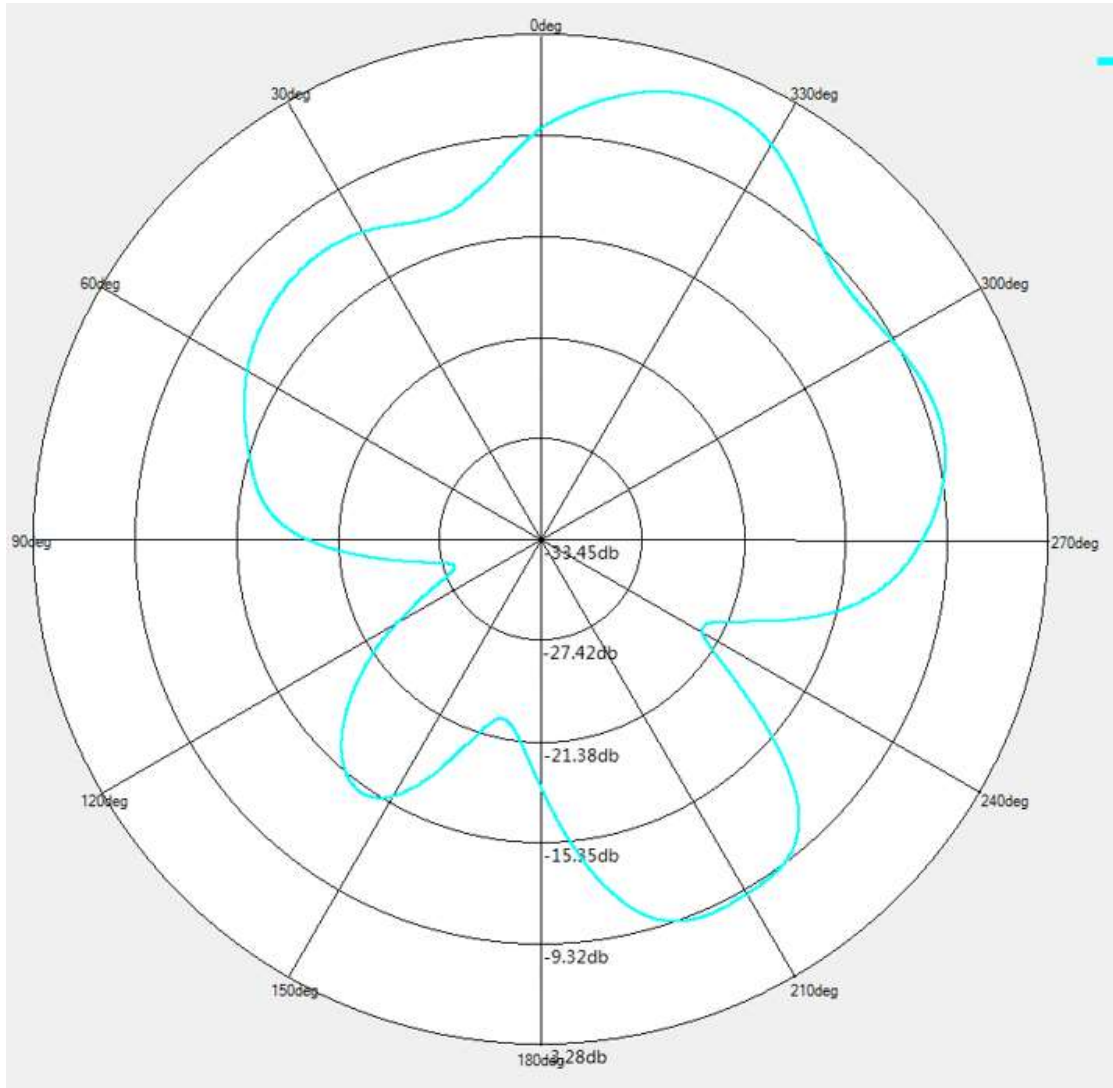
2.4GHz: 3D



5GHz: H



5GHz: V



5GHz: 3D



