

封面



目录

Table of Contents

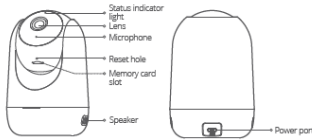
English.....	P01-P09
Français.....	P10-P17
繁體中文.....	P18-P24
Español.....	P25-P32
Русский.....	P33-P40
Bahasa Melayu.....	P41-P48
Tiếng Việt.....	P49-P56
Indonesia.....	P57-P64
ไทย.....	P65-P72

Packing list

Please check whether the main unit and all accessories are complete upon unpacking.

- | | |
|-------------------------------------|------------------------|
| 1) Main camera unit x 1 | 2) Wall mount base x 1 |
| 3) Positioning stickers x 1 | 4) Power cable x 1 |
| 5) Screws/pads for installation x 1 | 6) Power adapter x 1 |
| 7) Quick User Guide x 1 | 8) Trimble x 1 |

Product appearance



Reset hole: When the camera is powered on, press the reset hole with the trimble for 5 seconds, and the "D" sound indicates a successful reset.
Memory card: Maximum storage of 128 GB.

— 01 —

Network configuration instructions

Download and install the APP

Method 1: Scan the QR code below with your mobile phone to download and install the Botslab APP.
Method 2: Search and download the Botslab APP from App Store or Google Play, and then install it.



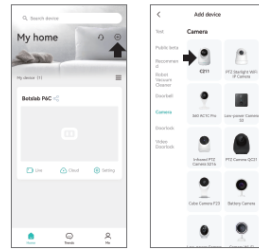
Connect to a power

Find the power socket on the bottom of the product and connect it to a power supply. When the product status indicator lights up in flashing green, it indicates that the camera is powered on for network configuration.
 Note: If the status indicator lights are not flashing green, reset the device now.

Add camera

Launch the Botslab APP, tap the "Sign up" button, and start creating your account. If you already have an account, please log in directly and add a camera.
Method 1: Tap the "+" button in the upper right corner of the APP homepage to "Add Device", tap the "Camera" button, tap and select the "Botslab P60" icon to enter the distribution page, and add the camera as instructed.
Method 2: Tap the "+" button in the upper right corner of the APP homepage to "Scan" the code, then use your mobile phone to scan the QR code at the bottom of the camera to enter the distribution page, and add the camera as instructed.

— 02 —



Note:
 • Complete the sound wave pairing in a quiet environment.
 • Please make sure the camera is connected to a 2.4GHz Wi-Fi.

— 03 —

Installation guide

Method 1: On a table

The camera can be placed on the leveled surface of a desk, table, tea table, etc.



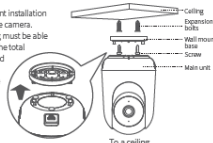
Method 2: To a ceiling

• Drill holes in the ceiling and install expansion bolts, and fix the base on the wall with screws.

• Align the fixing groove at the bottom of the camera with the buckle on the base, and gently push it in until it cannot be pushed to complete the installation.

Notes:

- Please start ceiling-mount installation after you have added the camera.
- The ceiling for mounting must be able to bear at least 3 times the total weight of the camera and the base.
- Please rotate the picture for ceiling-mount installation: Settings - Image, night vision and sound - Rotate image - Inverse camera.



— 04 —

Notes

- For better night vision imaging, do not use the camera with the front or sides of the lens near reflective materials such as glass and white walls; otherwise, the images of things nearby will be rendered bright while those far away dark or even white.
- Try to place the device in a place with good network signal reception. The distance between the device and metal objects (e.g., metal supports, metal doors, and windows) or other signal interference sources should not be too close.
- Do not place the device near the heat source, e.g., electric heater, oven, or stove fire.
- The applicable working temperature of this product is -10°C~+45°C. Please do not use it in an environment where the temperature is too high or too low.
- Please do not use this product in an environment that is excessively humid and may cause water ingress.

Operating mode description

Status indicator light	Operating mode description
Constant blue	Camera connected
Flashing blue	Someone viewed video
Constant green	Camera turned on/failure
Flashing green	Waiting for network configuration/Camera offline
Quickly flashing green	Camera upgrading

① The manufacturer reserves the right to adjust the functional status of the product through firmware upgrades or software adjustments.

— 05 —

Important

Personal information security

For the safety of you and your family, please make sure that the products you purchase are not bound to any unauthorized person. Botslab will take strict measures to protect the information security of you and your family.

Description of Hazardous material Contents

Component	Toxic and Harmful Substances and Elements					
	Lead (Pb)	Mercury (Hg)	Cadmium (Cd)	Hexavalent Chromium (Cr (VI))	Polybrominated Biphenyls (PBB)	Polybrominated Diphenyl Ethers (PBDE)
Plastic enclosure	○	○	○	○	○	○
Circuit board components	×	○	○	○	○	○
Power cable	×	○	○	○	○	○
Adapter	×	○	○	○	○	○
Lens	○	○	○	○	○	○

○ This item is in compliance with RoHS 1.0.
 ○ indicates that for each item in the product, said hazardous substance is below the requirements set forth by the standard GB/T26572.
 × indicates that the hazardous substance in at least one homogeneous material of this part exceeds the limit specified in GB/T26572. However, it satisfies limit requirements specified in the list of Exempt Applications of Hazardous Substances identified in the Management Catalog.

Note: A small patch of electronic components for special purposes is marked with "TM" in the table, such as high voltage resistors, ceramic resistors, diodes, in which the lead content may exceed 0.1%. As the scope and size in the data tables using alloy with better performance, the lead content may also be exceed 0.1%. These components are in accordance with the requirements of the exemption clause of the EU RoHS directive. Limited by the current global technology development, there are no other alternative technologies and components. The actual lead contents of these components are in accordance with environmental protection requirements.

— 06 —

This device complies with part 15 of the FCC Rules. Operation is subject to the following two conditions: (1) This device may not cause harmful interference, and (2) this device must accept any interference received, including interference that may cause undesired operation.

This equipment has been tested and found to comply with the limits for a Class B digital device, pursuant to part 15 of the FCC Rules. These limits are designed to provide reasonable protection against harmful interference in a residential installation. This equipment generates uses and can radiate radio frequency energy and, if not installed and used in accordance with the instructions, may cause harmful interference to radio communications. However, there is no guarantee that interference will not occur in a particular installation. If this equipment does cause harmful interference to radio or television reception, which can be determined by turning the equipment off and on, the user is encouraged to try to correct the interference by one or more of the following measures:

- Reorient or relocate the receiving antenna.
 - Increase the separation between the equipment and receiver.
 - Connect the equipment into an outlet on a circuit different from that to which the receiver is connected.
 - Consult the dealer or an experienced radio/TV technician for help.
- Any Changes or modifications not expressly approved by the party responsible for compliance could void the user's authority to operate the equipment.
This equipment complies with FCC radiation exposure limits set forth for an uncontrolled environment. This equipment should be installed and operated with minimum distance 20cm between the radiator & your body.

IC Caution:

This device contains licence-exempt transmitter(s)/receiver(s) that comply with Innovation, Science and Economic Development Canada's licence-exempt RSS(s). Operation is subject to the following two conditions:
This device may not cause interference.
This device must accept any interference, including interference that may cause undesired operation of the device.

Cet appareil contient des émetteurs/récepteurs exemptés de licence qui sont conformes aux flux RSS exemptés de licence de Innovation, Science et développement économique Canada. L'exploitation est soumise aux deux conditions suivantes: Cet appareil ne doit pas causer d'interférences. Ce dispositif doit accepter toute interférence, y compris toute interférence pouvant causer un fonctionnement indésirable du dispositif

Specification

Function	Operation Frequency	Max RF output power	Limit
2.4G WIFI 802.11b/g/n (HT20)	802.11b/g/n(20MHz): 2412- 2462 MHz	19.04dBm	20dBm

This product can be used across EU member states.

Manufacturer: Botslab Inc
Manufacturer address: 919 North Market Street, Suite 950, Wilmington, New Castle, Delaware, USA
Product name: Botslab Indoor Cam 2
Trade Mark: Botslab
Product model: C211