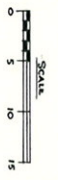
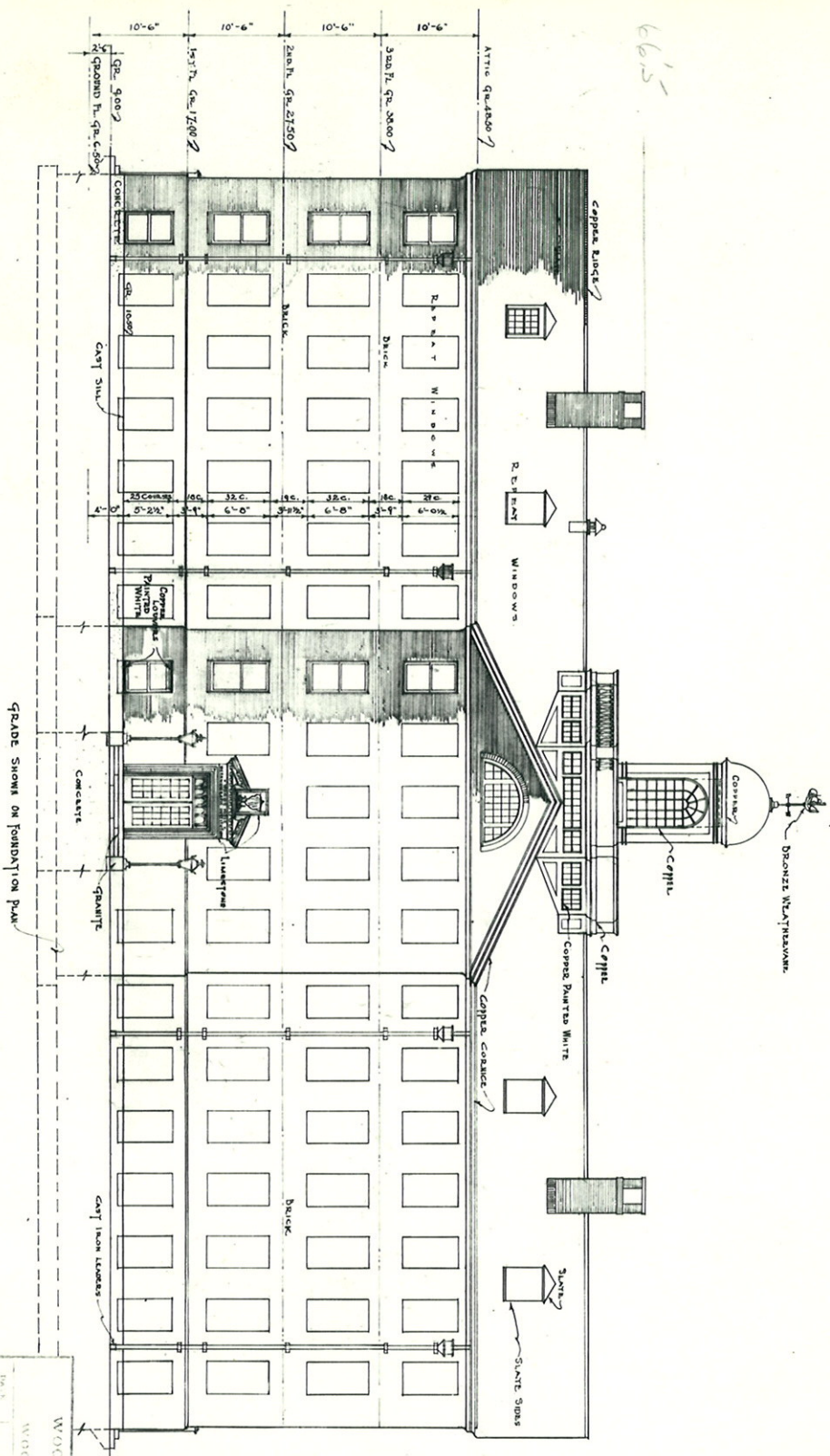


66.5

LOBBY BY GRADE 8.5'  
2ND FLOOR 19.0  
3rd 39.0  
ROOF



57330	SCALE 1/8" = 1'-0"	JOB NO. 155
WOODS HOLE OCEANOGRAPHIC INSTITUTION WOODS HOLE MASSACHUSETTS	CONCISE, SHEPHERD BISHOP & ARCHT. AT CHILFLOTS BOSTON MASS.	
NORTH (FRONT) ELEVATION		
120 AMES BLDG.		
A-1		

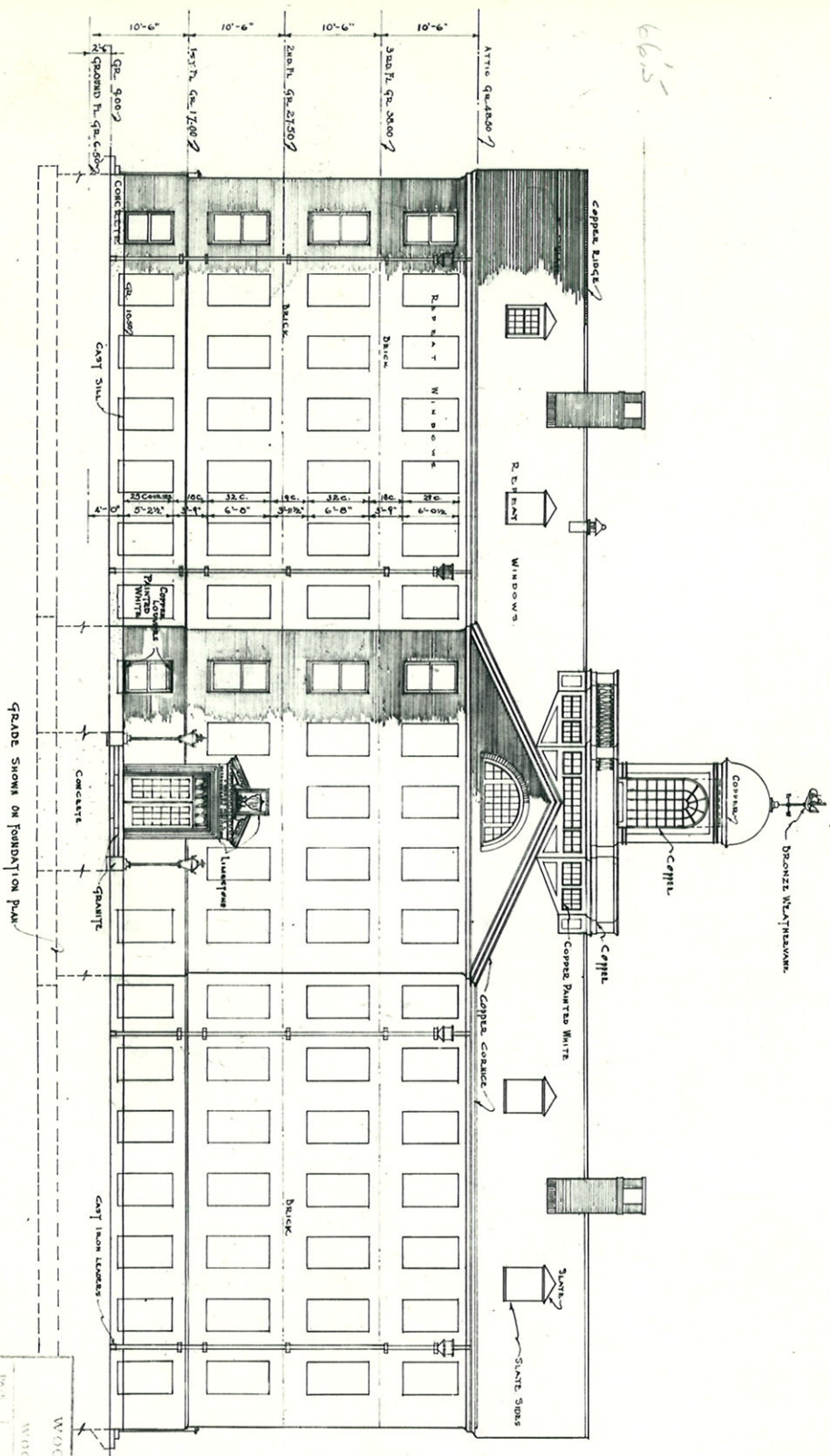
48.5  
17  
66.5

66.5

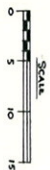


66.5

LOBBY BY GR. GRADE 8.5  
2ND FLOOR 19.0  
3rd 39.0  
4th



48.5  
17  
65.5

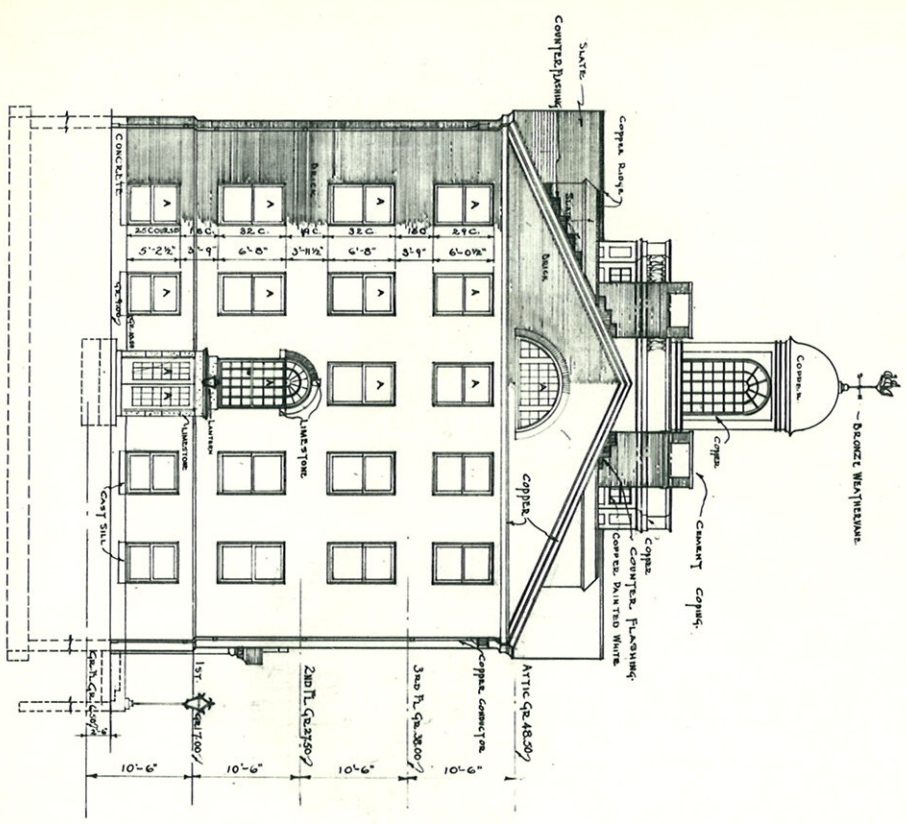


WOODS HOLE OCEANOGRAPHIC INSTITUTION WOODS HOLE MASSACHUSETTS		57/30
NORTH (FRONT) ELEVATION		SCALE 1/8" = 1'-0"
CONC'D BY SHEPHERD BURNETT & ASSOCIATES 120 AMES BLDG. BOSTON MASS.		155
<b>A.T.</b>		

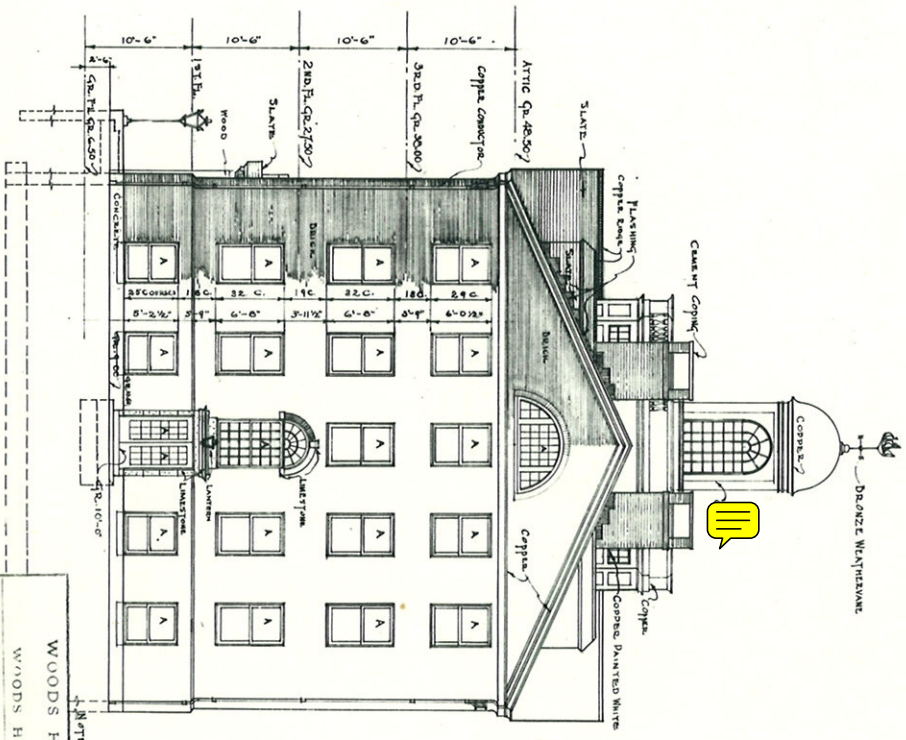
68  
47



EAST (END) ELEVATION.



WEST (END) ELEVATION.

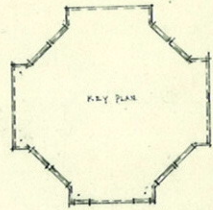
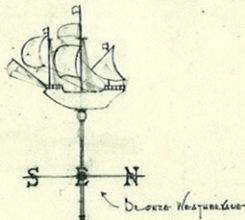


NOTE - GRADE SHOWN ON FOUNDATION PLAN.

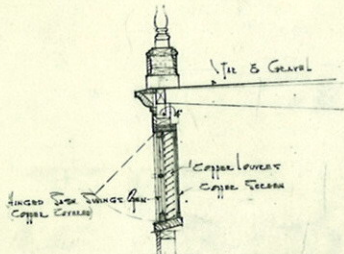
NOTE A - COPPER SAWN WITH NICE PLATE GLASS.

5276	SCALE: 1/4" = 1'-0"
IN HAND	
WOODS HOLE OCEANOGRAPHIC INSTITUTION WOODS HOLE MASSACHUSETTS	
EAST & WEST ELEVATION	
J. C. AND 155	
COLLEGE STREET BUREAU & ARCHITECTS ARCHITECTS BOSTON, MASS.	
422 AMES BLDG.	
<b>A-8</b>	

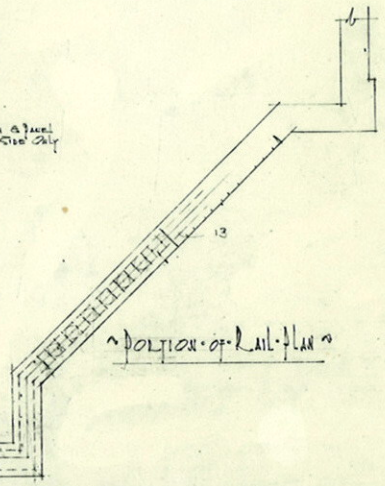
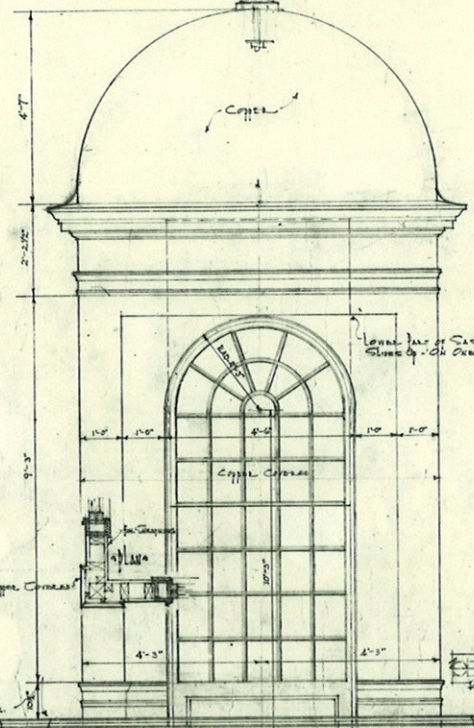




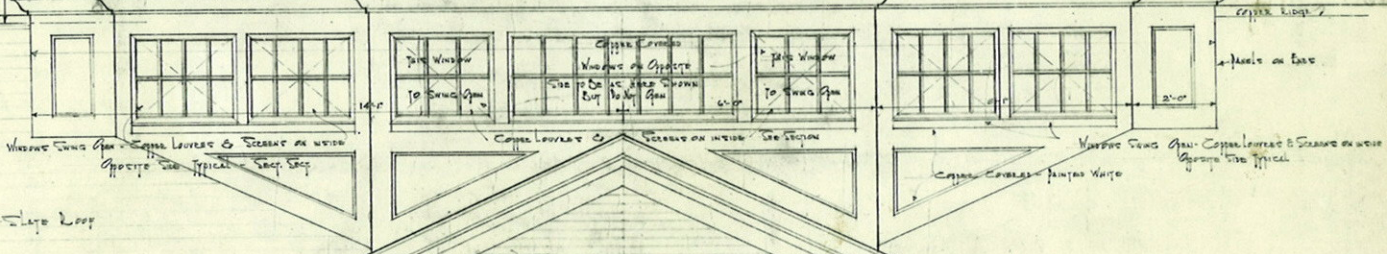
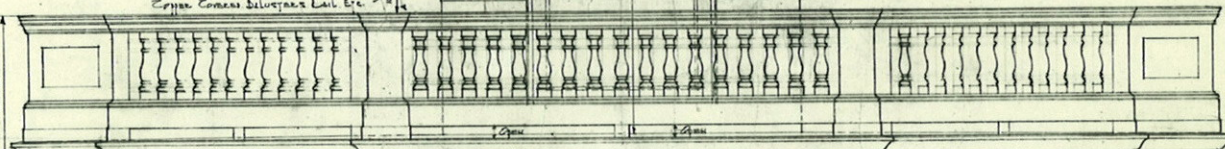
Scale Key Plan of Base Showing Windows with Louvers



SECTION THRU HINGED WINDOWS



A PORTION OF RAIL PLAN



ELEVATION OF CUPOLA

Scale 1/4" = 1'-0"

WOODS HOLE OCEANOGRAPHIC INSTITUTION WOODS HOLE MASSACHUSETTS		
DATE 5-16-31	ELEVATION OF CUPOLA	JOB NO. 158
SCALE 1/4" = 1'-0"	COLLIDGE, SHEPLEY, BULFINCH & ABBOTT ARCHITECTS	DRAWING A12
122 AMES BLDG. BOSTON, MASS.		