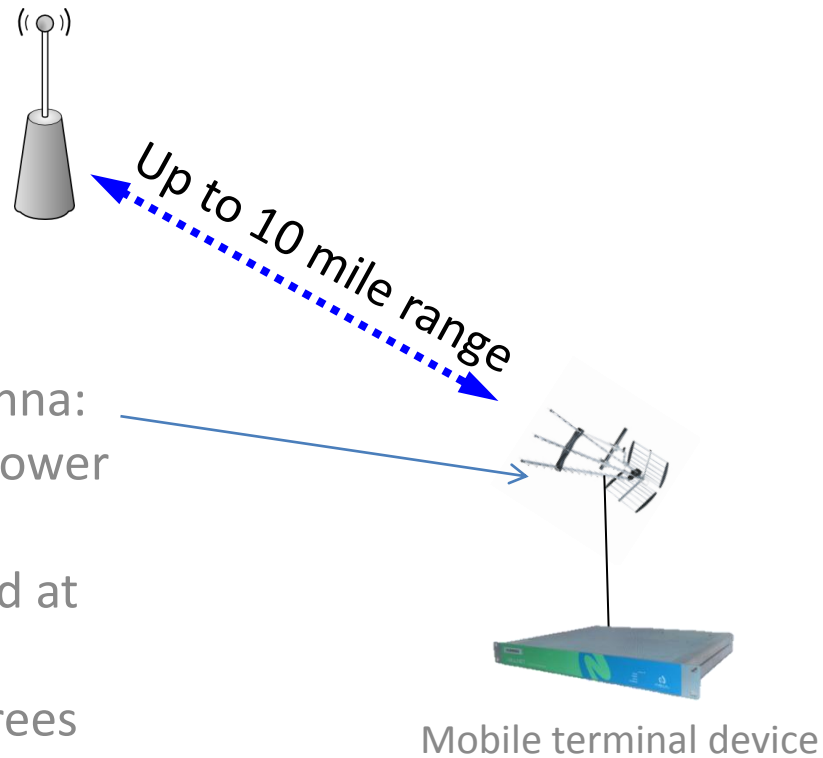


Directional Antenna Orientation

Fixed basestation. Omnidirectional antenna. Max 4W EIRP



- Terminal radio has a directional antenna:
- 45° beam width (measured at half power point).
 - Horizontal plane orientation: Pointed at basestation.
 - Vertical plane orientation: Zero degrees (flat)
 - Max 4W EIRP.