

Antenna Drawing for Antenna Registration for File Number 1043-EX-ST-2014

November 26, 2014

I. The Kingsbury Antenna Tower

- Tower Location: $43^{\circ}08'02.8'' N$ $70^{\circ}56'05.6'' W$
- Tower Height: 70 feet or 21.336 meters
- Roof Height: 35 feet or 10.668 meters
- Height of Top of Antenna from ground: 95 feet or 29 meters
- Elevation of Ground (According to Google Earth): 24 meters

The antenna that will be used for our testing is already installed and active in a TVWS trial. The antenna is mounted roughly 60 feet up the 70 foot antenna tower that is on the roof of the University of New Hampshire Kingsbury Hall Engineering building in Durham, New Hampshire. The roof is roughly 35 feet above ground, where the elevation is 24 meters according to Google Earth.

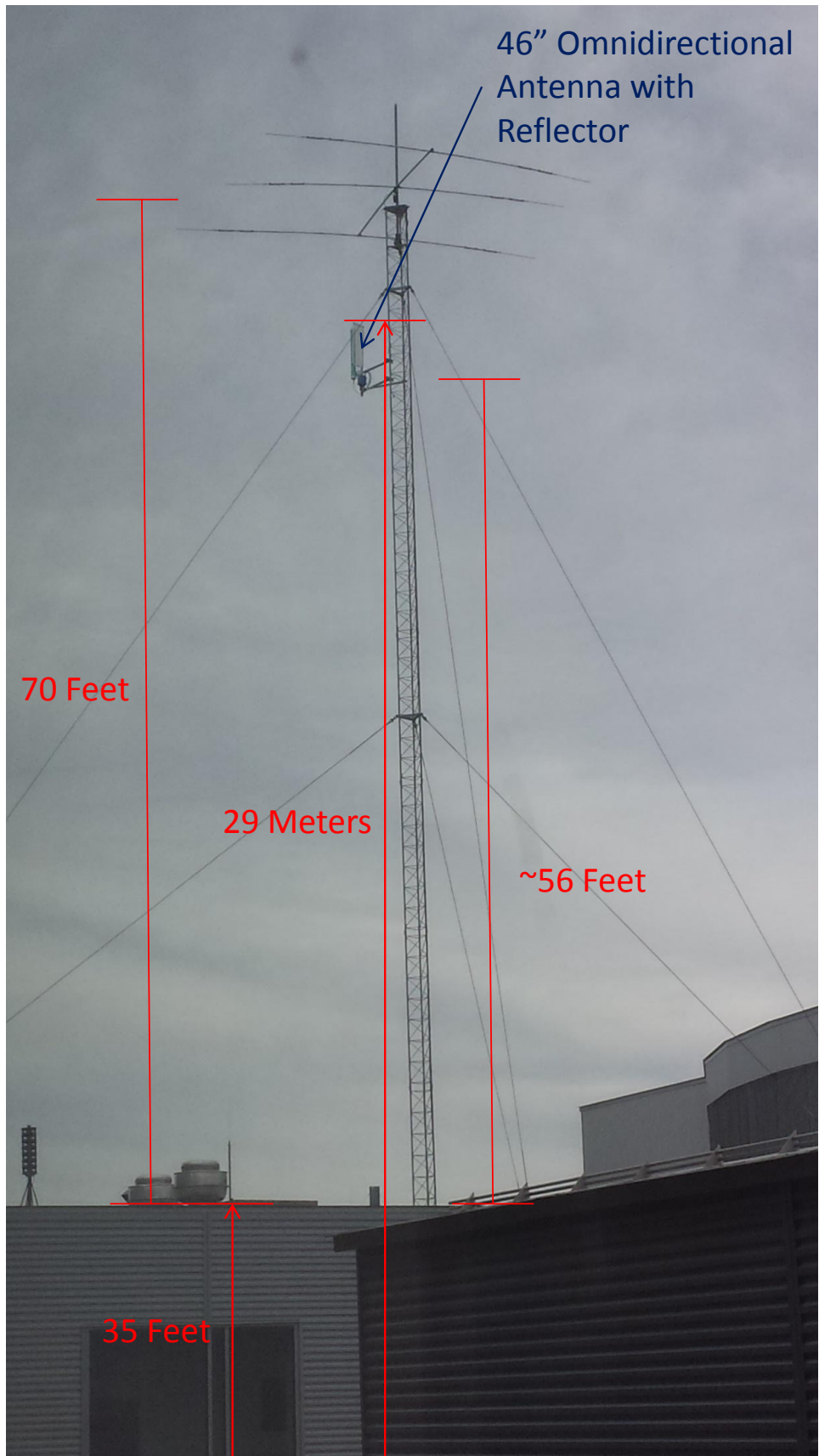


Figure 1: Picture of existing tower with the antenna that will be used for testing