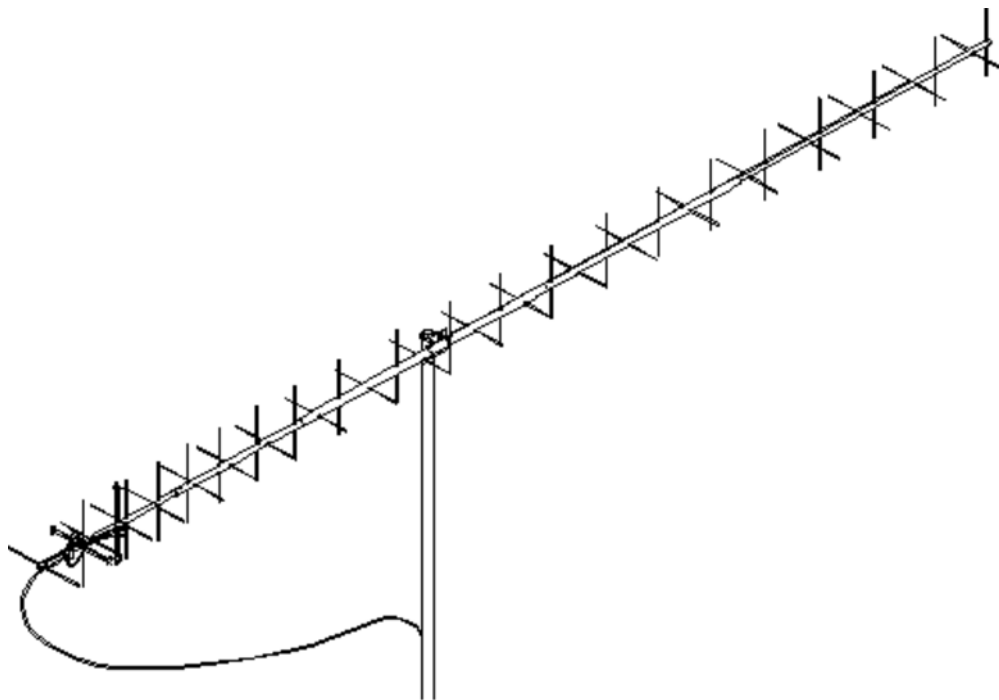




436CP42 U/G Circ. Pol. Yagi



SPECIFICATIONS

Model	436CP42 U/G
Frequency range	430 -438 MHz
Gain	16.8 dBdc
Beamwidth	21° circular
Polarity	Circular, RHC or LHC
Front to Back	25 dB Typical
Ellipticity	1.5 dB Typical
VSWR	1.5:1 & better
Feed impedance	50 W, Unbalanced
Connector	'N' Female
Power Handling	1 kW
Stacking Distance	E=68" H=68"
Turning radius	95"
Wind Area	2 sq. ft.
Mast Size	1-1/2 to 2 Inches
Weight / ShipWt.	7.8 lbs / 10 lbs UPS

FEATURES

The 436-CP42 U/G (Ultra-Gain) sets a new performance standard for UHF circular polarized antennas. Gain and F/B are excellent. The boom length is matched to the 2MCP22, and together they form an unbeatable satellite communications package. The extremely clean pattern maximizes forward gain and F/B. The pattern is important in order to match the antenna's noise temperature with modern low-noise preamps. The

CP42 is also excellent for ATV, repeater operation, and long haul tropo DX and EME around 432 MHz.

The driven element and 'T' blocks are CNC machined, with connectors O-ring sealed for low maintenance and long-term peak performance. Internal connections are embedded in a space-age silicone gel that seals out moisture and improves power handling. The 3/16" 6061-T6 rod elements are centered in the boom to minimize interaction and maintain low ellipticity. Insulators are UV stabilized and locked in place with stainless retainers. The central boom section is 1-1/2" dia., tapering, front and rear, through 1-1/4" sections to 1" ends. If you are looking for rugged construction and top-notch performance, For EME use, M2 can supply the optional parts needed to convert these to dual polarity Yagis. Contact us for more information.

4402 N. Selland Ave, Fresno CA 93722 Ph 559.432.8873 FAX 559.432.3059

<http://www.m2inc.com> email: sales@m2inc.com