

Tree Area - Approx
30 m max tree
height, mixed pine
& deciduous located
approximately as
shown in Bird's Eye
View figure

Multiple Trees



RADAR

15 m Max

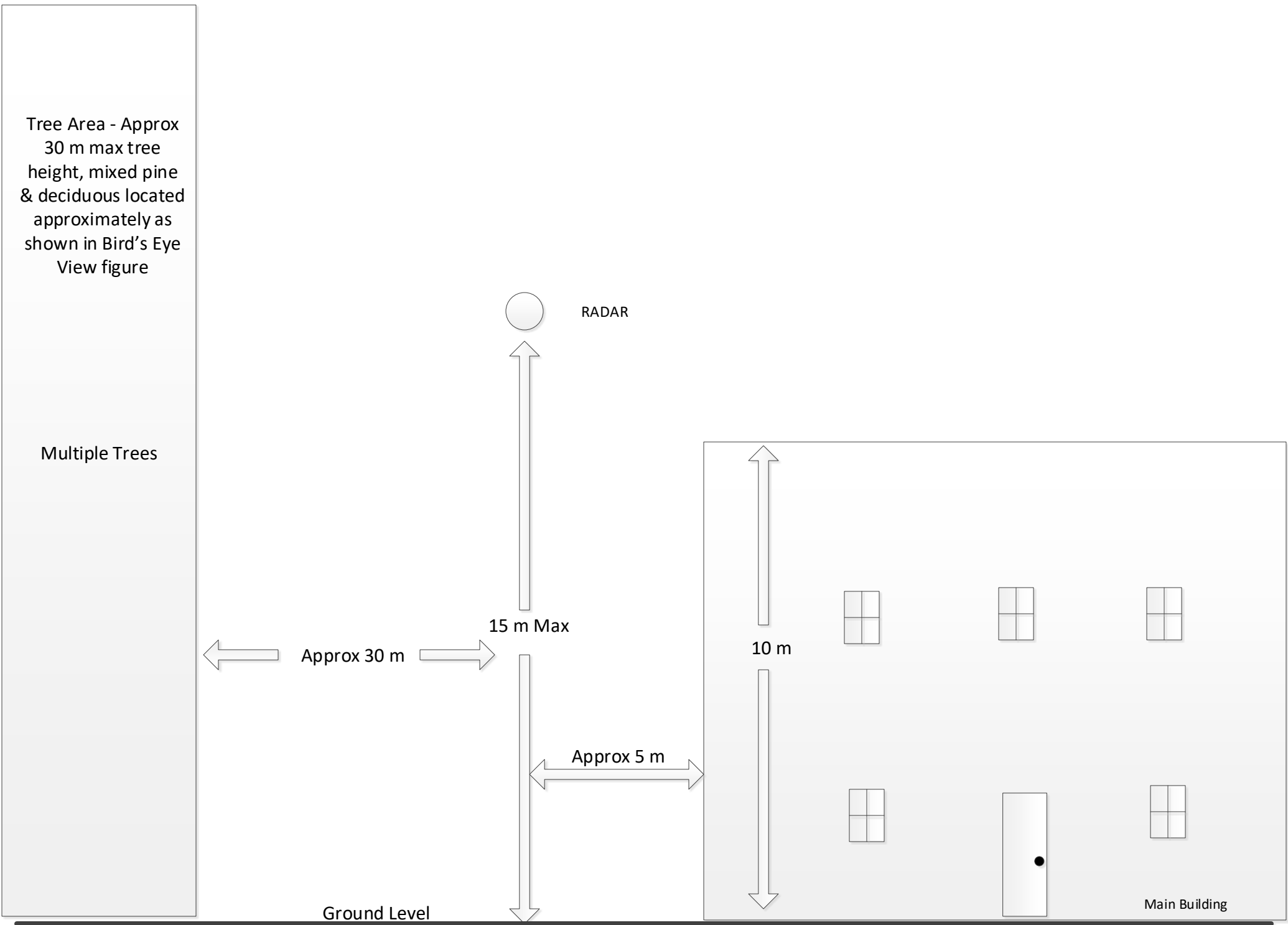
Approx 30 m

10 m

Approx 5 m

Ground Level

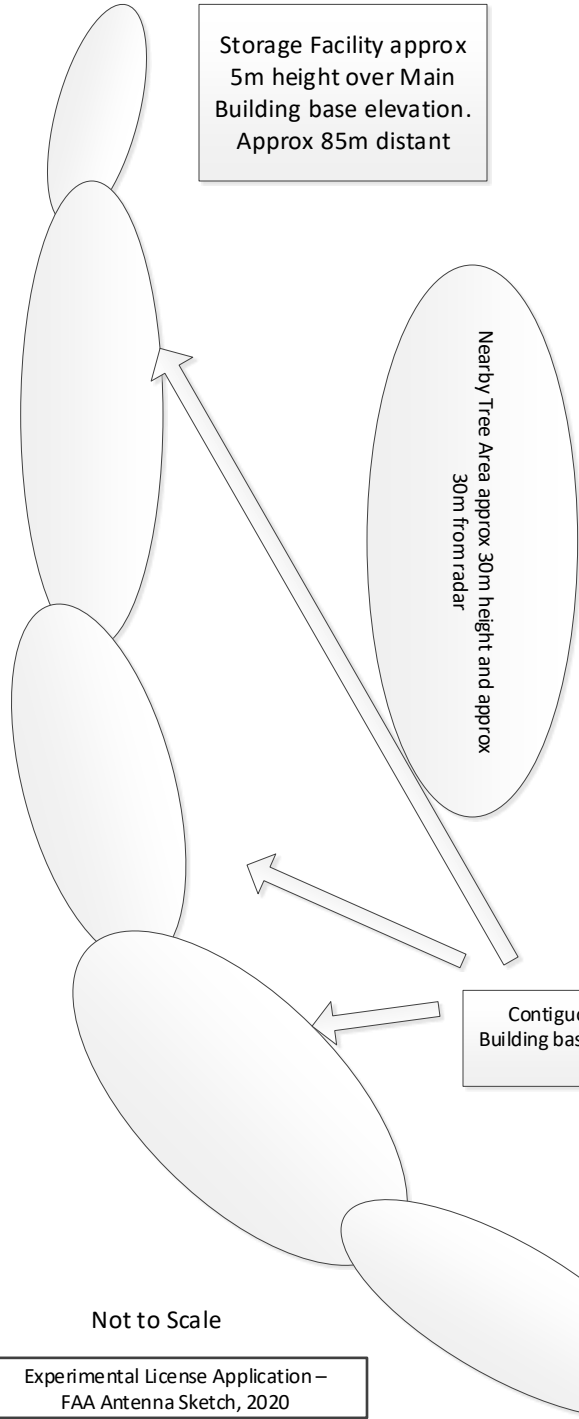
Main Building



Tree Area – max height approx 40 m height over building base elevation. Approx 150M distant

Storage Facility approx 5m height over Main Building base elevation. Approx 85m distant

Professional Building approx 20m height over Main Building base elevation. Approx 100m distant



Nearby Tree Area approx 30m height and approx 30m from radar

8 M high embankment

4 M high embankment



RADAR
15m max height

Main Building – 10m height

Contiguous Tree Area – max height approx 40 m height over Main Building base elevation. Distance from building varies from approx 50 to 200m

Bird's Eye View

Not to Scale

Experimental License Application –
FAA Antenna Sketch, 2020

Note: Other more distant objects also present: Buildings, towers, tanks, trees