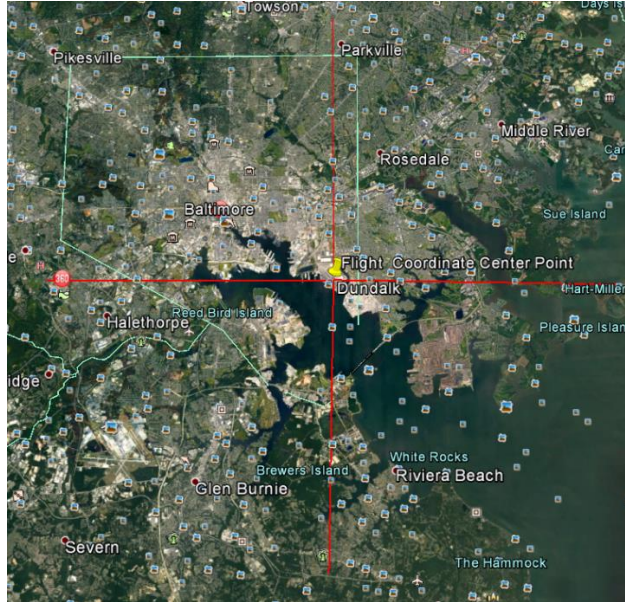


Test Locations

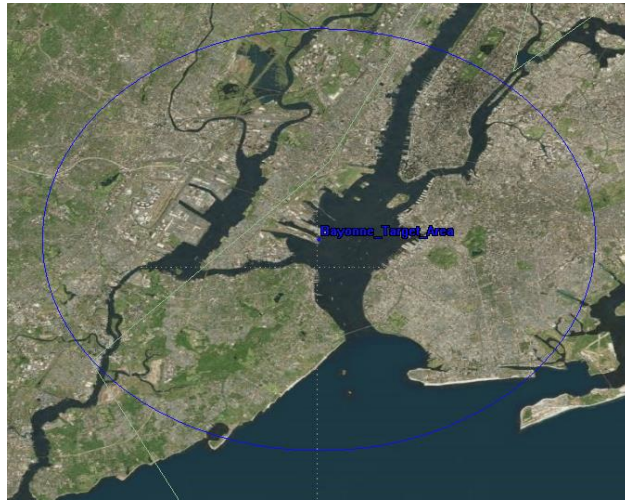
1. Port of Baltimore

- a. Operation will be limited to an area within a 15 km radius of the Seagirt Marine Terminal, Port of Baltimore 39.256407 degrees North latitude, 76.545464 degrees West longitude.



2. The Bayonne, New Jersey

- a. Operation will be limited to an area within a 15 km radius of the Tear Drop Memorial 40.663620 degrees North latitude, 74.069021 degrees West longitude.

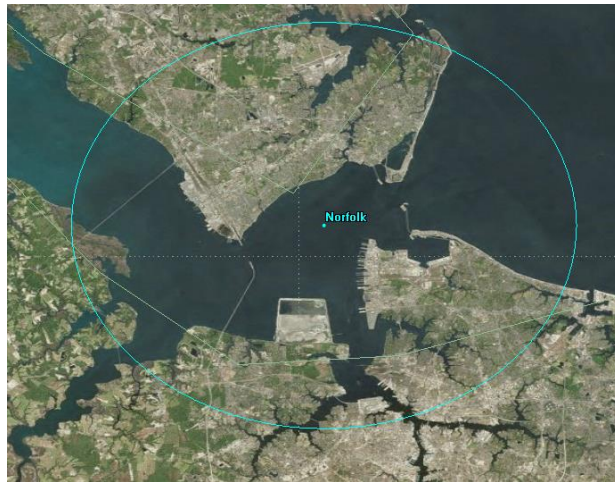


3. Oil Storage Containers around Port Reading, NJ

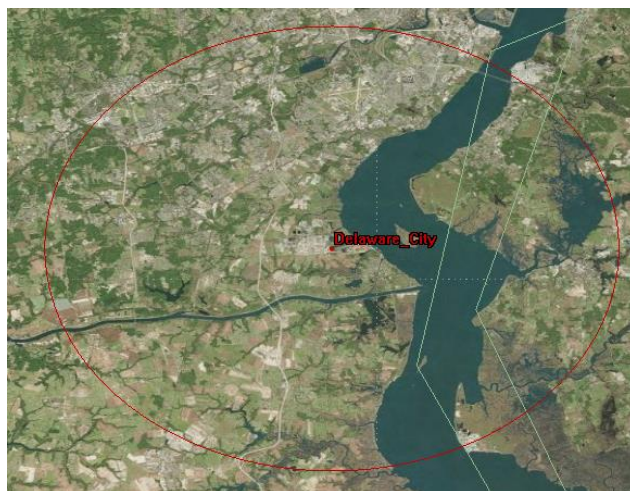
- a. Operation will be limited to an area within a 15 km radius of 40.577426 degrees North latitude, 74.245575 degrees West longitude.



- 4. Norfolk, VA
 - a. Operation will be limited to an area within a 15 km radius of 36.972442 degrees North latitude, 76.355078 degrees West longitude.

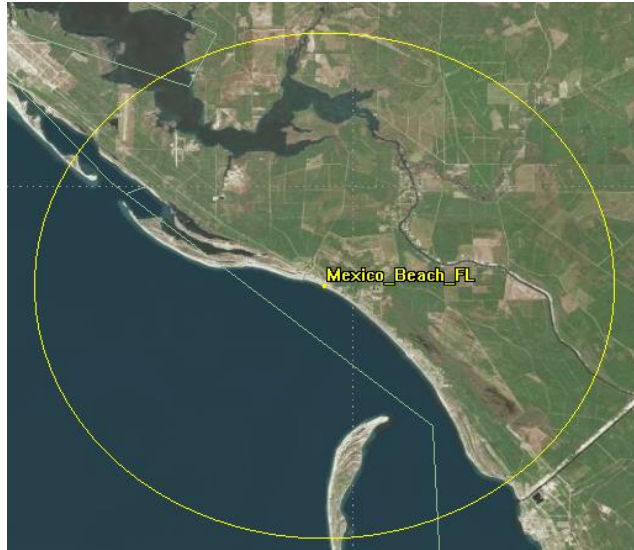


- 5. Delaware City, DE
 - a. Operation will be limited to an area within a 15 km radius of the 39.584098 degrees North latitude, 75.618260 degrees West longitude.



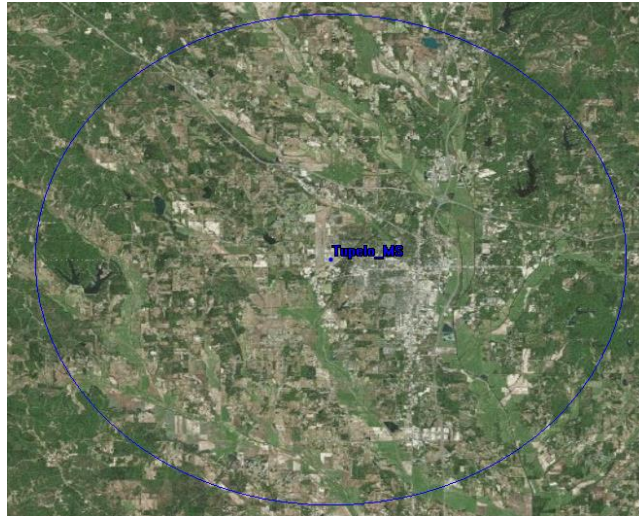
- 6. Mexico Beach, FL

- a. Operation will be limited to an area within a 15 km radius of the 29.947041 degrees North latitude, 85.418620 degrees West longitude.



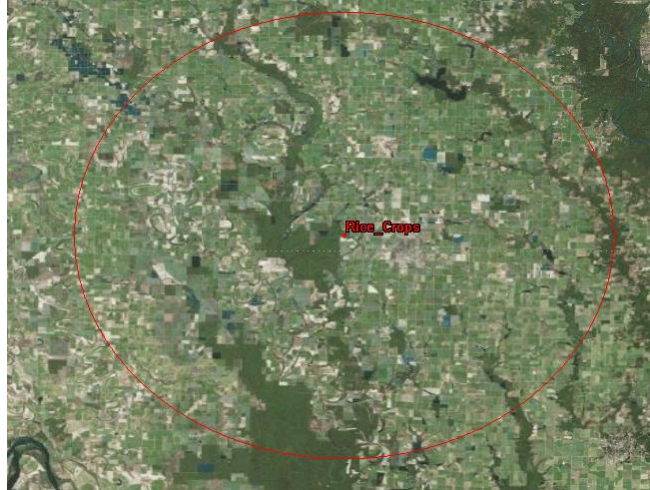
7. Tupelo, MS

- a. Operation will be limited to an area within a 15 km radius of the 34.261767 degrees North latitude, 88.763933 degrees West longitude.



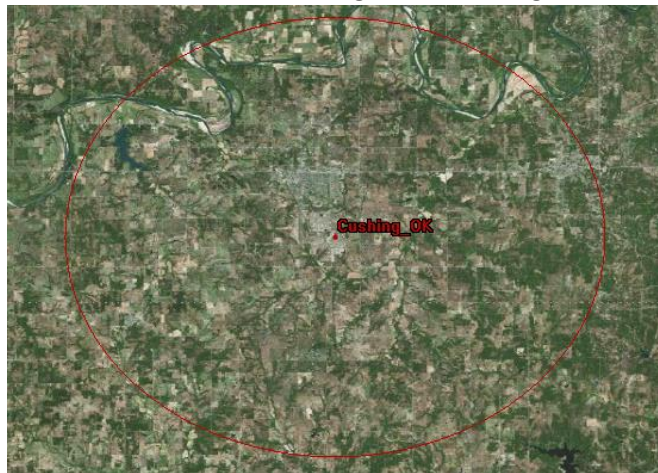
8. Stuttgart, AR

- a. Operation will be limited to an area within a 25 km radius of the 34.504668 degrees North latitude, 91.613918 degrees West longitude.



9. Cushing, OK

- a. Operation will be limited to an area within a 15 km radius of the 35.945335 degrees North latitude, 96.746332 degrees West longitude.



10. Bates City, MO

- a. Operation will be limited to an area within a 15 km radius of the 39.017325 degrees North latitude, 94.088921 degrees West longitude.



11. North Platte, NE

- a. Operation will be limited to an area within a 15 km radius of the 41.152492 degrees North latitude, 100.839740 degrees West longitude.



12. Tucson, AZ

- a. Operation will be limited to an area within a 15 km radius of the 32.167592 degrees North latitude, 110.859514 degrees West longitude.

