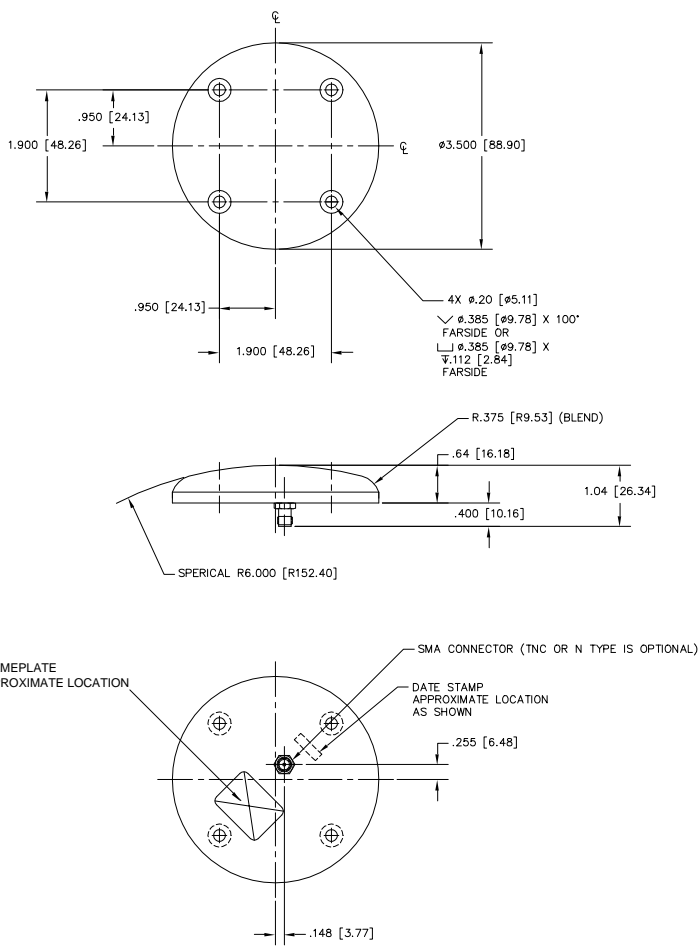


NOTICE OF PROPRIETARY RIGHTS
 THIS DOCUMENT CONTAINS CONFIDENTIAL TECHNICAL DATA INCLUDING TRADE SECRETS PROPRIETARY TO ANTCOM CORP. DISCLOSURE OF THIS DATA TO YOU IS EXPRESSLY CONDITIONED UPON YOUR AGREEMENT THAT ITS USE IS LIMITED TO USE WITHIN YOUR COMPANY ONLY (AND DOES NOT INCLUDE MANUFACTURE OR PRODUCTION). ANY OTHER USE IS STRICTLY PROHIBITED WITHOUT WRITTEN CONSENT OF ANTCOM CORP.

REVISIONS				
ZONE	REV	DESCRIPTION	DATE	APPROVED



SPECIFICATIONS

ELECTRICAL:
 FREQUENCY: L1: (1575.42±10) MHz
 L2: (1227.0±10) MHz
 VSWR: 1.5:1
 OUTPUT IMPEDANCE: 50 Ω
 POLARIZATION: RIGHT HAND CIRCULARLY POLARIZED (RHCP)
 ANTENNA GAIN: +3.5 dBiic
 DC GROUNDING: YES (LIGHTENING PROTECTION)
 LNA GAIN: (33.0+/-3.0) dB
 LNA NOISE FIGURE: 2.4 dB (Filter loss is Included)
 LNA P 1dB Out: +16 dBm
 LNA DRAWING CURRENT: 60 mA
 LNA VOLTAGE: (+2.8 TO +28) Volts DC, DIRECT FROM RF CONNECTOR
 REJECTION: 2 2-POLE FILTERS FOR EACH BAND

MECHANICAL:
 SIZE: DIAMETER 3.50 in. [88.90 mm]
 HEIGHT .64 in. [16.18 mm]
 WEIGHT: 6.56 oz. (.186 Kg)
 FINISH: SKYDROL RESISTANT POLYURETHANE ENAMEL
 BASE IRIDITE PER MIL-C-5441
 COLOR: GLOSS WHITE #17925 PER FED-STD-595B
 LUSTERLESS GRAY #36320 PER FED-STD-595B
 OLIVE DRAB GREEN #34031 PER FED-STD-595B
 LUSTERLESS BLACK #37038 PER FED-STD-595B
 MATERIAL: 6061-T6 ALUMINUM ALLOY BASE
 THERMOSET PLASTIC RADOME, UV, ABRASION AND SKYDROL RESISTANCE
 CONNECTOR: SMA FEMALE
 (TNC, OR N TYPE IS OPTIONAL)

ENVIRONMENTAL:
 TEMPERATURE: -67°F TO +185°F [-55°C TO +85°C]
 ALTITUDE: 70,000 ft.
 VIBRATION: 10 G's
 LEAKAGE: HERMETICALLY SEAL

FEDERAL & MILITARY SPECIFICATIONS:
DESIGN TO: FAA TSO-C144, DO-160D, DO-228, MIL-C-5541, MIL-E-5400, MIL-I-45208A, AND MIL-STD-810

QUANTITY REQD	DESCRIPTION	PART NO	SPECIFICATION	MATERIAL	FINISH	ITEM NO
4	SCREW, MOUNTING	MS24693C273	-	-	-	5
A/R	WASHER, CUSTOM C'SINK	3G15P1001-6	-	-	-	3
1	GASKET	3G15P1001-1	-	-	-	1
-2	-1	-	-	-	-	-

UNLESS OTHERWISE SPECIFIED DIMENSIONS ARE IN INCHES
 FRACTIONS DECIMALS ANGLES
 ± 1/64 ± .005 ± 1°
 TOLERANCE 5/16 PER ANSI Y14.5
 REMOVE ALL BURRS
 BREAK EXTERNAL EDGES .005 TO .015
 FILE TO R .005 TO R .020
 DIMS ON A CHAMFER E .25 ± .005
 MACHINED SURFACES 12.5
 DO NOT SCALE DRAWING

DRAWN: []
 CHECKED: []
 ENGINEER: []
 APPROVED: S. HUYNH
 01-05-23

ANTCOM CORP. TORRANCE, CALIFORNIA
OUTLINE DRAWING
L1/L2 ACTIVE
GPS ANTENNA
 DRAWING NO: 3G1215A-XS-1
 SCALE: 1/1
 SHEET 1 OF 1

- CUSTOM WASHERS AND MOUNTING SCREWS ARE SUPPLIED BY ANTCOM CORPORATION
- DIMENSIONS IN BRACKETS ARE IN MILLIMETERS [mm]

NOTES: UNLESS OTHERWISE SPECIFIED: