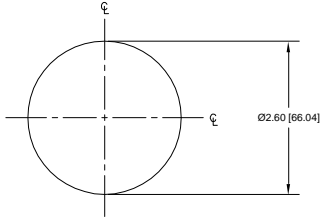


NOTICE OF PROPRIETARY RIGHTS
 THIS DOCUMENT CONTAINS CONFIDENTIAL TECHNICAL DATA INCLUDING TRADE SECRETS PROPRIETARY TO ANTCOM CORP. DISCLOSURE OF THIS DATA TO YOU IS EXPRESSLY CONDITIONED UPON YOUR ASSENT THAT ITS USE IS LIMITED TO THE WORK YOUR COMPANY ONLY AND DOES NOT INCLUDE MANUFACTURE OR PROCESSING (SHEETS). ANY OTHER USE IS EXPRESSLY PROHIBITED WITHOUT PRIOR WRITTEN CONSENT OF ANTCOM CORP.

| REVISIONS | | | | |
|-----------|-----|-------------|------|----------|
| ZONE | REV | DESCRIPTION | DATE | APPROVED |
| | | | | |



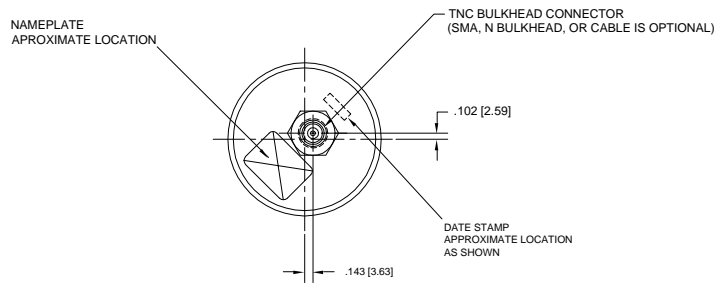
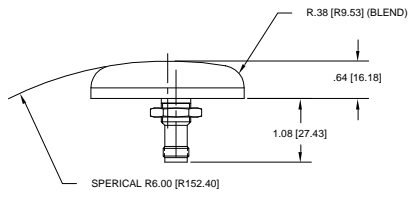
SPECIFICATIONS

ELECTRICAL:
 FREQUENCY: L1: (1575.42±10) MHz
 L2: (1227.0±10) MHz
 VSWR: 1.5:1
 OUTPUT IMPEDANCE: 50Ω
 POLARIZATION: RIGHT HAND CIRCULARLY POLARIZED (RHCP)
 ANTENNA GAIN: +3.5 dBic
 DC GROUNDING: YES (LIGHTNING PROTECTION)

MECHANICAL:
 SIZE: DIAMETER 2.60 in. [66.04 mm]
 HEIGHT .64 in. [16.18 mm]
 WEIGHT: 4.06 oz. (.115 Kg)
 FINISH: SKYDROL RESISTANT POLYURETHANE ENAMEL
 BASE IRIDITE PER MIL-C-5441
 COLOR: GLOSS WHITE #17925 PER FED-STD-595B
 LUSTERLESS GRAY #36320 PER FED-STD-595B
 OLIVE DRAB GREEN #34031 PER FED-STD-595B
 LUSTERLESS BLACK #37038 PER FED-STD-595B
 MATERIAL: 6061-T6 ALUMINUM ALLOY BASE
 THERMOSET PLASTIC RADOME, UV, ABRASION AND SKYDROL RESISTANCE
 CONNECTOR: TNC BULKHEAD FEMALE
 (SMA, N BULKHEAD, OR CABLE IS OPTIONAL)

ENVIRONMENTAL:
 TEMPERATURE: -67°F TO +185°F [-55°C TO +85°C]
 ALTITUDE: 70,000 ft.
 VIBRATION: 10 G's
 LEAKAGE: HERMETICALLY SEAL

FEDERAL & MILITARY SPECIFICATIONS:
DESIGN TO: FAA TSO-C144, DO-160D, D0-228, MIL-C-5541, MIL-E-5400, MIL-I-45208A, AND MIL-STD-810



2. MOUNTING HEX NUT AND LOCK WASHER ARE SUPPLIED BY ANTCOM CORPORATION
1. DIMENSIONS IN BRACKETS ARE IN MILLIMETERS [mm]

NOTES: UNLESS OTHERWISE SPECIFIED:

| QTY | DESCRIPTION | PART NO | SPECIFICATION | MATERIAL | FINISH | ITEM NO. |
|-----|-------------------|------------|---------------|----------|--------|----------|
| 1 | WASHER, LOCK | AN936B816 | - | - | - | 2 |
| 1 | HEX NUT, MOUNTING | 1/2-20 HEX | - | - | - | 1 |

PARTS LIST

| | | | |
|--|----------------------|--|----------|
| UNLESS OTHERWISE SPECIFIED DIMENSIONS ARE IN INCHES FRACTIONS DECIMALS ANGLES ± 1/64 .001 .010 ± 1° ± .0008 .005 ± 1° | DESIGN | ANTCOM CORP TORRANCE, CALIFORNIA OUTLINE DRAWING L1/L2 PASSIVE GPS ANTENNA | DATE |
| TOLERANCE 5VM PER ANSI Y14.5 | CHECKED | | SCALE |
| REMOVE ALL BURRS BREAK EXTERNAL EDGES .005 TO .015 FILE TO R .005 TO R .250 SCREEN FINISH FOR MIL-STD-883F DIA'S ON A COMMON C 27-005 MACHINED SURFACES | ENGINEER | | REV |
| DO NOT SCALE DRAWING | APPROVED | | DATE |
| | S. HUYNH 01-05-29 | D | 01-05-29 |

SHEET 1 OF 1