



Features and Benefits

- **External IP67 rated 4G LTE base station**
- **Simple setup via the integrated web interface**
- **Supports up to 64 active users**
- **Runs standalone or as part of larger network**
- **Integrated GPS**

Cellular Base Station

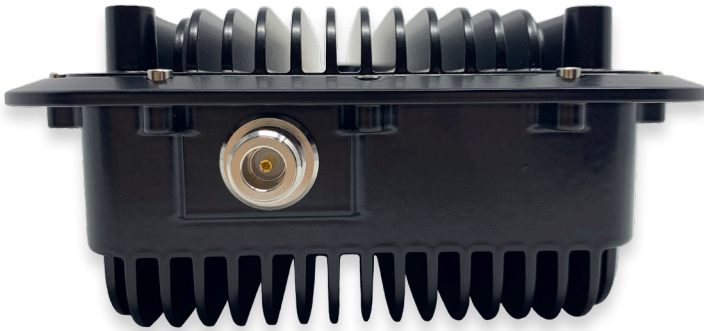
The M3 Cellular Base Station is a rugged, externally rated 4G LTE base station and integrated Core Network that provides wide-area broadband connectivity to hard to reach places.

Suitable for use in a wide range of industries including first responder, rail, utilities, manufacturing, and defense the Rugged Cellular Gateway can be used as a stand-alone LTE network or to backhaul voice and data traffic to larger networks including commercial carriers.

Capable of serving up to 64 active users at a download data rate of up to 150Mb/s, the Rugged Cellular Gateway delivers high speed, reliable, and secure 4G LTE connectivity for distances up to 9 miles.

The power-efficient IP67 rated base station can be powered by renewable power sources such as solar and wind, making it ideal for providing wide-area connectivity to locations with little or no power infrastructure.

Cellular Basestation



Specifications

4G LTE Cellular	
Version	LTE R9/10 feature sets
Supported LTE Bands	B1, B5, B28, B40 (other bands available on request)
LTE Channel Size (MHz)	5, 10, 15, 20
Duplex Modes	TDD or FDD
Max TX Power	2 x 30 dBm
Max Range Line of Sight	Up to 15 km / 9 miles
Networking	1 GbE
3GPP Compliance	R9

Evolved Packet Core Features	
PS Data	
Third-party HSS Integration, using Diameter	
Optional Internal HSS with HSS Synchronization	
Intra-MME Handover	
Multiple eNodeBs	

Physical Specifications	
Mast Mount Variant	
Size	19.30 cm H, 23.03 cm W, 9.39 cm D 7.5" H, 9.06" W, 3.69" D
Weight	1.7 kg / 3.7 lbs
Drone Mount Variant	
Size	19.30 cm H, 23.03 cm W, 6.09 cm D 7.5" H, 9.06" W, 2.3" D
Weight	1 kg / 2.20 lbs

Power Specifications	
Power Input	POE
Power Consumption	35W typical Including embedded EPC

Environmental Specifications	
Operating Temperature Range	-20°C to +50°C

Accreditations	
Trade Act Agreement compliant	Yes
Ingress Protection	Designed to meet IP67
EMC	Designed to meet IEC 301 489-1, 17, 50, 52
Safety	Designed to meet IEC62368-1

Warranty	
2-Year Deltenna Hardware Warranty included as standard.	

Product Name	Product Description
M3C-BST-B281W	M3C LTE Base Station, Band 28, FDD, 1W
M3C-BST-B051W	M3C LTE Base Station, Band 05, FDD, 1W
M3C-BST-B401W	M3C LTE Base Station, Band 40, FDD, 1W
M3C-BST-B031W	M3C LTE Base Station, Band 03, FDD, 1W
M3C-BST-B011W	M3C LTE Base Station, Band 01, FDD, 1W

Copyright© Cubic Corporation. The materials provided herein are believed to be reliable and correct at the time of creation. Cubic does not warrant the accuracy or completeness of the information, text, graphics, or other items contained within this information. Cubic further assumes no responsibility for the use of this information, and all such information shall be entirely at the user's risk.