



(700-800) MHz / (1700-2200) MHz UHF/L/S-Band Antenna,

P/N: 9B-700-800-LS-XTT-1-SS78

9.250" Tall Blade Configuration, -1 White, -2 Grey, -4 Black



ISO 9001:2008/FAA Approved Facility

ANTCOM CORPORATION . 367 Van Ness Way, Suite 602 . Torrance, CA 90501, USA . Tel: (310) 782-1076 . Fax: (310) 782-1086 . E-mail: antennas@antcom.com . http://www.antcom.com

REVISIONS				
ZONE	REV	DESCRIPTION	DATE	APPROVED

SPECIFICATIONS

ELECTRICAL:

FREQUENCY: UHF & L/S-Band
 PATTERN: (700-800) MHz and (1700-2200) MHz (Also See P/N Below)
 POLARIZATION: OMNIDIRECTIONAL
 ANTENNA GAIN: VERTICAL
 (On >4ft. Ground Plane)
 > 3 dBiI

RADIATION PATTERN: OMNI-DIRECTIONAL
 VSWR: < 2.0:1
 OUTPUT IMPEDANCE: 50 ohms
 POWER HANDLING: 100 watts
 LIGHTNING PROTECTION: DC GROUNDED

MECHANICAL:

SIZE: WIDTH 4.650 in. [118 mm], LENGTH 12.550in. [318 mm],
 HEIGHT 9.250 in. [235 mm]
 WEIGHT: 24 oz. (680g)
 FINISH: SKYDROL RESISTANT POLYURETHANE ENAMEL
 BASE IRIDITE PER MIL-C-5441

COLOR: LUSTERLESS GRAY #36320 PER FED-STD-595B
 GLOSS WHITE #17925 PER FED-STD-595B
 OLIVE DRAB GREEN #34031 PER FED-STD-595B
 LUSTERLESS BLACK #37038 PER FED-STD-595B

MATERIAL: 6061-T6 ALUMINUM ALLOY BASE
 COMPOSITE RADOME, IMPACT, ABRASION, UV, SOLVENT,
 SKYDROL RESISTANCE, AND FIRE RETARDANT

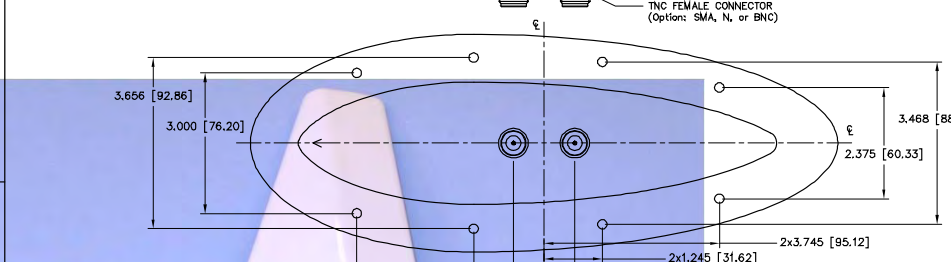
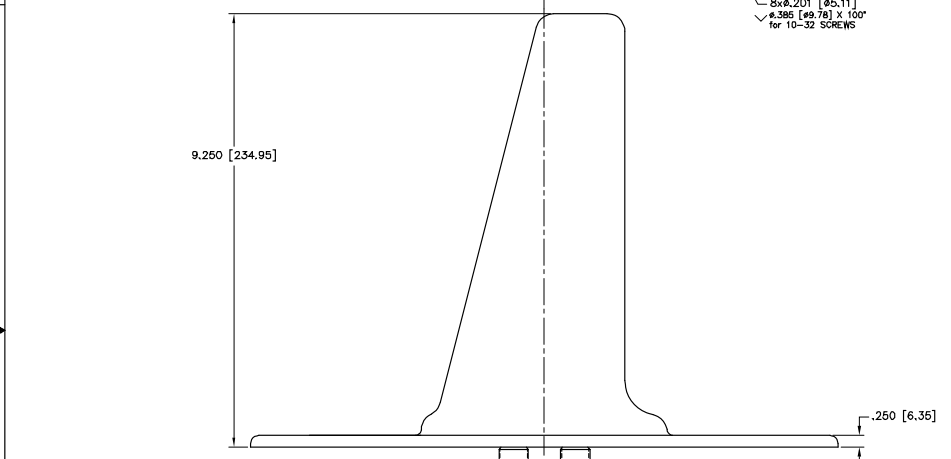
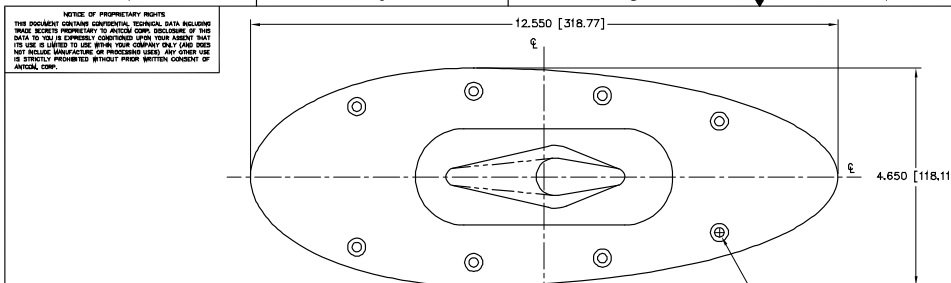
CONNECTOR: TNC FEMALE (OPTION: SMA, N, or BNC)

ENVIRONMENTAL:

TEMPERATURE: -67°F TO +185°F [-55°C TO +85°C]
 ALTITUDE: 70,000 ft.
 VIBRATION: 14 G's
 LEAKAGE: HERMETICALLY SEALED

FEDERAL & MILITARY SPECIFICATIONS:

DESIGN TO: DO-160D, MIL-C-5541, MIL-E-5400, MIL-I-45208A,
 AND MIL-STD-810



SIZE	START FREQ. (MHz)	STOP FREQ. (MHz)	OTHER BANDS
1: 2" SQ.	116, 225, 310, 350,	310, 350, 370, 400,	L: L-Band
1.6: 1.5" SQ.	370, 400, 425, 450,	410, 425, 450, 470,	S: S-Band
2: 2.0" DIA.	470, 500, 620, 990,	500, 532, 620, 990,	C: C-Band
3: 3.5" DIA.	1300, 1500, 1600,	1400, 1650, 1650,	L/S: (1700-2200)MHz
4: MINI ARINC	1700, 1800, 1990,	1750, 1850, 1990,	S: S/C-Band
5: BNC, 53" Rod	2400	2500	

P/N: 9B-700-800-LS-XTT-1-SS78

2. MOUNTING SCREWS ARE SUPPLIED BY ANTCOM CORPORATION
 1. DIMENSIONS IN BRACKETS ARE IN MILLIMETERS [mm]
- NOTES: UNLESS OTHERWISE SPECIFIED:

CABLE LENGTH:	CONNECTOR:	COLOR:
1: 2' SQ.	S: SMA-P PINS	-1: GLOSS WHITE #17925 PER FED-STD-595B
2: 2.0" DIA.	M: MMCX	-2: LUSTERLESS GRAY #36320 PER FED-STD-595B
3: 3.5" DIA.	N: NIN-B, Bthead	-3: OLIVE DRAB GREEN #34031 PER FED-STD-595B
4: LUSTERLESS BLACK #37038 PER FED-STD-595B		-4: LUSTERLESS BLACK #37038 PER FED-STD-595B

QTY	DESCRIPTION	PART NO	SPECIFICATION	MATERIAL	FINISH	REV NO
6	SCREW, MOUNTING	MS24693C273	-	-	-	2
-1	DESCRIPTION	PART NO	SPECIFICATION	MATERIAL	FINISH	REV NO

UNLESS OTHERWISE SPECIFIED DIMENSIONS ARE IN INCHES TOLERANCES ARE: FRACTIONS DECIMALS ANGLES ± 1/64 ± .005 ± .005 ± 1°

REMOVE ALL BURRS BREAK EXTERNAL EDGES .005 TO .010 FILED .005 TO .010 .005 ON A CORNER ± .005 MACHINED SURFACES ± .005

SCALE 1/1

SHEET 1 OF 1

ANTCOM CORP. TORRANCE CALIFORNIA

(700-800) MHz & (1700-2200) MHz UHF/L/S-Band BLADE ANTENNA

DESIGNED BY: Sean Huynh
 APPROVED: July-30-12
 DRAWN: D 3CVE1
 PARTS LIST: 9B-700-800-LS-XTT-1-SS78