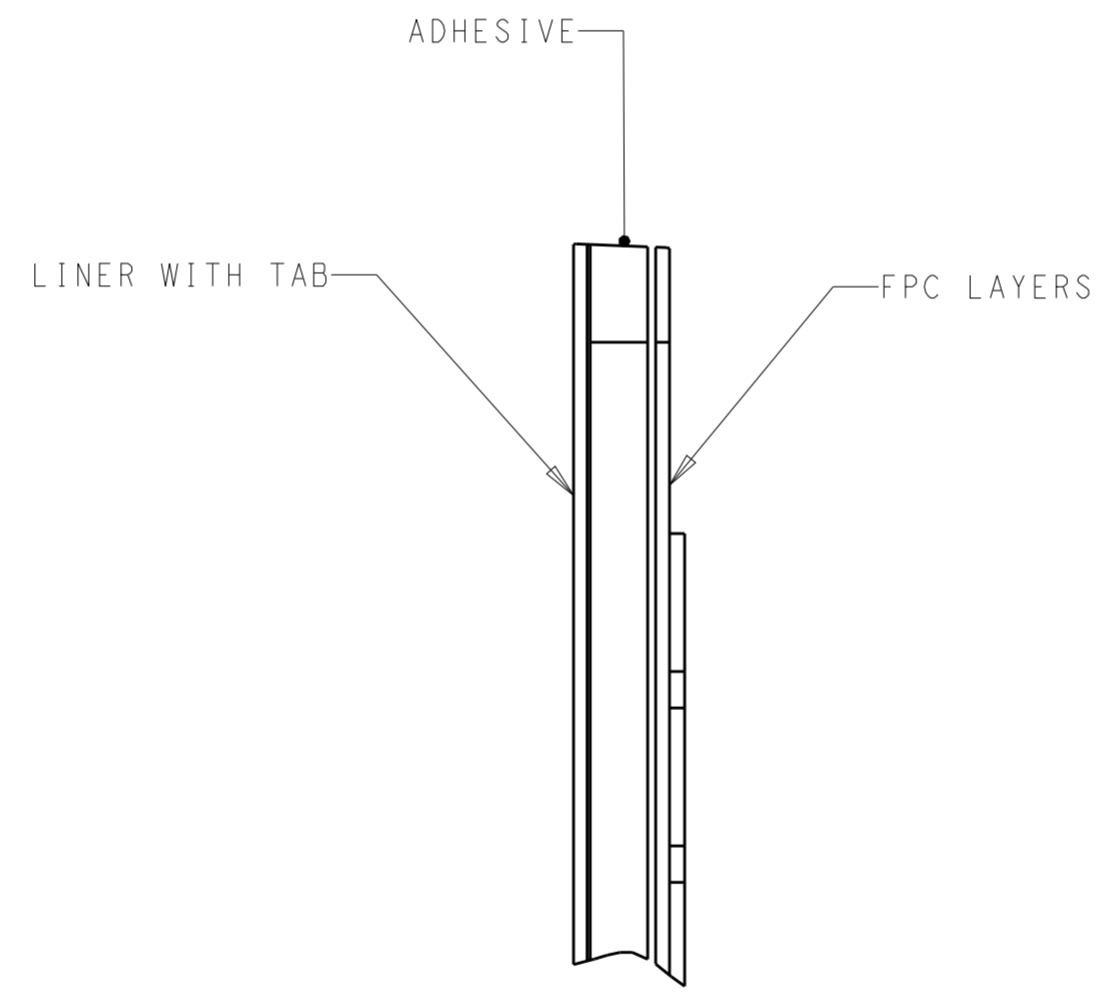
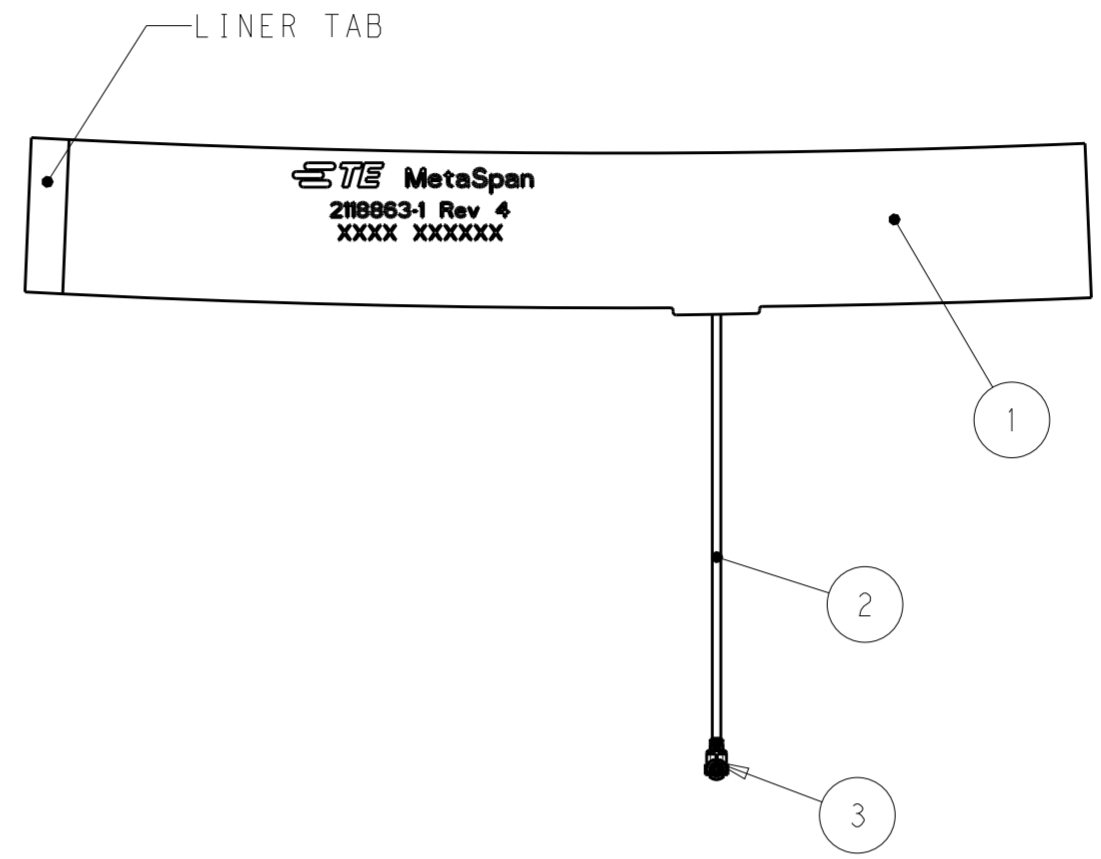
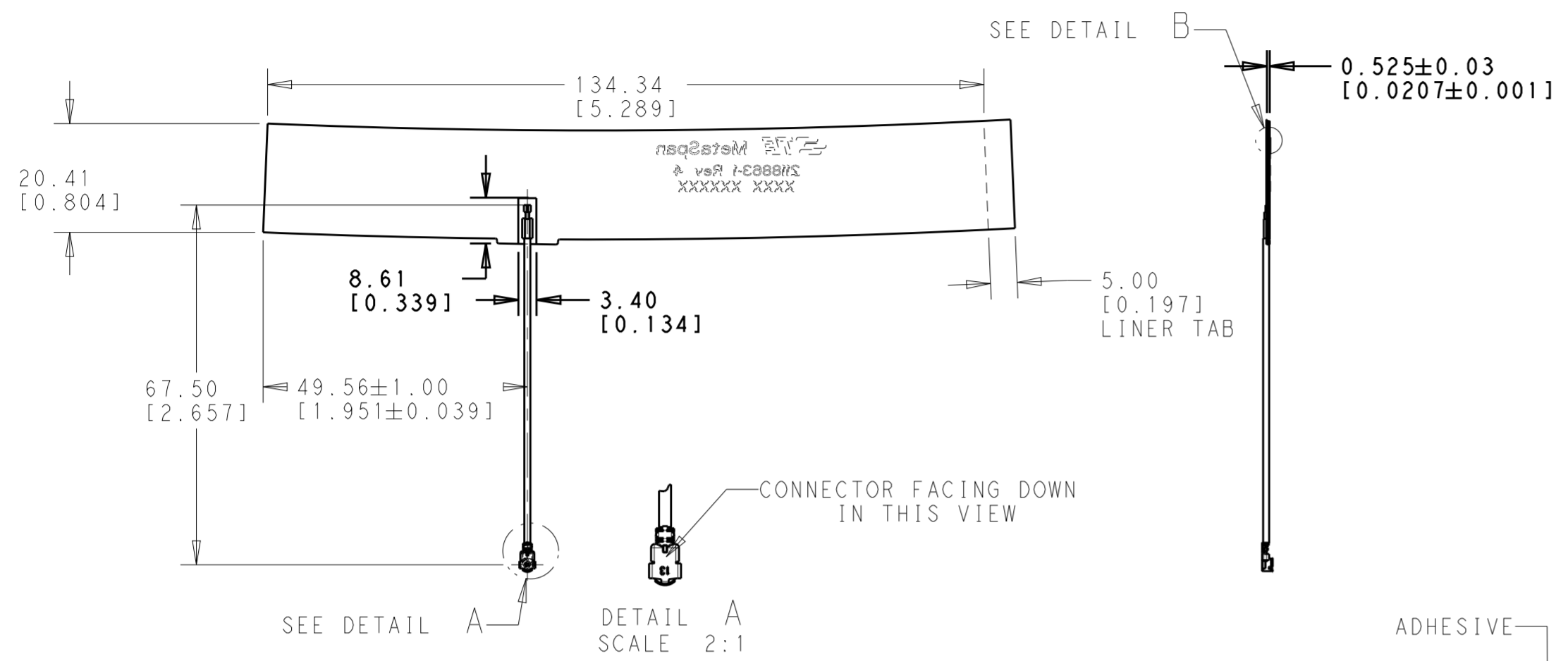


THIS DRAWING IS UNPUBLISHED. RELEASED FOR PUBLICATION 20
 © COPYRIGHT 20 BY - ALL RIGHTS RESERVED.

REVISIONS				
P	LTR	DESCRIPTION	DATE	DWN APVD
2		INITIAL RELEASE	28JUN2018	CR JLM
3		GERBER AND PROFILE UPDATE	23AUG2018	CR JLM
4		GERBERS AND PROFILE UPDATE	17OCT2018	CR JLM



DETAIL B
SCALE 20:1

NOTES: UNLESS OTHERWISE SPECIFIED.

- FABRICATE TO MEET IPC - 6013, CLASS 2. INSPECT TO MEET IPC - A - 600, CLASS 2.
- MATERIAL :
 A. PCB, ONE LAYER 1/2 OZ. COPPER. DIELECTRIC CONSTANT @ 1MHZ 4.2 ± 0.1.
 B. ADHESIVE - 3M VHB 4920 0.4 MM THICKNESS
- FINISH:
 A: SOLDERMASK BOTH SIDES: ORANGE
 B: ENIG PLATING
- PACKAGING: SINGULATED PARTS TO BE SECURELY BAG WRAPPED, BAGGED OR VACUUM PACKED IN BULK
- PRODUCT AND PROCESSING MEET REQUIREMENTS OF TE CONNECTIVITY ENVIRONMENTAL STANDARD TEC-138-702. LOW HALOGEN: CODE2:LOW Br/Cl PER TEC-138-702
- VSWR SPEC: <=2.5:1 FROM 830 - 869 MHZ <=2.5:1 FROM 1.78-2.99 GHZ
- SILKSCREEN; WHITE EPOXY INK
 A. TE LOGO, MetaSpan; TE P/N
 B. WORD REV., FOLLOWED BY THE LATEST REVISION LETTER, AS SHOWN.
 C. 4 DIGIT DATE CODE. FIRST 2 DIGITS FOR THE WEEK CODE AND THE 2ND TWO DIGITS FOR THE YEAR CODE. SPECIFIC TE VENDOR CODE NUMBER DIGITS AS REQUIRED.

QTY	DESCRIPTION	ITEM
1	MHF IPEX 20278-112R-13	3
1	1.13MM DIA; CABLE WHITE	2
1	FPC, ANTENNA	1

PRELIMINARY
NOT RELEASED FOR PRODUCTION

THIS DRAWING IS A CONTROLLED DOCUMENT.		DWN C. REGUS 07JUN2018	TE Connectivity	
DIMENSIONS: mm		CHK C. REGUS 07JUN2018		
TOLERANCES UNLESS OTHERWISE SPECIFIED:		APVD J. MOORE 07JUN2018		
0 PLC ±- 1 PLC ±0.5 2 PLC ±0.13 3 PLC ±0.013 4 PLC ±0.0001 ANGLES ±- FINISH -		NAME METASPAN ANTENNA LTE, CAT M1 SIZE CAGE CODE DRAWING NO RESTRICTED TO A200779 C-2118863 -		
MATERIAL		PRODUCT SPEC -	CUSTOMER DRAWING	
		APPLICATION SPEC -	SCALE 1:1 SHEET 1 OF 1 REV 4	
		WEIGHT -		