

# Exhibit 2

## GPS Re-Radiator Locations for SRC Campus Locations

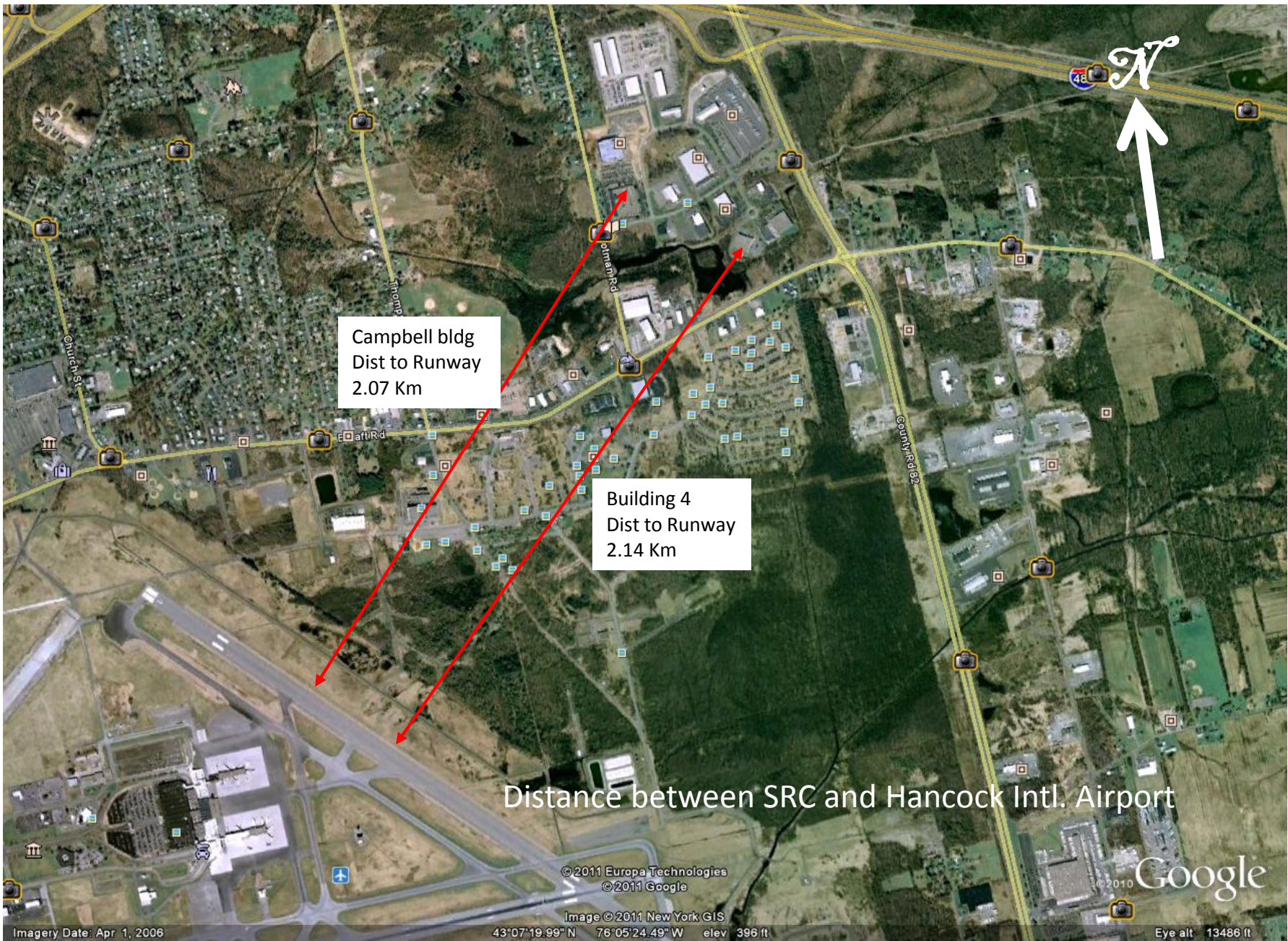
FCC File Number: 0504-EX-CN-2019

# SRC Locations Requiring GPS Re-radiators

- Syracuse N.Y.
  - Building 2
  - Building 4
- Chantilly VA
  - Main building
- San Antonio TX

# SRC GPS Re-Radiator Roof top Antenna Locations in Syracuse, N.Y.

- Campbell Building
  - Lat: 43° 7'51.95"N
  - Long: 76° 5'21.29"W
  - AMSL: 401 Ft Elevation
- Building 4
  - Lat: 43° 7'43.66"N
  - Long: 76° 5'2.52"W
  - AMSL: 395 Ft Elevation



Campbell bldg  
Dist to Runway  
2.07 Km

Building 4  
Dist to Runway  
2.14 Km

Distance between SRC and Hancock Intl. Airport

©2011 Europa Technologies  
©2011 Google

Image ©2011 New York GIS

©2010 Google

Imagery Date: Apr 1, 2006

43°07'19.99" N 76°05'24.49" W elev 396 ft

Eye alt 13486 ft



Campbell Building  
43° 7'51.95"N  
76° 5'21.29"W  
401 Ft Elevation

.48 Km

Building 4  
43° 7'43.66"N  
76° 5'2.52"W  
395 Ft Elevation

Separation Distance between SRC Buildings

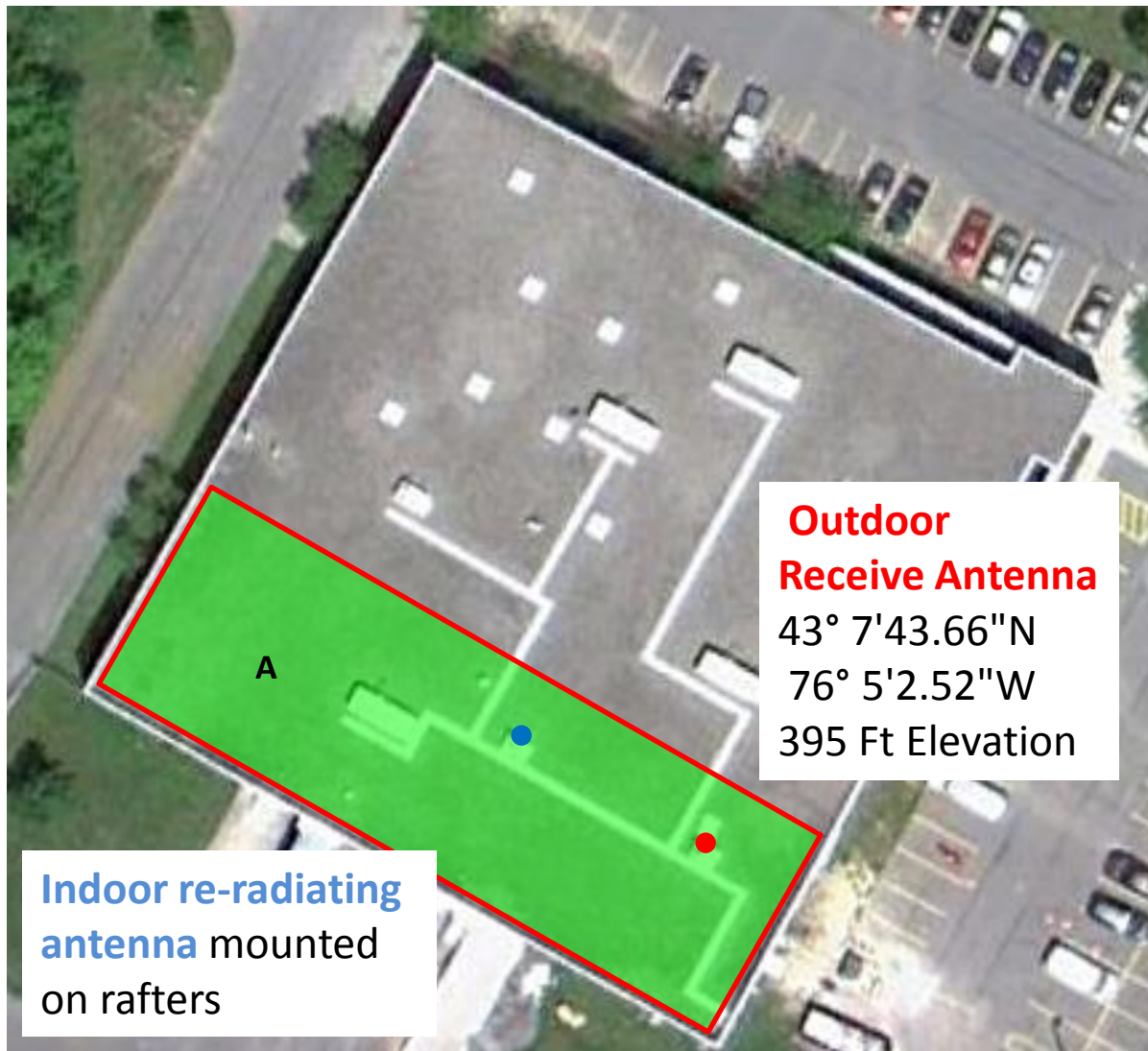
# Location for Receive Antenna on Campbell Facility



- Key**
- Indoor GPS Service Areas
  - GPS Receive Antenna
  - Indoor GPS Re-radiating Antenna

This side of the building facing Syracuse Intl. Airport

# Surveyed Location for Receive Antenna on Building 4 Facility



- Key**
- Indoor GPS Service Areas
  - GPS Receive Antenna
  - Indoor GPS Re-radiating Antenna

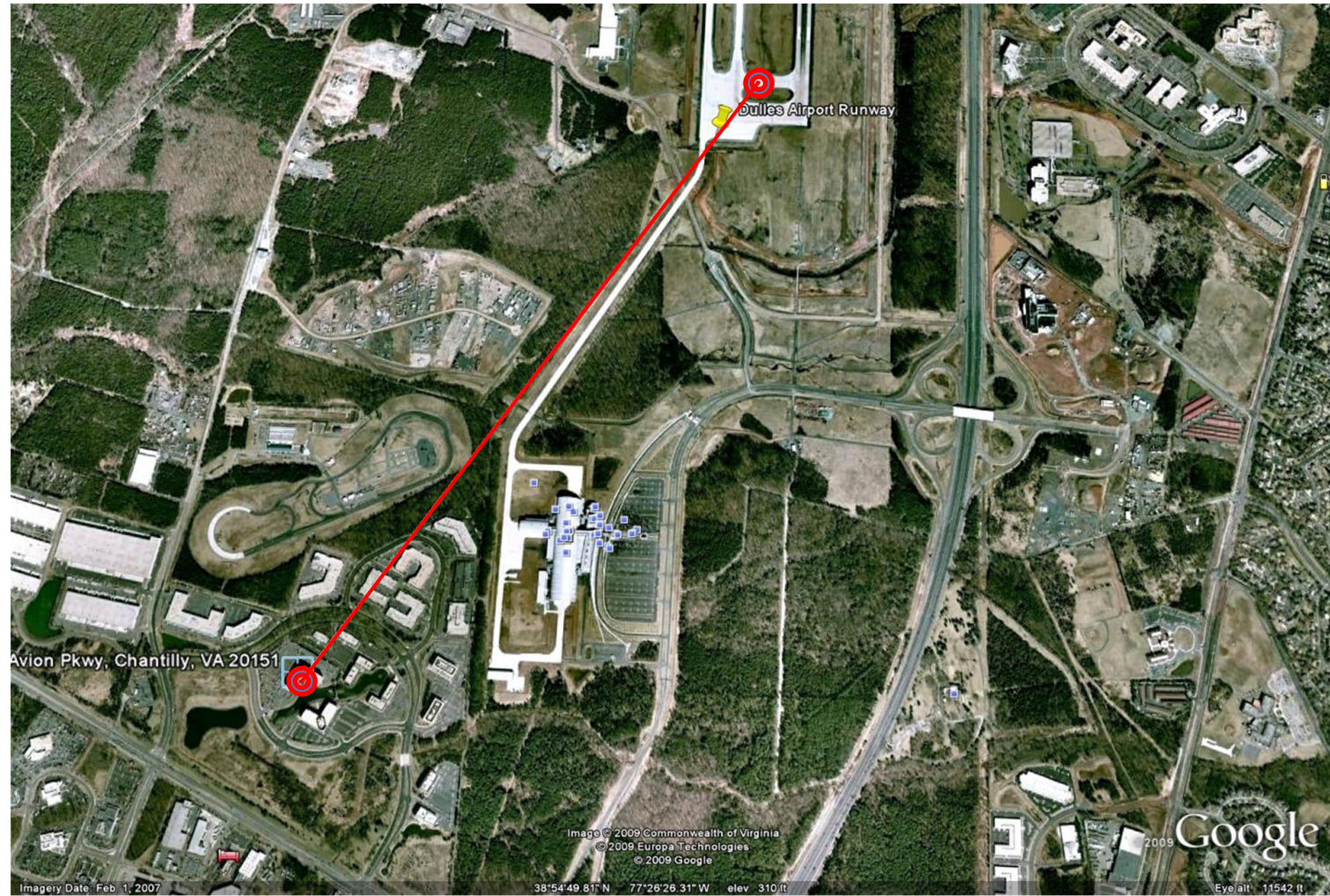
This side of the building facing Syracuse Intl. Airport

# SRC Chantilly VA GPS Re-Radiator Roof top Antenna Location

- SRC Chantilly, VA
  - Lat: 38°54'26.00"N
  - Long: 77°27'11.00"W
  - AMSL: 328 Ft Elevation



## SRC Inc., Chantilly Virginia






**Line of sight distance to Dulles Airport Runway: 2.37km**

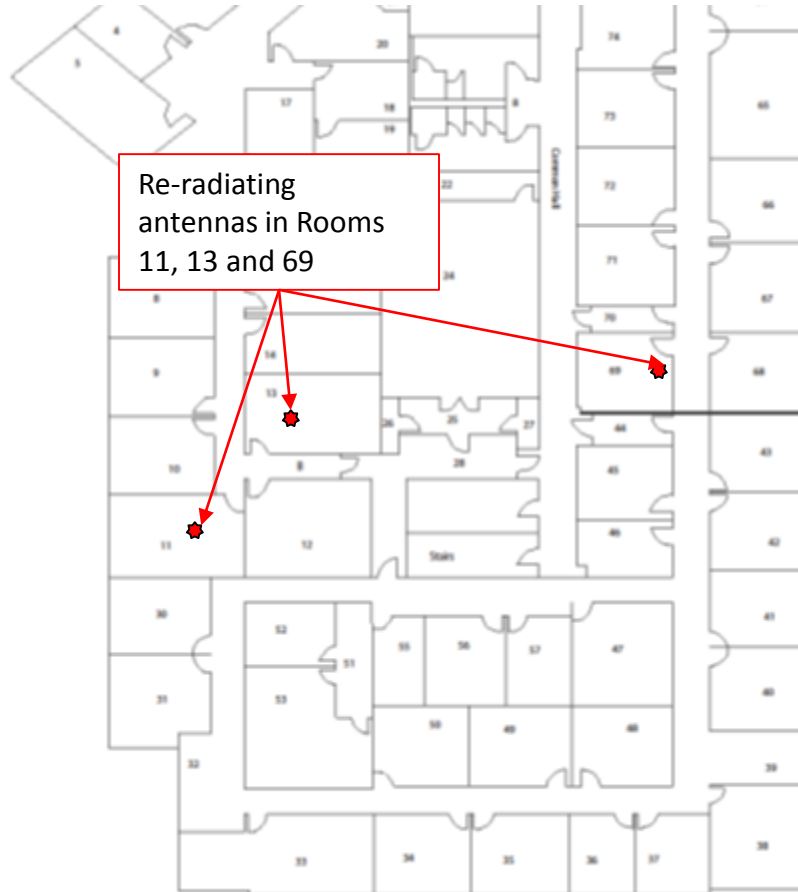
## SRC Inc., Chantilly Virginia



### Key

-  Indoor GPS Service Areas
-  GPS Receive Antenna
-  Indoor GPS Re-radiating Antenna

## SRC Inc., Chantilly Virginia



This side of the building facing Dulles Airport

14685 Avion Parkway, Suite 410  
Chantilly, VA 20151, 4<sup>th</sup> floor

# SRC San Antonio TX GPS Re-Radiator Roof top Antenna Location

- SRC Chantilly, VA
  - Lat: 38°54'26.00"N
  - Long: 77°27'11.00"W
  - AMSL: 401 Ft Elevation