

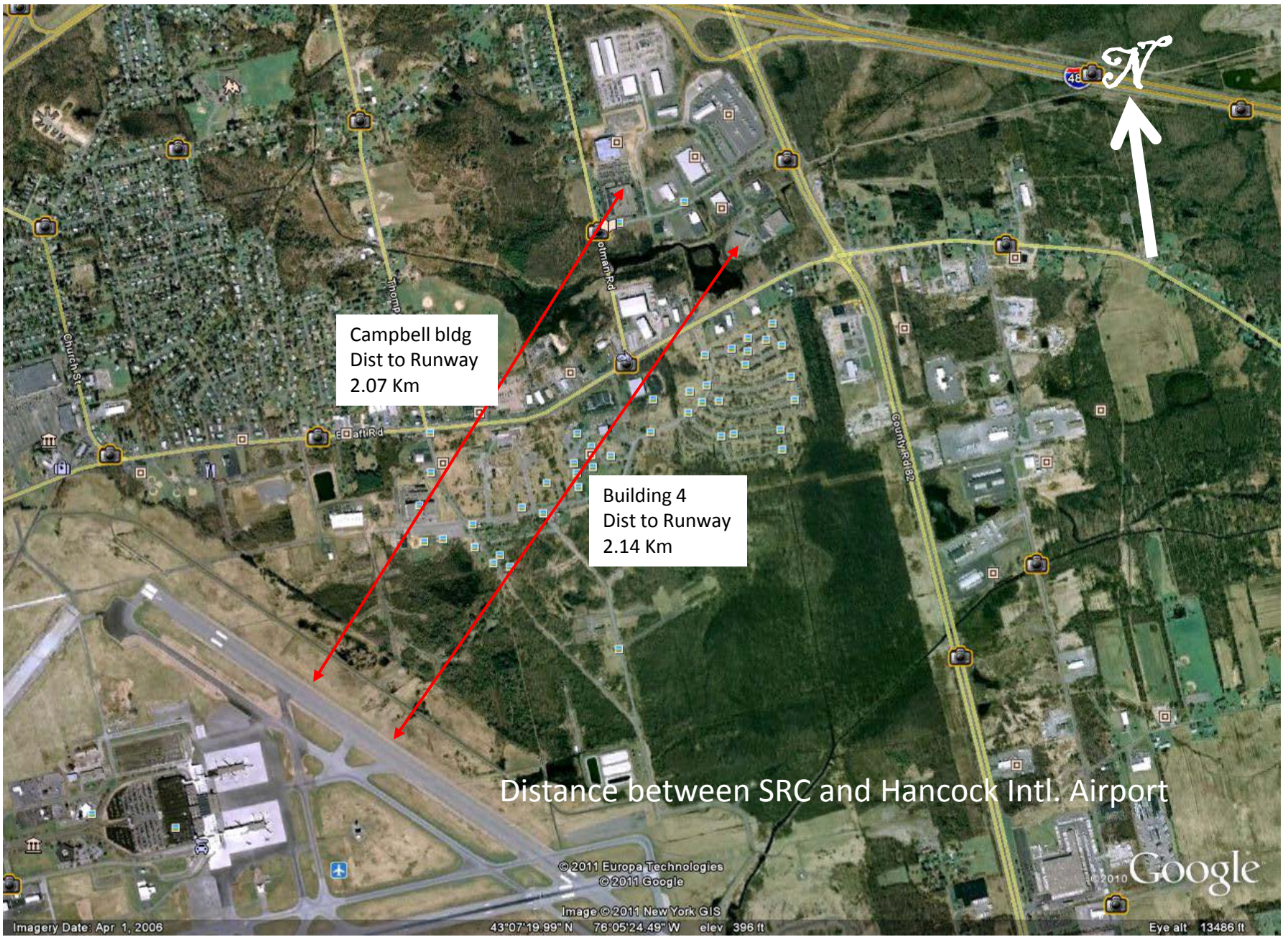
Exhibit 2

GPS Re-Radiator Locations for SRC Campus to be added to Existing WF2XIH SRC License

FCC File Number:

SRC GPS Re-Radiator Roof top Antenna Locations

- Campbell Building
 - Lat: 43° 7'51.95"N
 - Long: 76° 5'21.29"W
 - AMSL: 401 Ft Elevation
- Building 4
 - Lat: 43° 7'43.66"N
 - Long: 76° 5'2.52"W
 - AMSL: 395 Ft Elevation



Campbell bldg
Dist to Runway
2.07 Km

Building 4
Dist to Runway
2.14 Km

Distance between SRC and Hancock Intl. Airport

© 2011 Europa Technologies
© 2011 Google

Image © 2011 New York GIS

43°07'19.99" N 76°05'24.49" W elev 396 ft

© 2010 Google

Eye alt 13486 ft

Imagery Date: Apr 1, 2006



Campbell Building
43° 7'51.95"N
76° 5'21.29"W
401 Ft Elevation

.48 Km

Building 4
43° 7'43.66"N
76° 5'2.52"W
395 Ft Elevation

Separation Distance between SRC Buildings

© 2011 Europa Technologies
© 2011 Google

Image © 2011 New York GIS

43°07'45.90" N 76°05'11.95" W elev 394 ft

Google

©2010

Eye alt 2390 ft

Location for Receive Antenna on Campbell Facility



Indoor re-radiating antennas mounted in ceiling above Room A, B, and C

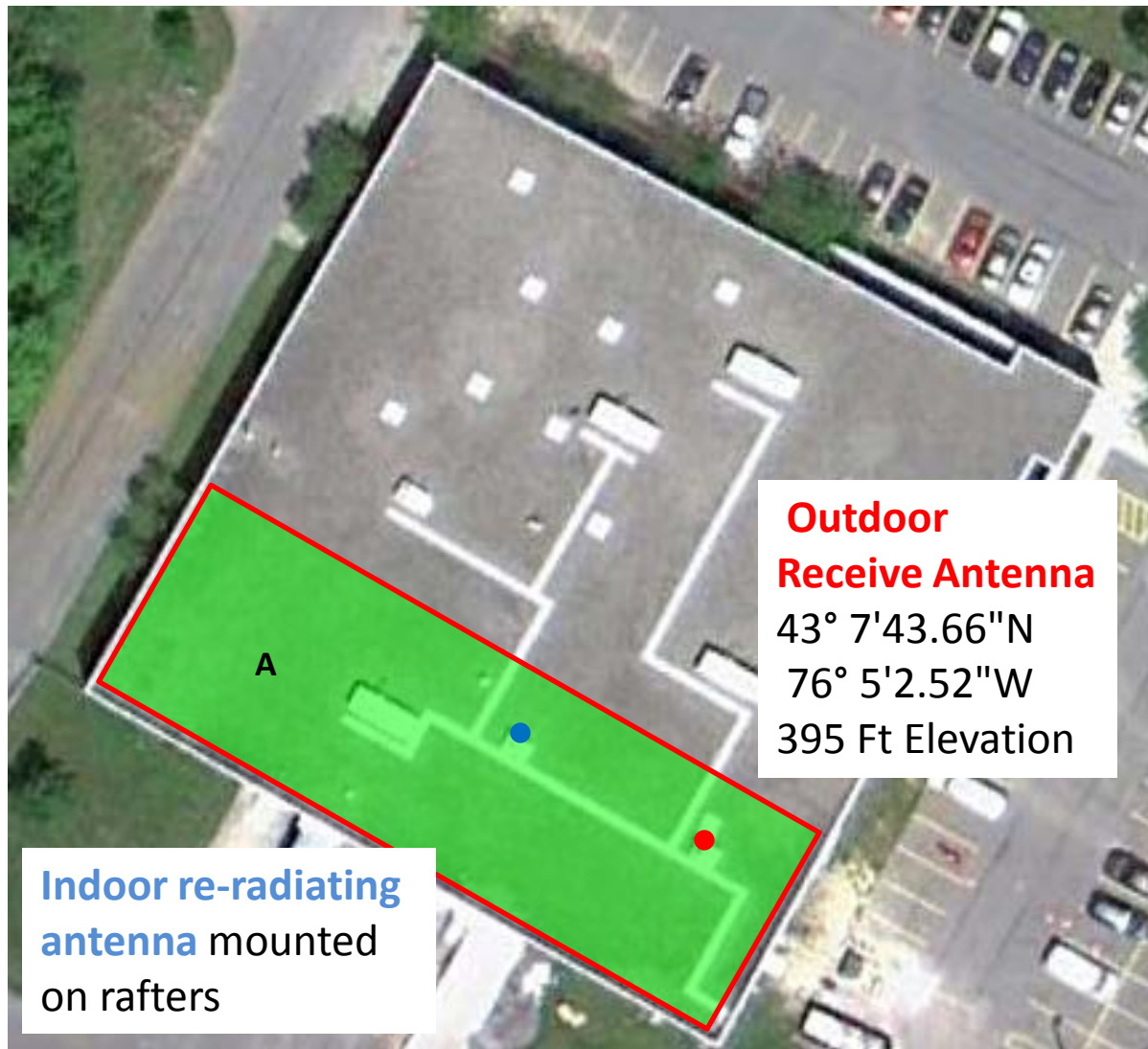
Outdoor Receive Antenna
43° 7'51.95"N
76° 5'21.29"W
401 Ft Elevation



- Key**
- Indoor GPS Service Areas
 - GPS Receive Antenna
 - Indoor GPS Re-radiating Antenna

This side of the building facing Syracuse Intl. Airport

Surveyed Location for Receive Antenna on Building 4 Facility



- Key**
- Indoor GPS Service Areas
 - GPS Receive Antenna
 - Indoor GPS Re-radiating Antenna

This side of the building facing Syracuse Intl. Airport