



22 Oct 2020

Introduction

SOLiD (<https://www.solid.com>) enables indoor and outdoor cellular and public-safety communications at many of the world’s best-known and most challenging venues. From the busiest airports and subways to Fortune 500 corporate buildings, hospitals, hotels, and universities, professional and college sports venues, government, industrial and logistics facilities, SOLiD’s modular solutions scale to every challenge. SOLiD continuously innovates to deliver best in class solutions with ALLIANCE 5G DAS, RocketWAVE mmWave repeaters, Infinity Access optical fronthaul and backhaul, and SURF Open RAN (O-RAN) networks.

Testing to be Performed

SOLiD’s research and development teams have been advancing new radio designs and technologies for the cutting-edge wireless devices. An Experimental License is requested for testing and demonstrations.

Units: 2 units (28 GHz)

Stop buzzer contact: adam.chin@solid.com
Adam Chin
503-207-8020

Proposed Transmitter & Antenna Parameters

| Details | | | | | Transmitter Emission | | | | | |
|---|--------------|---|---|------------|----------------------|--------------------|----------------|-----------------|-------------------|-------------------------------|
| Location | Station Type | Latitude | Longitude | AGL Meters | Antenna Type | Antenna Gain (dBi) | Max EIRP (dBm) | Frequency (GHz) | Bandwidth (MHz) | Emission Designator MW7D |
| 1. Euless, TX 2. Irvine, CA 3. Las Vegas, NV 4. Bellevue, WA | MO | 1. 32°51'02.9"N 2. 33°40'08.2"N 3. 36°06'50.8"N 4. See below | 1. 97°04'12.9"W 2. 117°46'12.5"W 3. 115°10'03.4"W 4. See below | NTE 25 | Patch | 23 | 40 | 27.5-28.35 | 100 200 400 | 100MW7D 200MW7D 400MW7D |

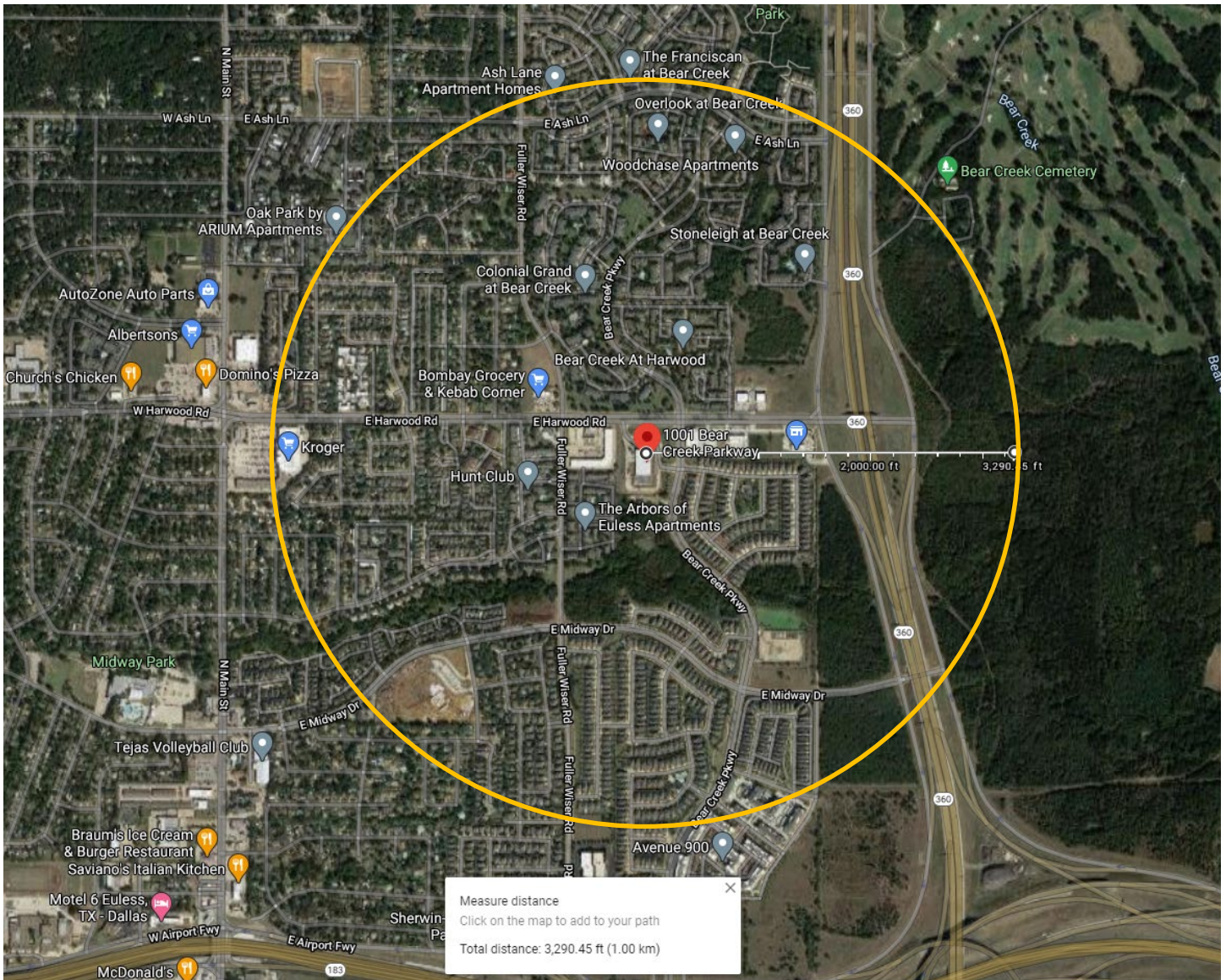
SOLiD Gear Inc.
800 Klein Rd, Ste 200
Plano, TX 75074

Location 1:

1001 Bear Creek Pkwy, Euless, TX 76039

Center point:

32°51'02.9"N, 97°04'12.9"W, radius = 1 kilometer



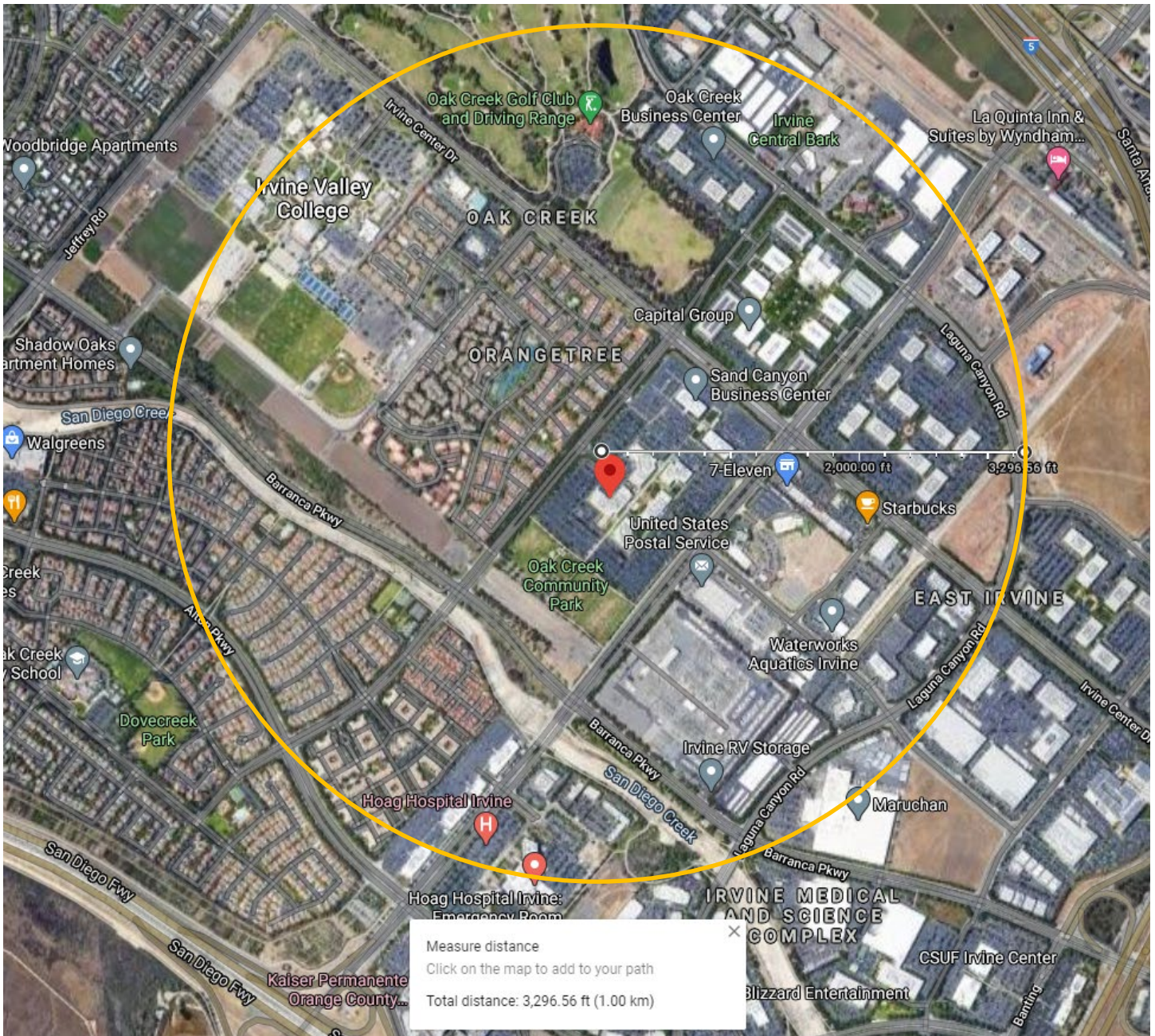
SOLiD Gear Inc.
800 Klein Rd, Ste 200
Plano, TX 75074

Location 2:

15505 Sand Canyon Ave, Irvine, CA 92618

Center point:

33°40'08.2"N, 117°46'12.5"W, radius = 1 kilometer



SOLiD Gear Inc.

800 Klein Rd, Ste 200

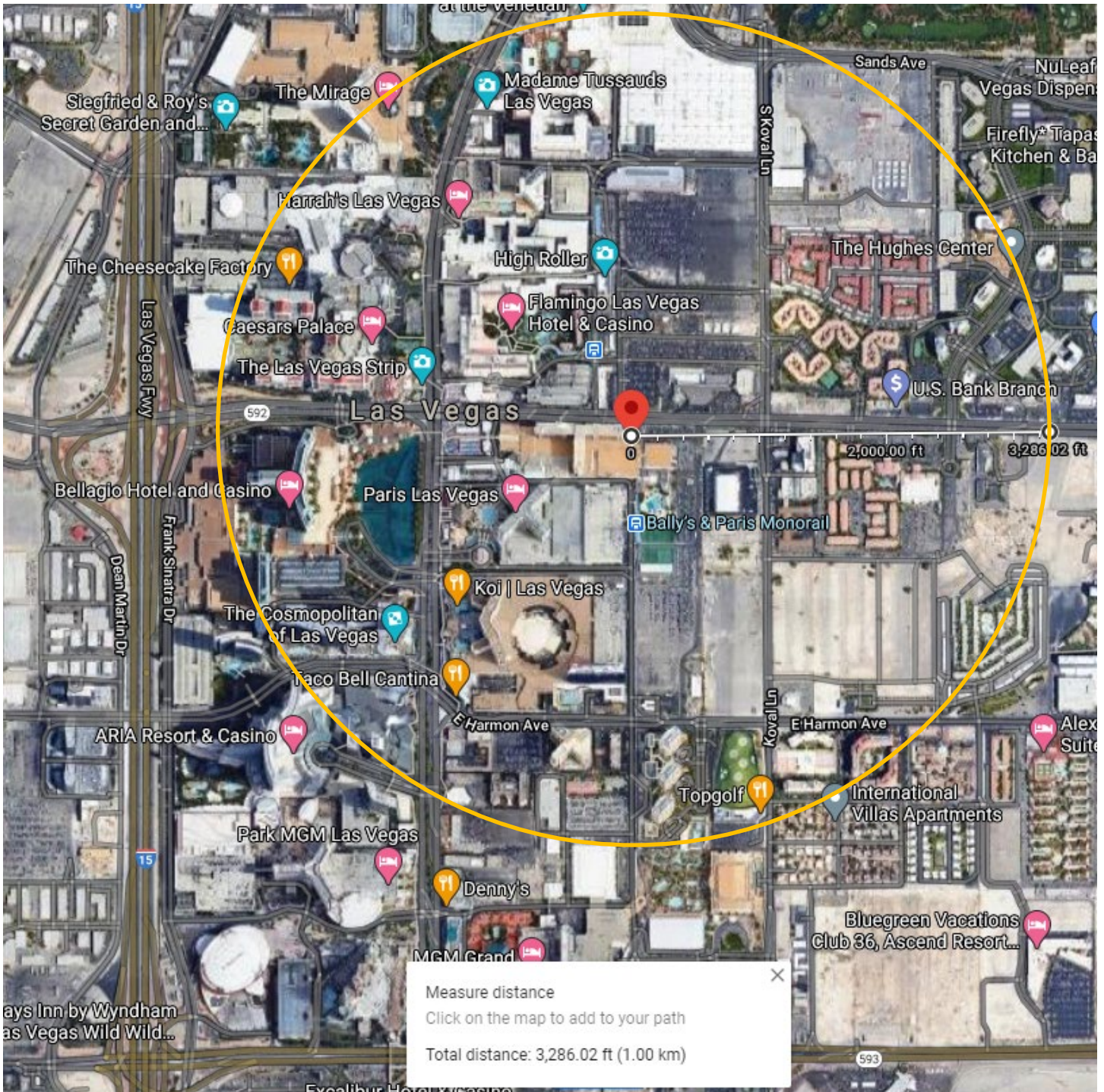
Plano, TX 75074

Location 3:

3645 S Las Vegas Blvd, Las Vegas, NV 89109

Center point:

36°06'50.8"N, 115°10'03.4"W, radius = 1 kilometer



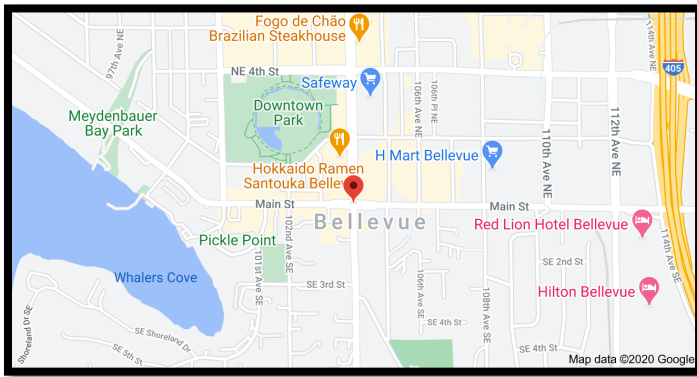
SOLID Gear Inc.

800 Klein Rd, Ste 200

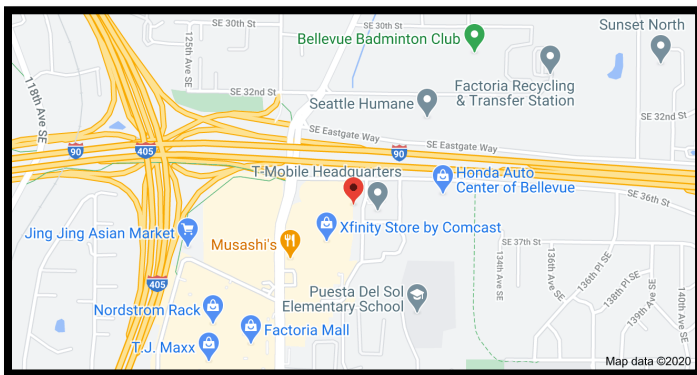
Plano, TX 75074

Location 4:

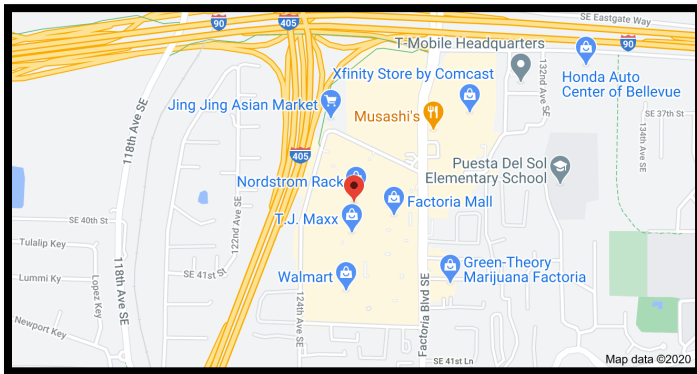
| Test | Name | gNB | Repeater | Notes |
|------|--------------|---|--|---|
| 1 | Greggs Cycle | 105 Bellevue Way NE, Bellevue, WA 98004 | 10395-10399 Main St, Bellevue, WA 98004 | Approx. location, proposed test location spans 2 blocks) |
| 2 | TMO HQ#1 | 3655 131st Ave SE, Bellevue, Washington 98006 | Five Newport, 12920 SE 38th St, Bellevue, WA 98006 | Approx. location the repeater will be on a parking garage associated with the Five Newport building |
| 3 | TMO HQ#2 | 3655 131st Ave SE, Bellevue, Washington 98006 | 3920 124th Ave SE, Bellevue, WA 98006 | Approx. location as the repeater will be set up in a parking lot at the Nordstrom Rack |



1-



2-



3-

SOLiD Gear Inc.
800 Klein Rd, Ste 200
Plano, TX 75074