

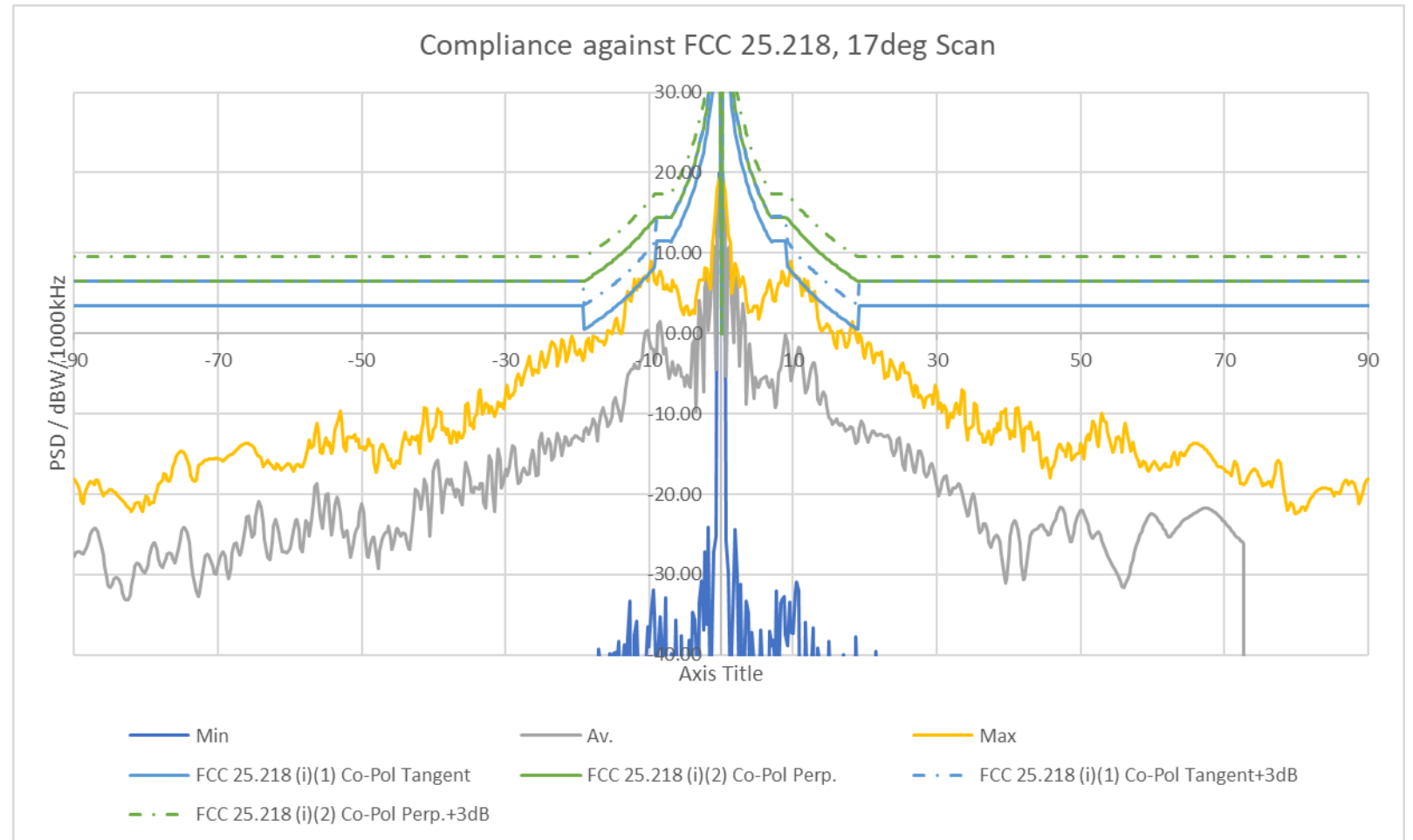


TB2 MEO Beam Compliance - APG

June 11th, 2021

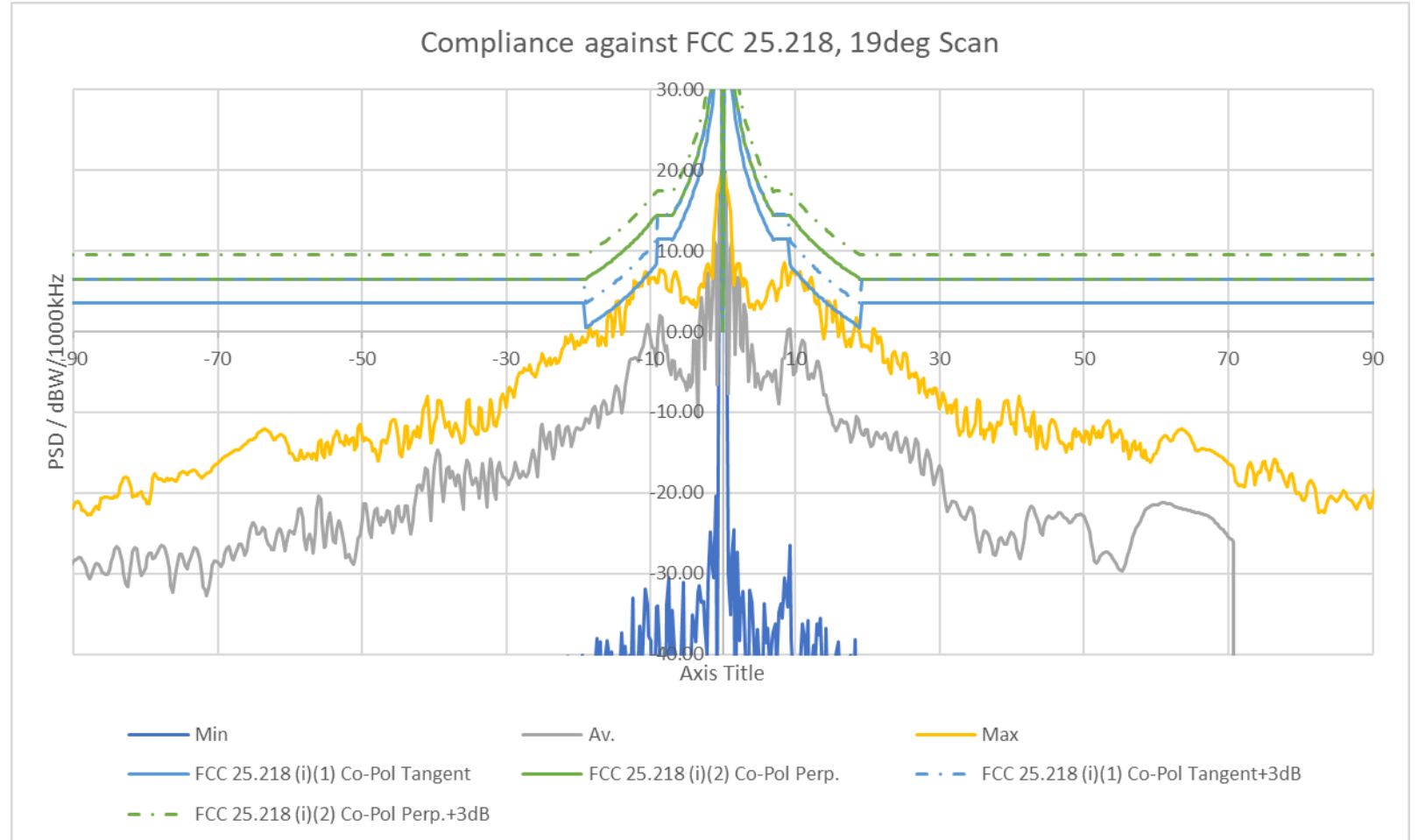
Compliance against FCC 25.218, MEO Arc from APG, 30Deg Tilt

- FCC25.218 is not appropriate req. – beam is not pointed to GEO Arc.
- At Max EIRP, 40 MHz Bandwidth
- Simulated Data
- Terminal tilted 30degrees towards MEO Arc (as intended for test scenario)
- Min, Average and Max are across Phi/Skew
- Theta Range: 16 - 33
- Phi Range: -40 -> 60



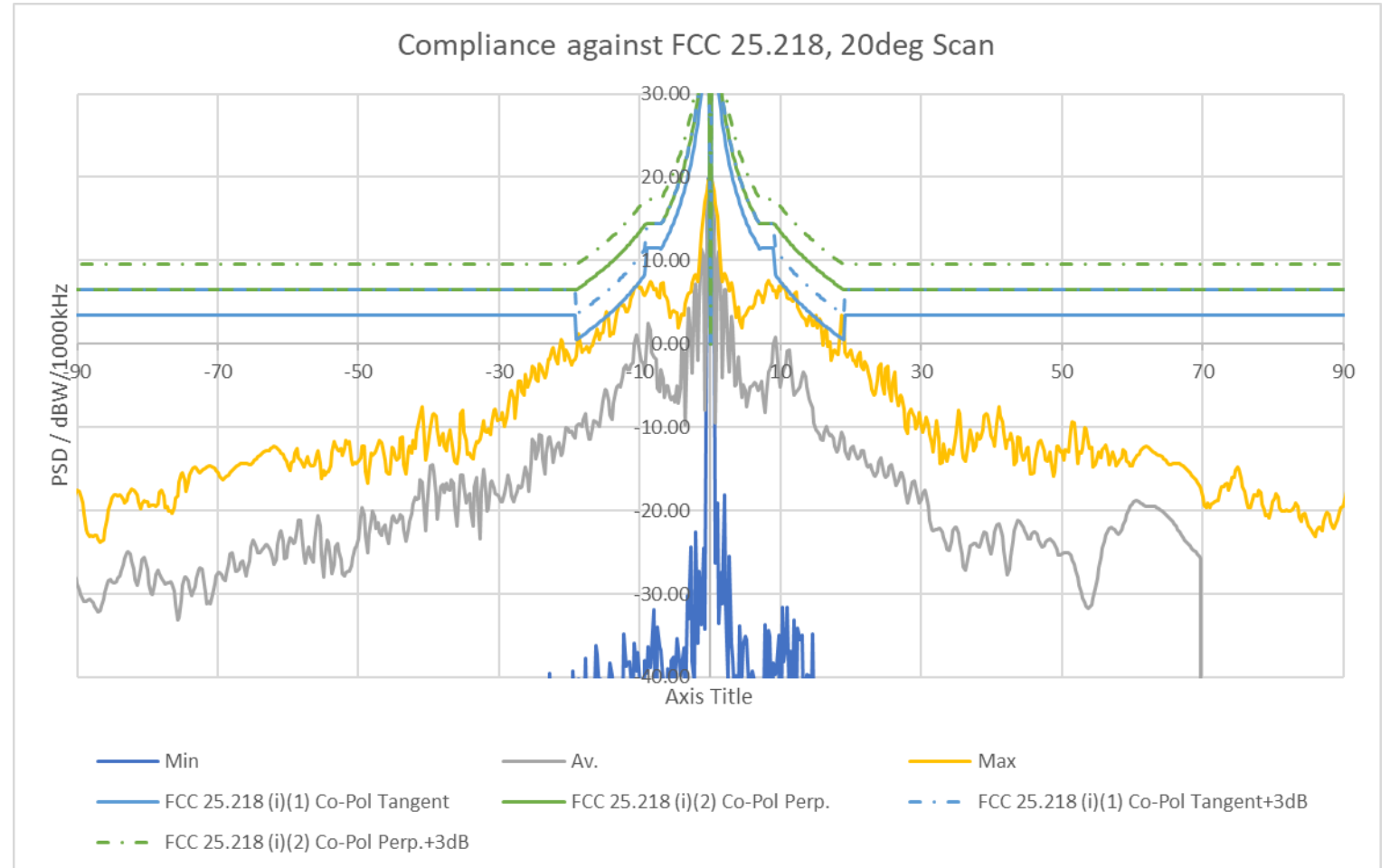
Compliance against FCC 25.218, MEO Arc from APG, 30Deg Tilt

- FCC25.218 is not appropriate req. – beam is not pointed to GEO Arc.
- At Max EIRP, 40 MHz Bandwidth
- Simulated Data
- Terminal tilted 30degrees towards MEO Arc (as intended for test scenario)
- Min, Average and Max are across Phi/Skew
- Theta Range: 16 - 33
- Phi Range: -40 -> 60



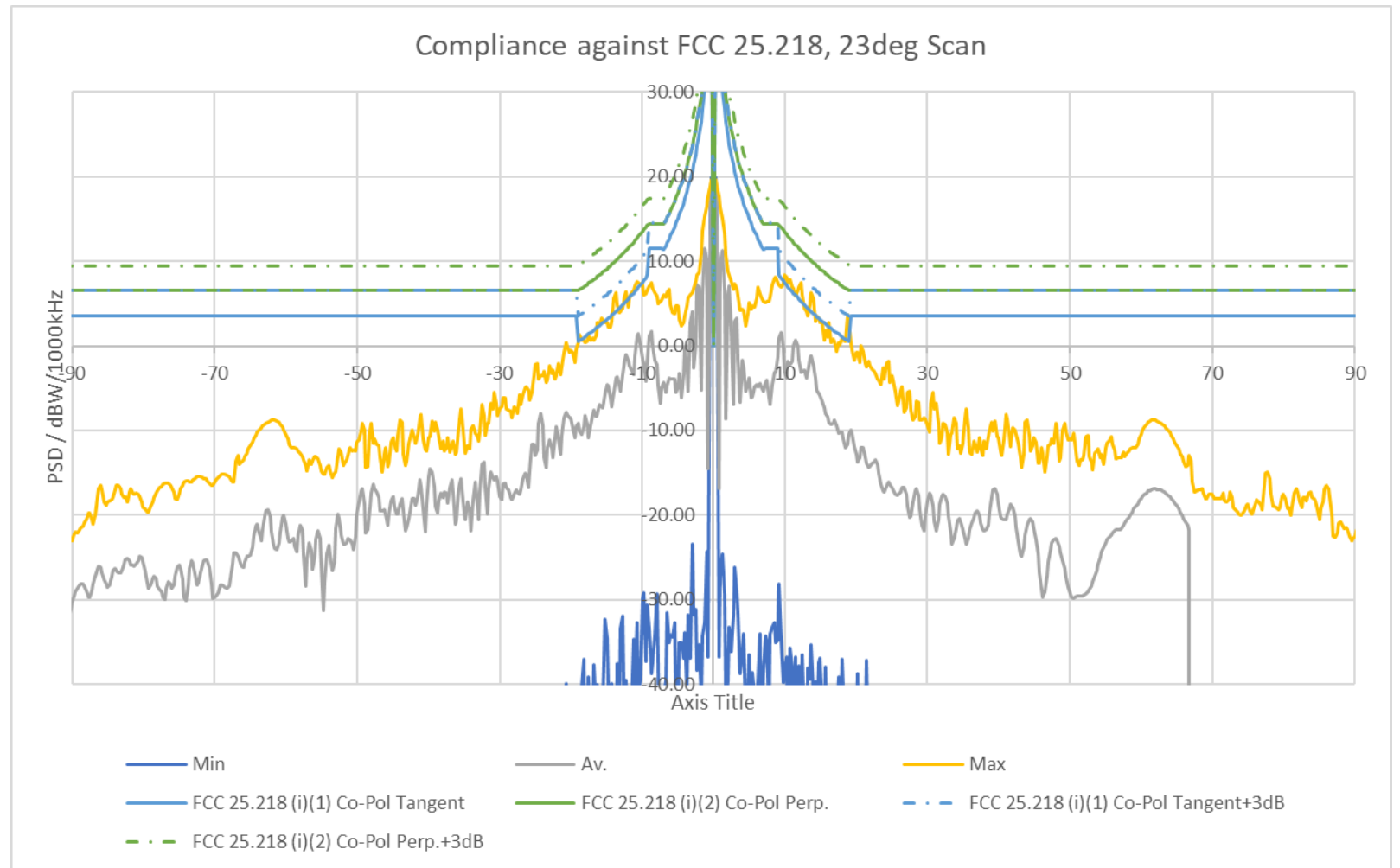
Compliance against FCC 25.218, MEO Arc from APG, 30Deg Tilt

- FCC25.218 is not appropriate req. – beam is not pointed to GEO Arc.
- At Max EIRP, 40 MHz Bandwidth
- Simulated Data
- Terminal tilted 30degrees towards MEO Arc (as intended for test scenario)
- Min, Average and Max are across Phi/Skew
- Theta Range: 16 - 33
- Phi Range: -40 -> 60



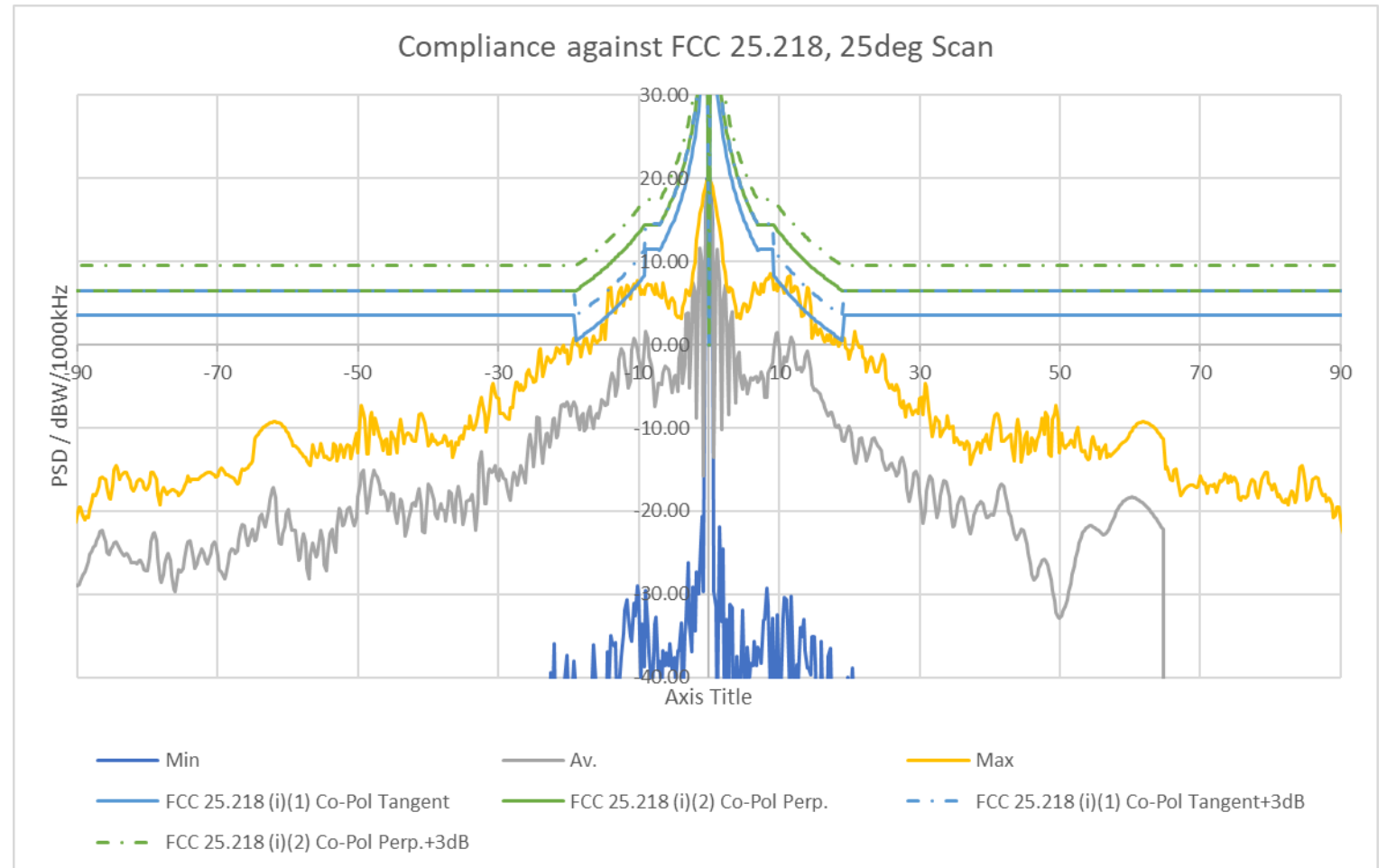
Compliance against FCC 25.218, MEO Arc from APG, 30Deg Tilt

- FCC25.218 is not appropriate req. – beam is not pointed to GEO Arc.
- At Max EIRP, 40 MHz Bandwidth
- Simulated Data
- Terminal tilted 30degrees towards MEO Arc (as intended for test scenario)
- Min, Average and Max are across Phi/Skew
- Theta Range: 16 - 33
- Phi Range: -40 -> 60



Compliance against FCC 25.218, MEO Arc from APG, 30Deg Tilt

- FCC25.218 is not appropriate req. – beam is not pointed to GEO Arc.
- At Max EIRP, 40 MHz Bandwidth
- Simulated Data
- Terminal tilted 30degrees towards MEO Arc (as intended for test scenario)
- Min, Average and Max are across Phi/Skew
- Theta Range: 16 - 33
- Phi Range: -40 -> 60



Compliance against FCC 25.218, MEO Arc from APG, 30Deg Tilt

- FCC25.218 is not appropriate req. – beam is not pointed to GEO Arc.
- At Max EIRP, 40 MHz Bandwidth
- Simulated Data
- Terminal tilted 30degrees towards MEO Arc (as intended for test scenario)
- Min, Average and Max are across Phi/Skew
- Theta Range: 16 - 33
- Phi Range: -40 -> 60

