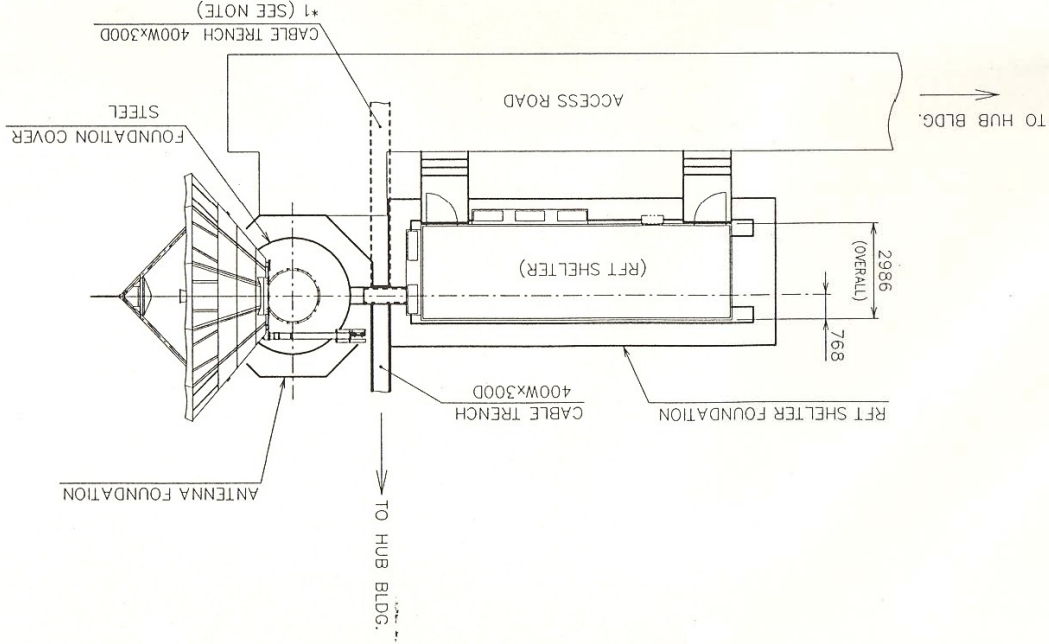
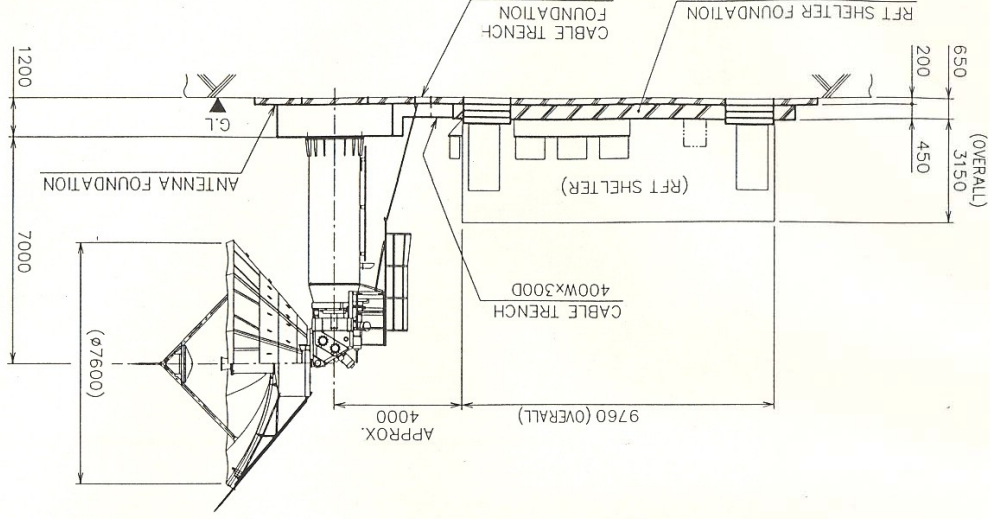


App.	<i>K.P.L.</i>
CHKD.	<i>K.P.L.</i>
ENG.	<i>D. McKeown</i>
SCALE	NTS

SS	DESCRIPTION	DATE	BY
1	20 AUG.1997		
2	25 AUG.1997		
3	ADDED THE WORD "OVER WALLS". MODIFIED	28 SEP.1998	
4	CHANGED OVER WALLS into OVERALL. <i>D. McKeown</i>	11 NOV.1998	
	AS-BUILT	28 SEP.1998	
	AS-BUILT	11 NOV.1998	
	AS-BUILT	11 NOV.1998	

NOTE
*1. FOR RFT NOS.1 AND 2, THE IFL CABLE TRENCH SHOULD BE ROUTED AS SHOWN BY DOT LINES.



USA-SLN-M002
7.6m ANTENNA
AND RFT SHELTER LAYOUT
U.S.A.
ICO SAN

LEGEND
▲ G.L. : GROUND LEVEL
UNIT : mm