

EXHIBIT I

By this application, Satellite CD Radio, Inc. (CD Radio), will begin testing of S-Band terrestrial repeater ground stations for its satellite Digital Audio Radio Service (DARS) system. The overall purpose of the requested experimentation is to *finalize the engineering of CD Radio's terrestrial repeaters*. CD Radio expects that this effort will yield significant new information about power levels required to ensure satellite DARS reception in urban "canyons" and near other obstacles, and will permit as well measurement of out-of-band emissions from such terrestrial stations.

Specifically, CD Radio plans:

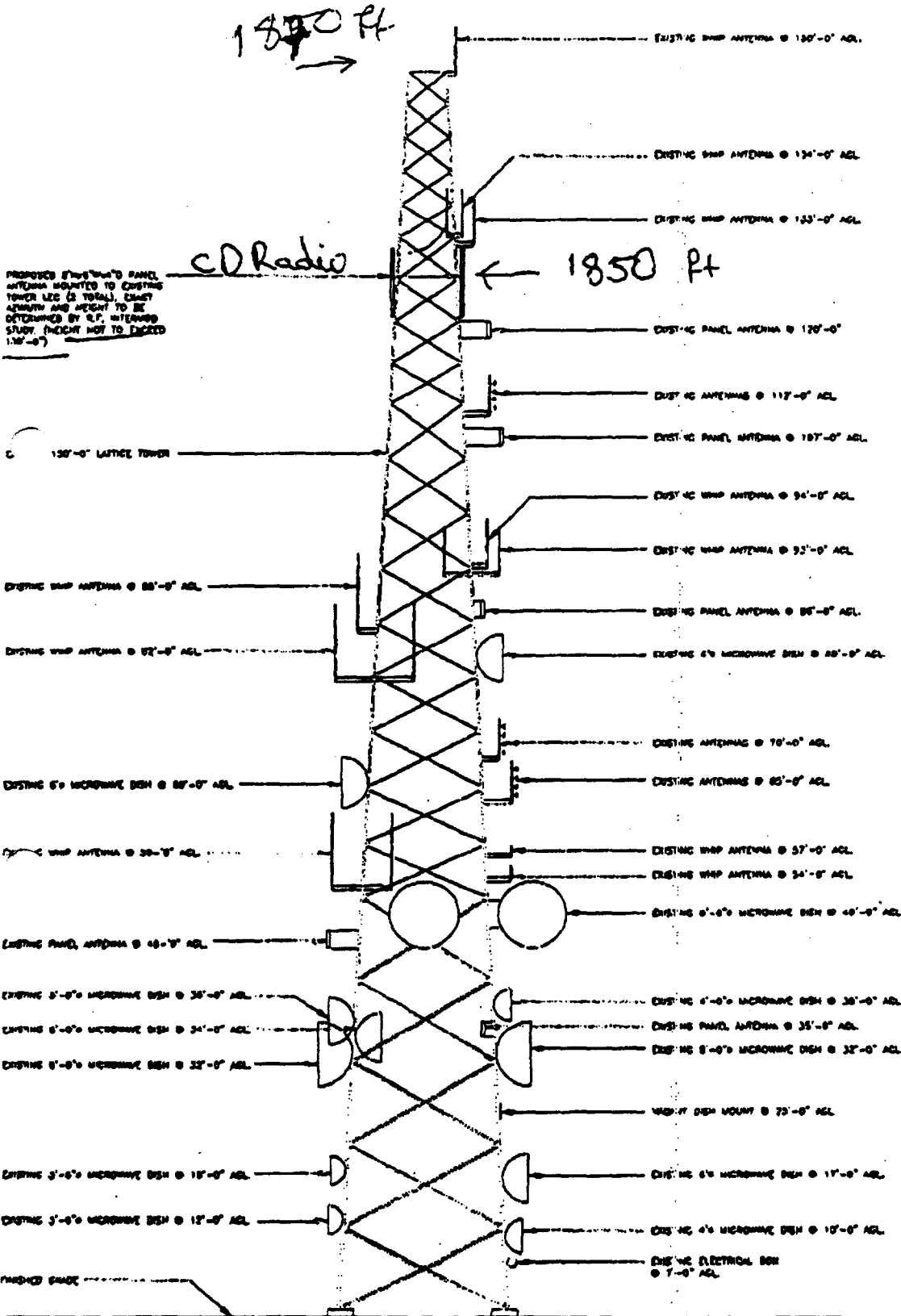
1. To measure objective (e.g., signal strength, delay speed, multipath, etc.) and subjective (e.g., music quality) transmission performance using parameter values of operational system.
 - a) Measurements at S-band in CD Radio's licensed spectrum. No confirming measurements of terrestrial transmission performance for Satellite DARS have yet been made.
 - b) Measurements in a severe urban environment. San Francisco is a particularly difficult propagation environment and, additionally, has subenvironments (e.g., hilly terrain, water boundary, treed areas, etc.)
 - c) Measurements in the projected Satellite DARS environment using transmitter sites suitable for the operational system with objective and subjective performance measured in a moving vehicle.

3. To optimize transmission parameter values particularly transmitter power and modulation.
 - a) Various power levels of the transmitters will be used with a maximum of 1000 watts

- b) Modulation optimization will be checked, especially number of subcarriers, their spacing and symbol guard time. Performance under doppler conditions will also be confirmed.
- c) Out-of-band emissions and spectral occupancy will be measured, including sidelobe regrowth due to transmitter non-linearity.

EXHIBIT II

No AVIATION LIGHTS Grizzly Peak



AGL = 1720 Ft.

TOWER ELEVATION

1

CD Radio Inc.
 1180 Avenue of Americas, 14th Floor
 New York, NY 10036
 TEL: (212) 899-5000
 FAX: (212) 899-4060

CONSULTANT:
WFI
 Wireless Facilities Inc.
 San Diego Tech Center
 9725 Saratoga Road, Suite 140
 San Diego, CA 92121
 Tel: (619) 824-2929
 Fax: (619) 824-2928

PROJECT INFORMATION:
GRIZZLEY PEAK
 APN 267-010-003-7
 GRIZZLEY PEAK BLVD.
 BERKELEY, CA
 ALAMEDA COUNTY

CURRENT ISSUE DATE:
 8/14/98

ISSUED FOR:
 EXHIBIT "B"

REV.	DATE	DESCRIPTION	BY
1	8/14/98	ISSUED FOR EXHIBIT "B"	JM

PLANS PREPARED BY:
DELTA GROUPS ENGINEERING, INC.
 CONSULTING ENGINEERS
 2895 STONEMORE DRIVE, SUITE 119
 PLEASANTON, CA 94588
 TEL 925-468-8113 FAX 925-468-0355

DRAWN BY: JM CHK: APV:

LICENSURE:

SHEET TITLE:
 TOWER ELEVATION

SHEET NUMBER: **A2** REVISION: 1
 988203