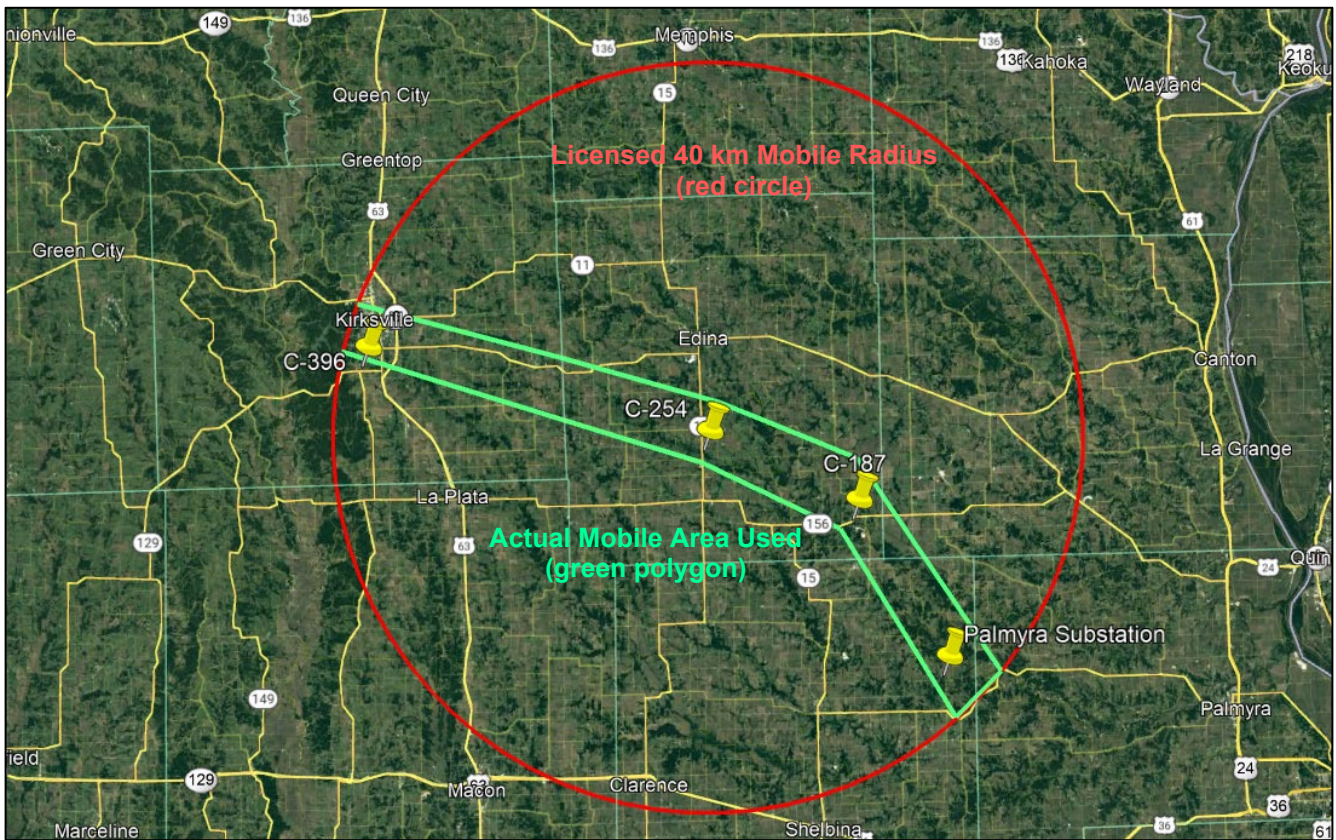


## EXHIBIT 1 DESCRIPTION OF MODIFICATION

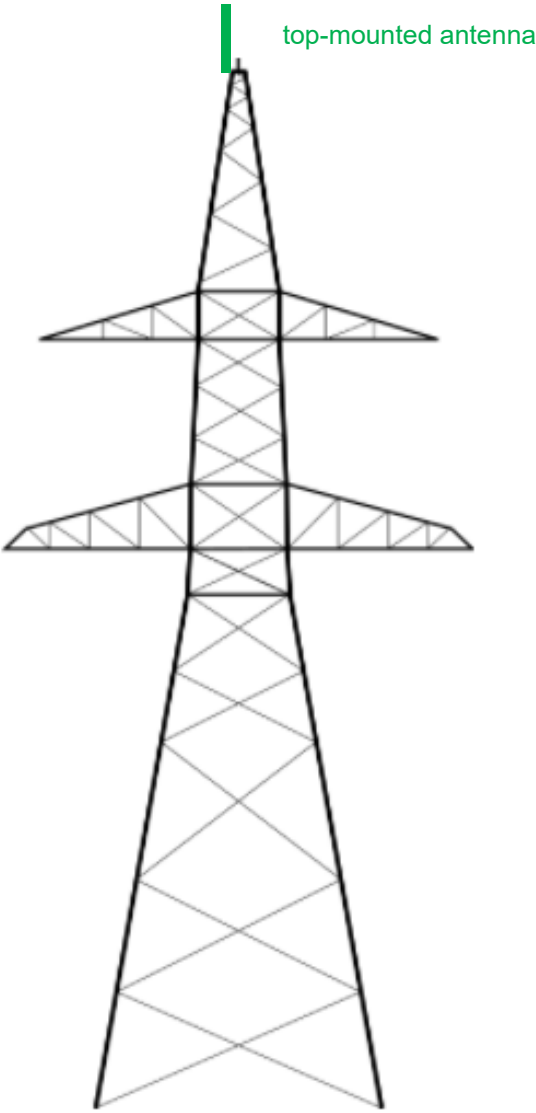
Rockwell Collins, Inc., a Raytheon Technologies company, proposes to modify license W12XZE to (1) add additional equipment units, (2) correct a mistake in the Coralville (JOHNSON), IA fixed station in which “kHz” was used instead of “MHz” and (3) add the following stations to the license:

Site Name	Location	County	Latitude	Longitude	Station Class
C-187	Route 156, Newark, MO 63458	Knox	39 59 21	-91 59 21	Fixed
C-254	County Road 286, Edina, MO 63537	Knox	40 3 35	-92 10 21	Fixed
C-396	Route 11, Kirksville, MO 63501	Adair	40 8 58	-92 35 48	Fixed
Palmyra Substation	County Road 248, Shelbyville, MO 63469	Shelby	39 50 11	-91 52 59	Fixed
Aircraft Corridor	40 km radius around C-254 for aircraft, but actual area used is a narrow 5 km corridor	multiple	40 3 35	-92 10 21	Mobile



The fixed stations are utility towers with top-mounted antennas. The mobile station is for manned aircraft (up to 5,000' AGL) and unmanned aircraft (up to 400' AGL). Although the mobile radius is 40 km, the actual aircraft flight path will be limited to the narrow corridor shown in green. There will be two-way air-to-ground communication between the fixed stations and the aircraft.

### FCC ASR Analysis for Fixed Locations



	<b>C-187</b>	<b>C-254</b>	<b>C-396</b>	<b>Palmyra Substation</b>
Structure Type	Utility Tower	Utility Tower	Utility Tower	Utility Tower
Overall Structure Height (AGL)	135 feet	145 feet	135 feet	119 feet
Support Structure Height (AGL)	128 feet	138 feet	128 feet	112 feet
Site Elevation (AMSL)	685 feet	780 feet	985 feet	660 feet
FCC ASR Required	no	no	no	no