

Figure 1. Distance from current transmitting site to location of ADDITIONAL transmitting site. Note this new site will be an addition , not a replacement of the current site.

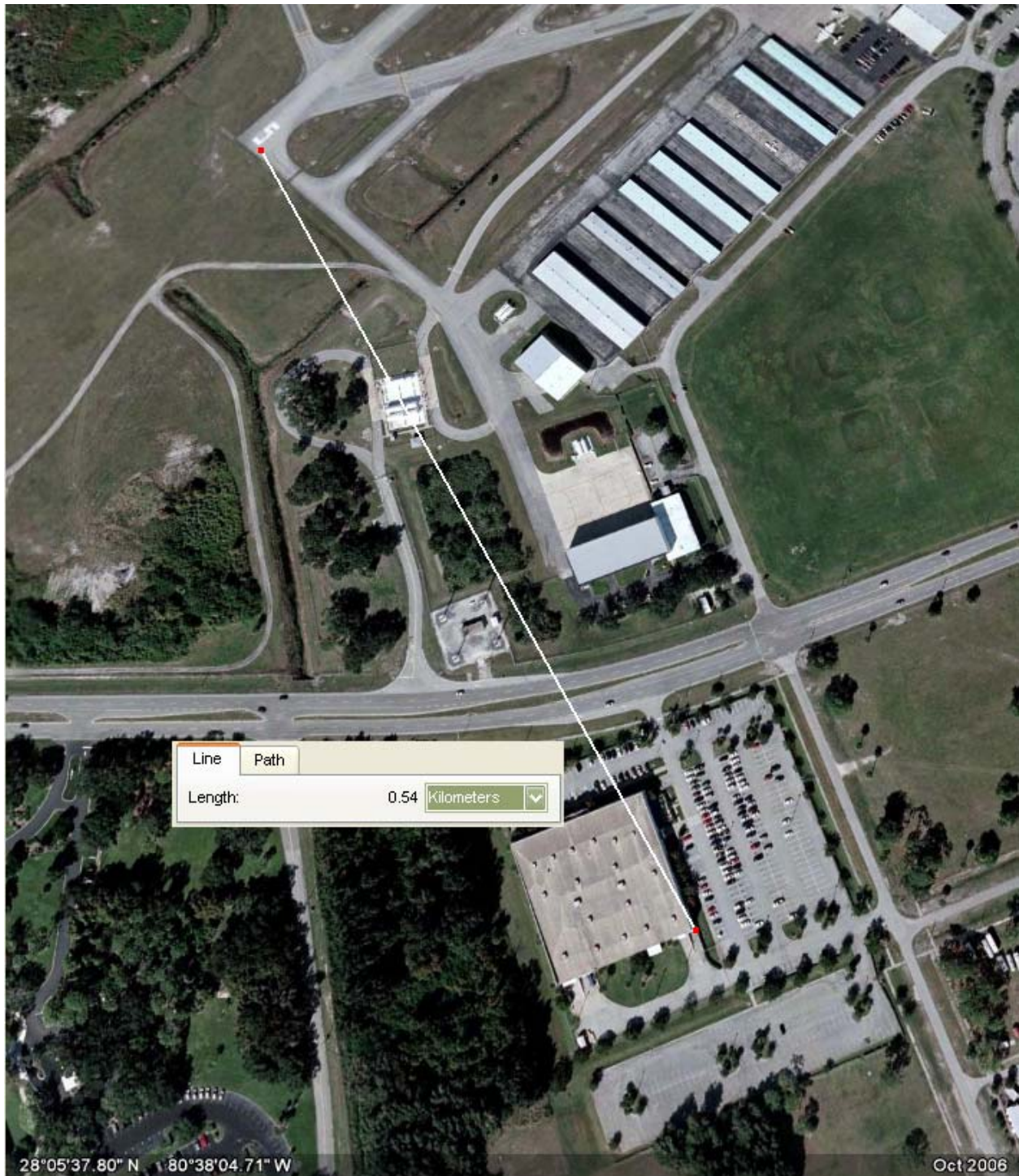


Figure 2. Distance (kilometers) to nearest active runway at MLB



Rockwell Collins, Inc.
Bldg 312
795 West NASA Blvd
Melbourne, FL 32901

Antenna type: terminated, folded dipole; antenna center mounted about 5 feet above building rooftop, antenna ends supported by rope to light posts as shown; each antenna leg is 90 feet in length(center-to-end) and supported at same height as antenna center.

Transmitter power: same as license WD2XZT
Transmitter frequency: same as license WD2XZT



Barker & Williamson

Model	Length	SWR <2:1
BWDS-180N	180 Ft	1.8 - 30 Mhz





Antenna shown rolled up and attached to optional FDMK mounting kit

Fig. 3. Position of BWDS-180N antenna at SE corner of the added transmit facility