

Directional Antenna Information

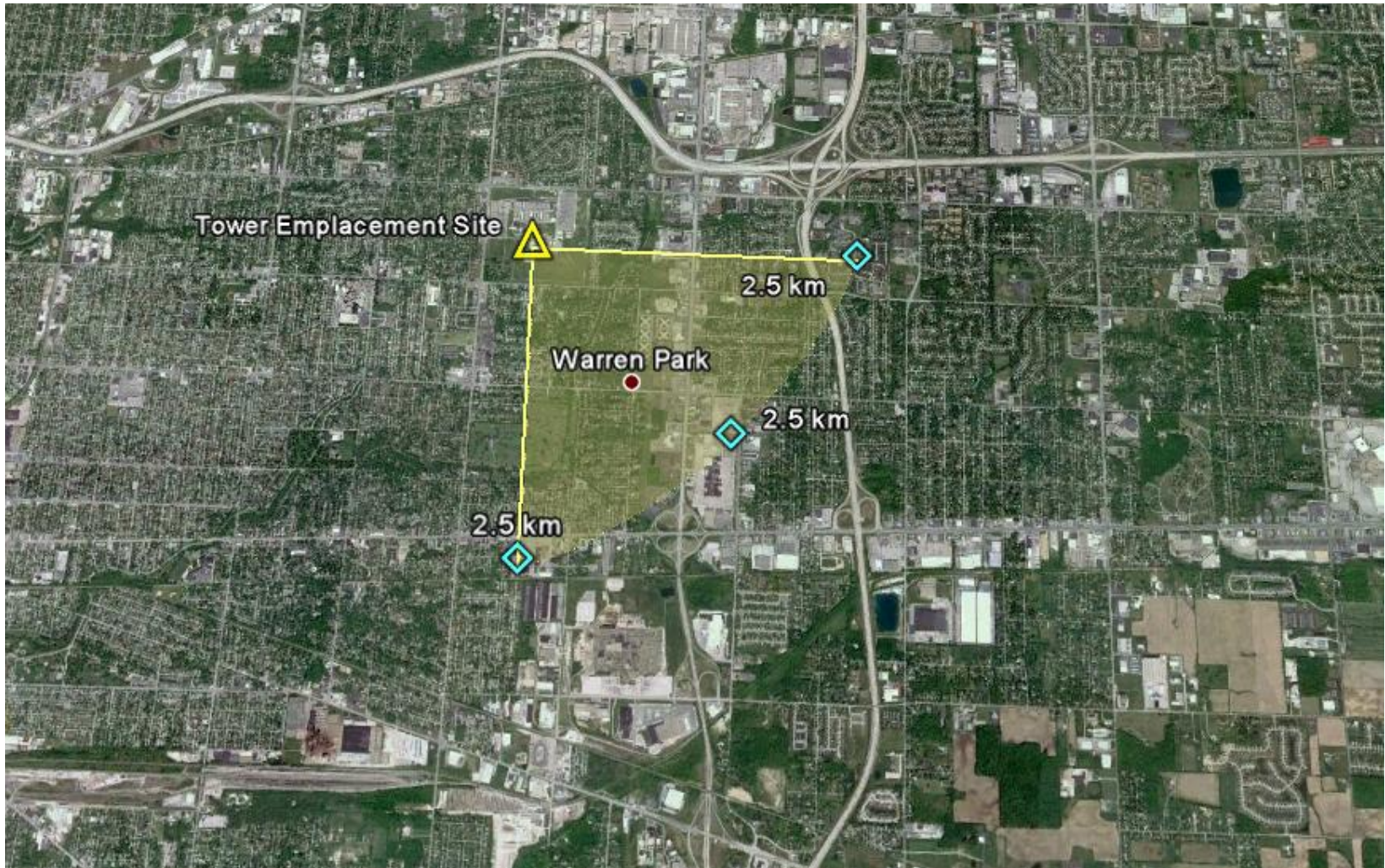
- The following is provided FYI:
 - Width of beam in degrees at the half-power point: 1.6° Azimuth, 1.7° Elevation
 - Elevation Orientation in horizontal plane: +/- 45° Electronically Scanned
 - Orientation in vertical plane: +/- 3° Electronically Scanned
 - Orientation will be limited via software-defined radiation control zones.

Raytheon Indianapolis Test Site – FAA Antenna Sketch



Test site is fenced, antenna is 9 meters above ground with 90 degree horizontal and 8 degree vertical scanning angles

Maximum Range of Radar Test



Range will be limited to 2.5 km during the short durations the radar is operational