

World-Band (2G/3G/4G) Cellular Omni-Directional Flat 3-5 dB Swivel Antenna

Model: ANT-120-002H

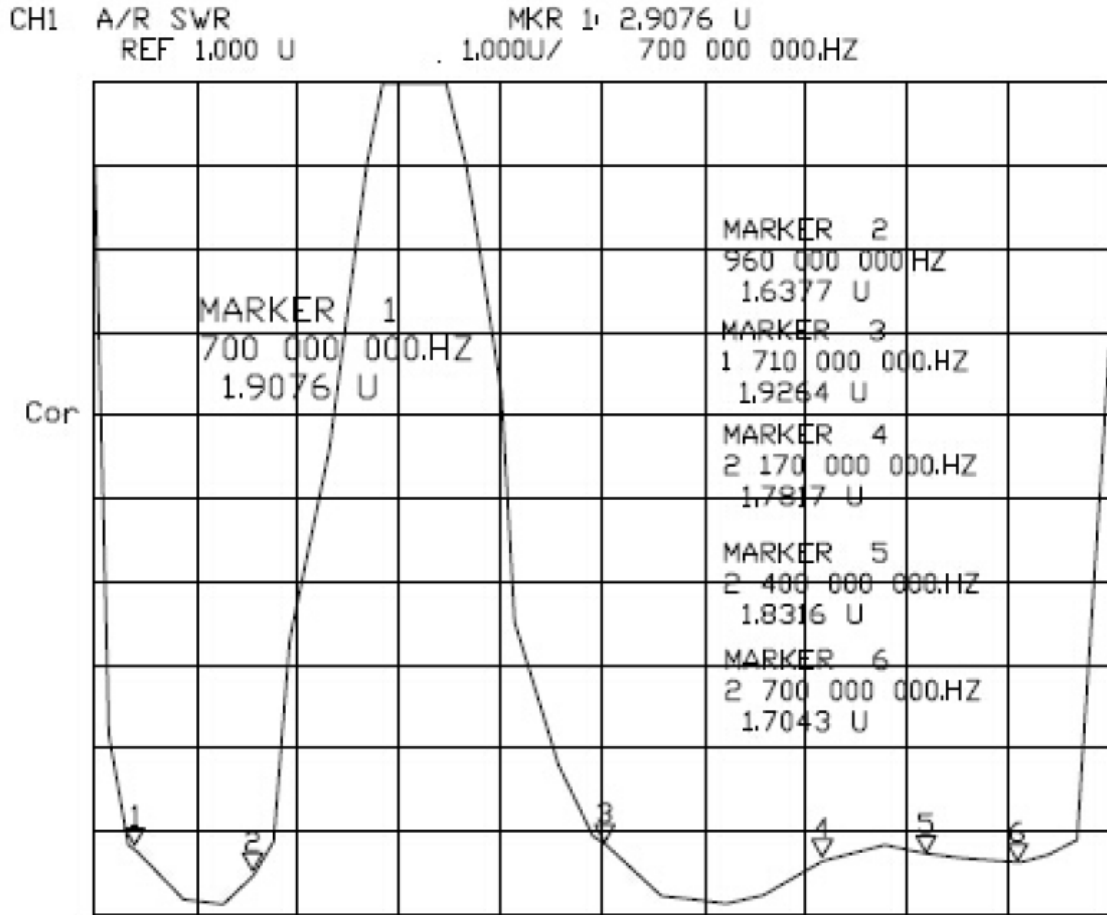


Technical Specifications

Frequency Range	700-2700 MHz
Gain	3-5 dB
VSWR	$\leq 2.0:1$
Input Impedance	50 ohm
Polarization Type	Vertical
Max Input power	50 W
Antenna Length	157 mm
Connector Type	SMA Male
Antenna Color	Black
Storage Temperature	-30°C to +75°C

Model: ANT-120-002H

Characteristic Curve



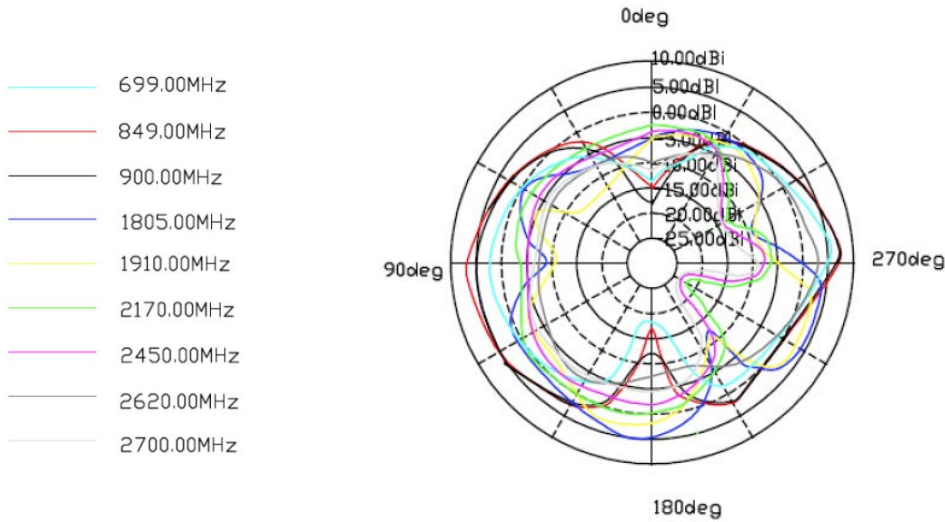
CH1 START 600 000 000.HZ

STOP 2 800 000 000.HZ

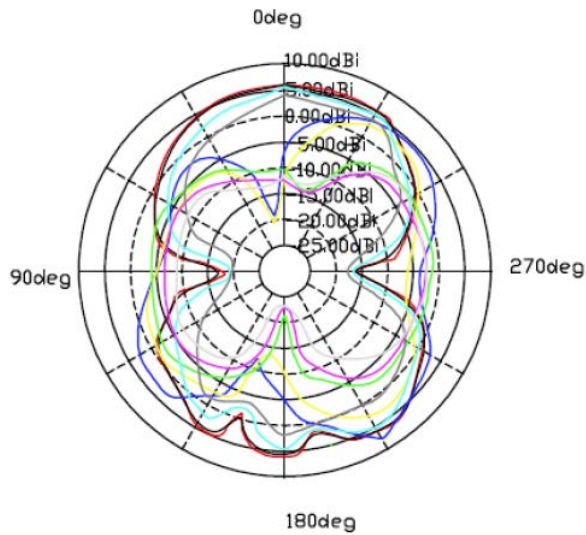
Model: ANT-120-002H

Radiation Pattern

Horizontal Plane



Vertical Plane



Model: ANT-120-002H

Mechanical Specifications (mm)

