

# World-Band (2G/3G/4G) Cellular Omni-Directional Flat 3-5 dB Swivel Antenna

Model: ANT-120-002H



## Technical Specifications

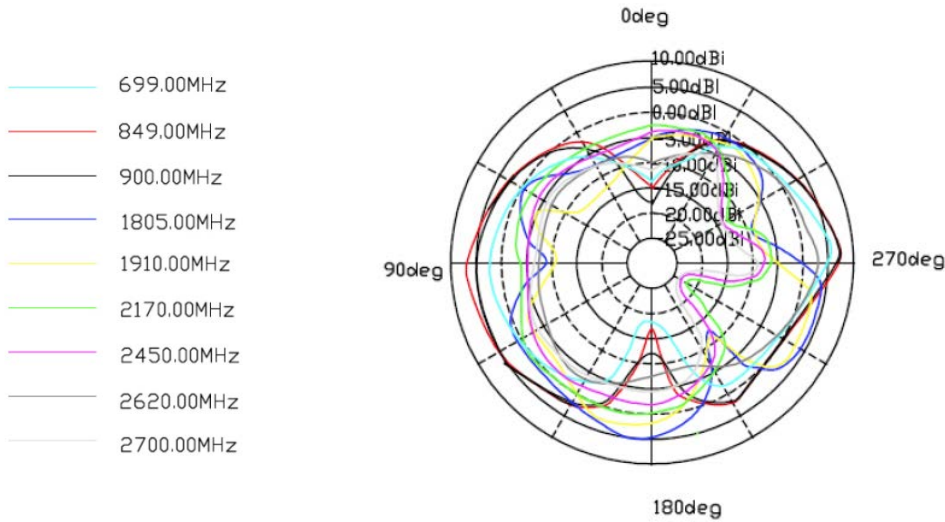
<b>Frequency Range</b>	700-2700 MHz
<b>Gain</b>	3-5 dB
<b>VSWR</b>	$\leq 2.0:1$
<b>Input Impedance</b>	50 ohm
<b>Polarization Type</b>	Vertical
<b>Max Input power</b>	50 W
<b>Antenna Length</b>	157 mm
<b>Connector Type</b>	SMA Male
<b>Antenna Color</b>	Black
<b>Storage Temperature</b>	-30°C to +75°C



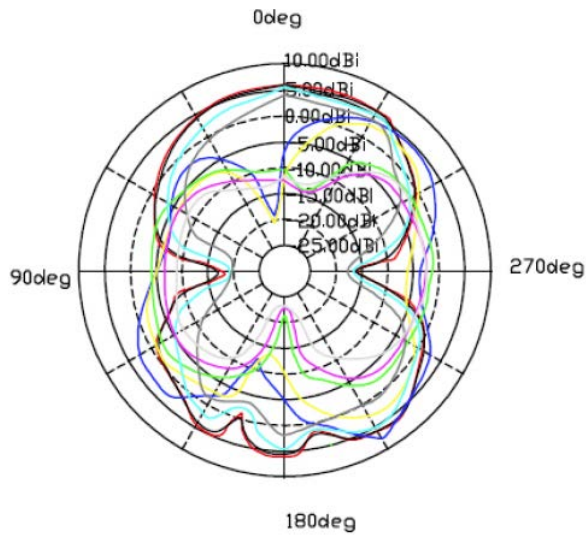
# Model: ANT-120-002H

## Radiation Pattern

Horizontal Plane



Vertical Plane



Model: ANT-120-002H

**Mechanical Specifications (mm)**

