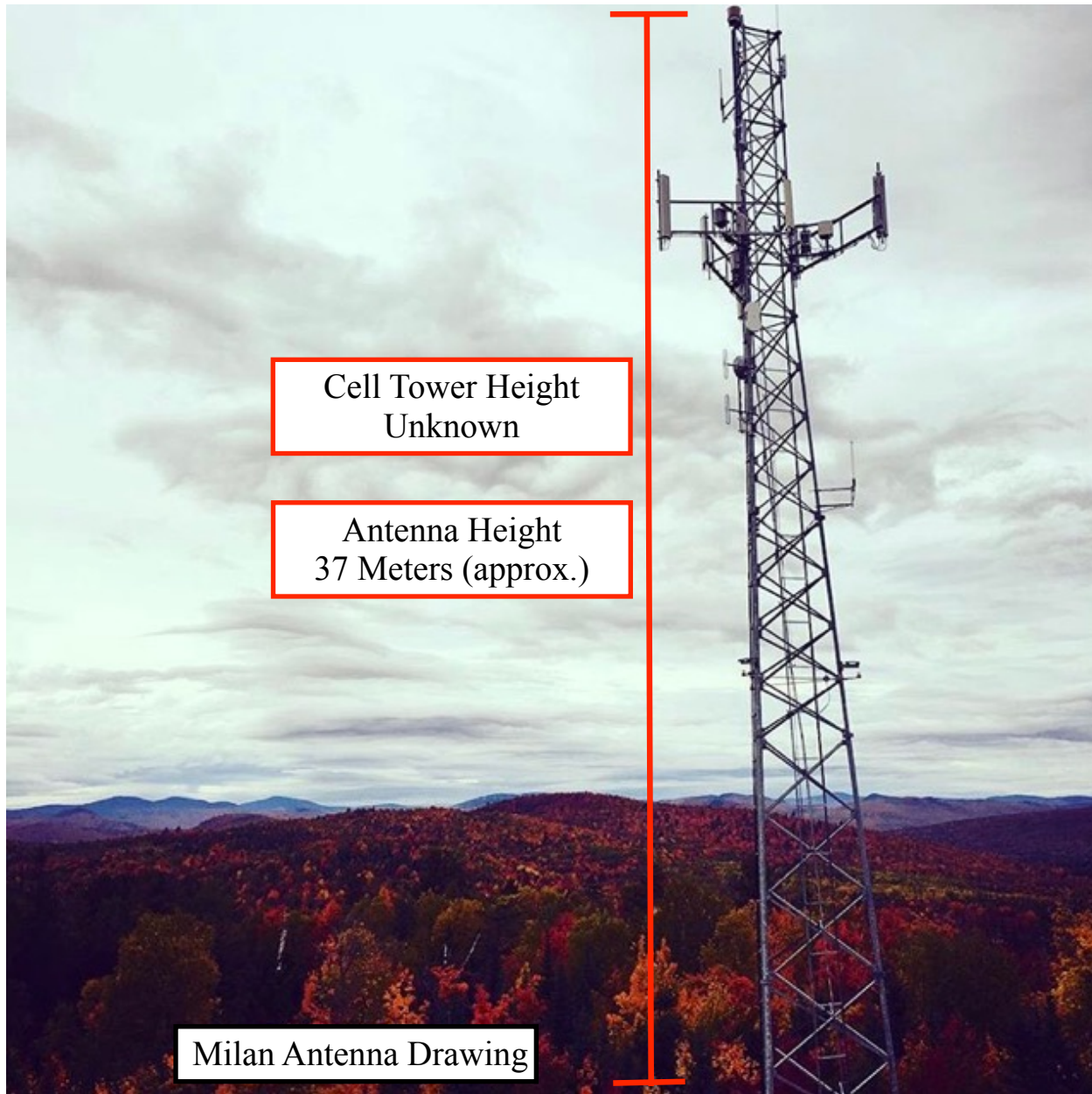


Utility Pole and Antenna Height
10 Meters (approx.)

Errol Antenna Drawing



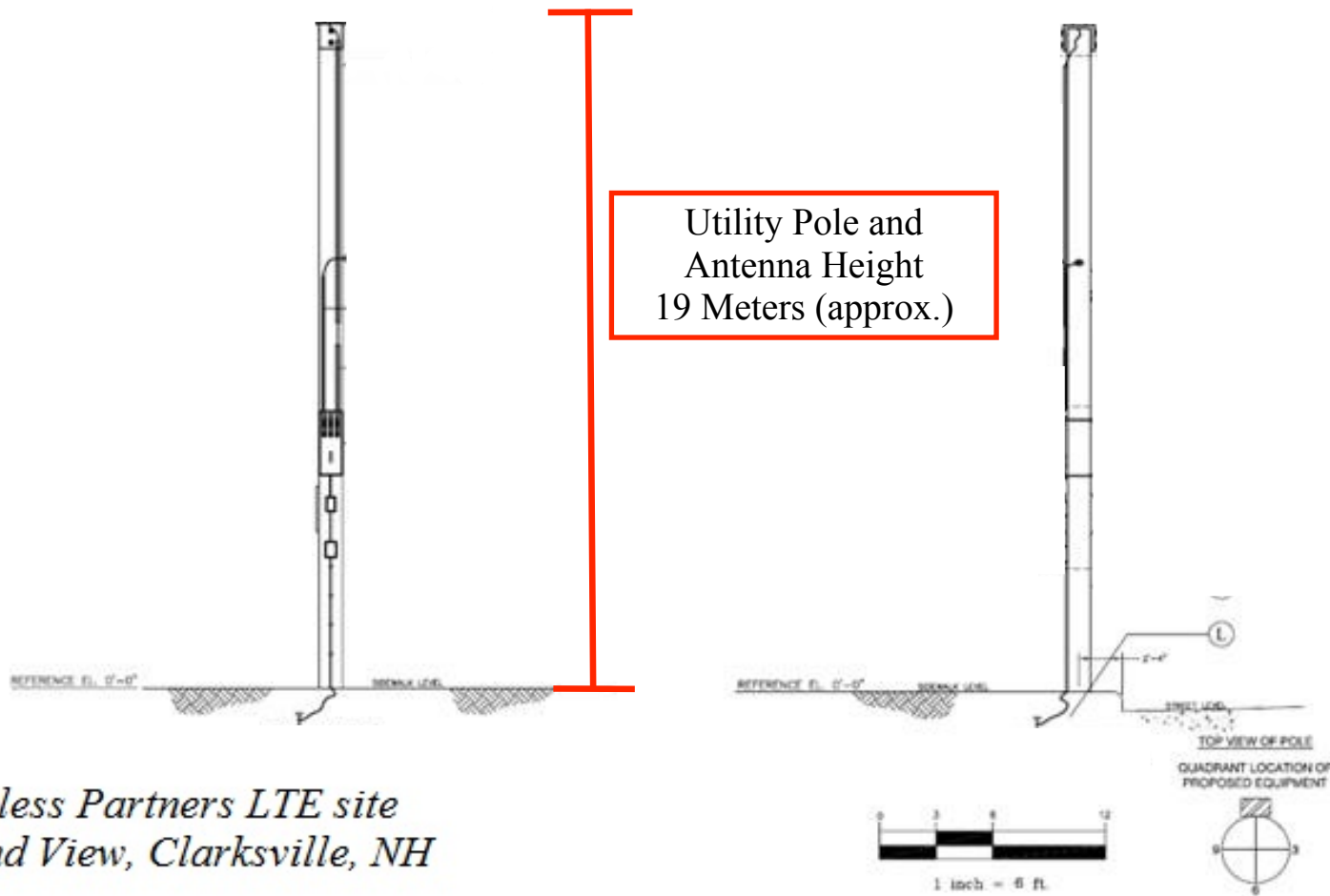
Cell Tower Height
Unknown

Antenna Height
37 Meters (approx.)

Milan Antenna Drawing

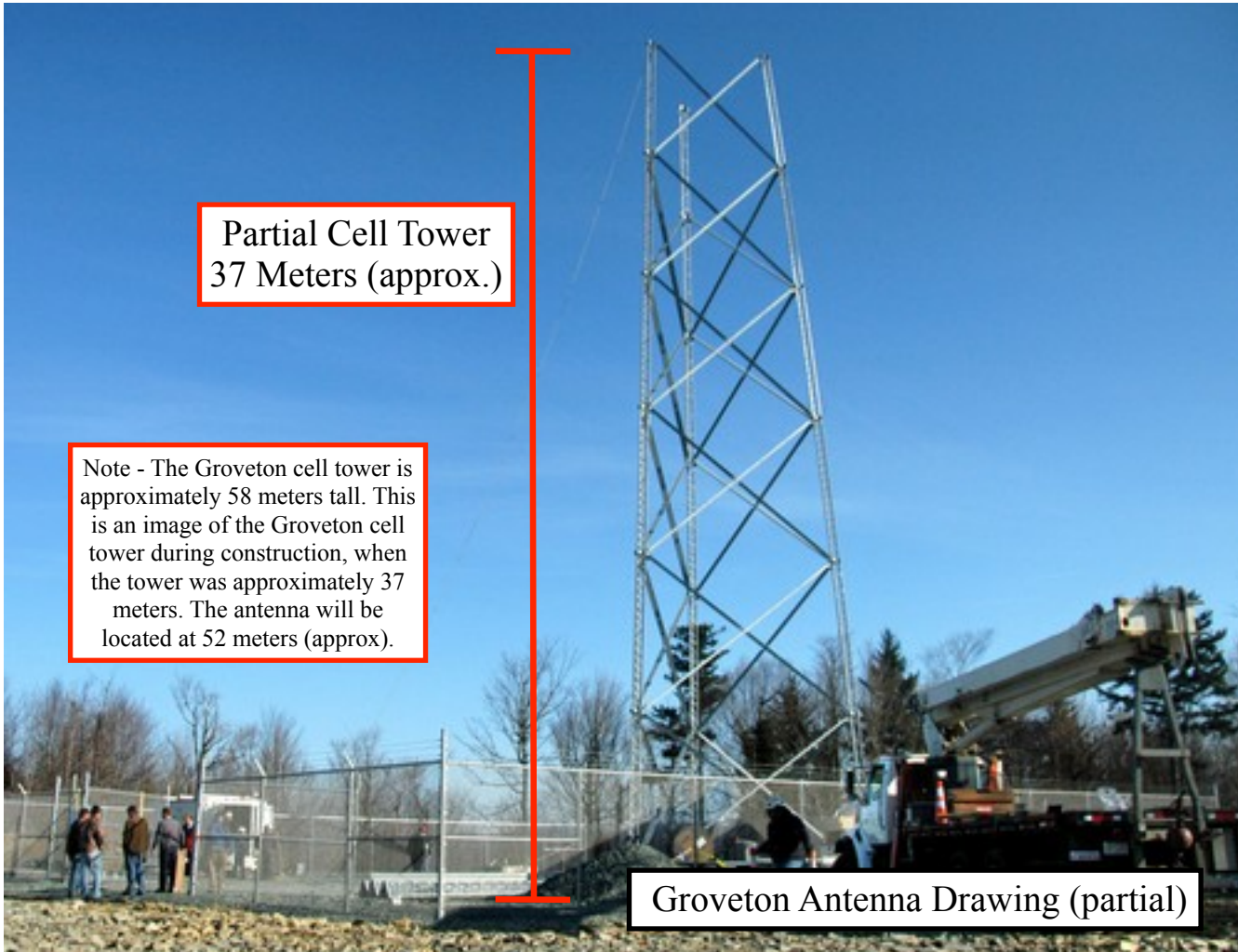


Clarksville Antenna Drawing (Aerial)



*Wireless Partners LTE site
Grand View, Clarksville, NH*

Clarksville Antenna Drawing, Parallel
Wireless Internal Rendering of Utility Pole

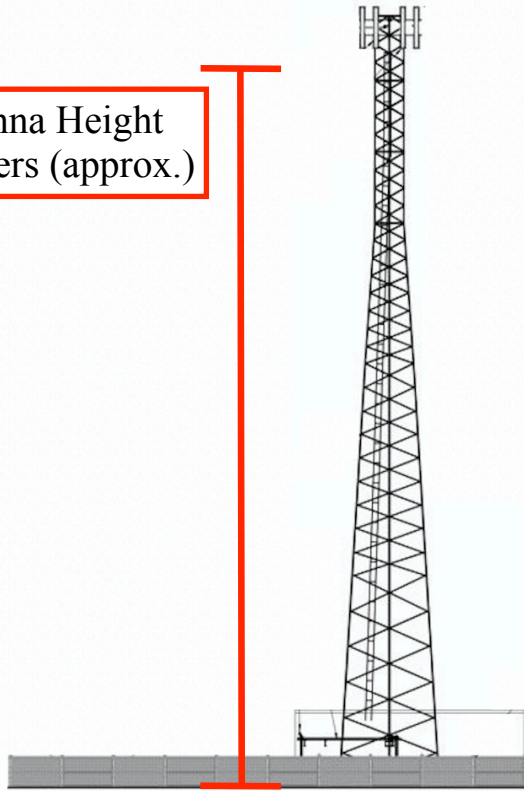


Partial Cell Tower
37 Meters (approx.)

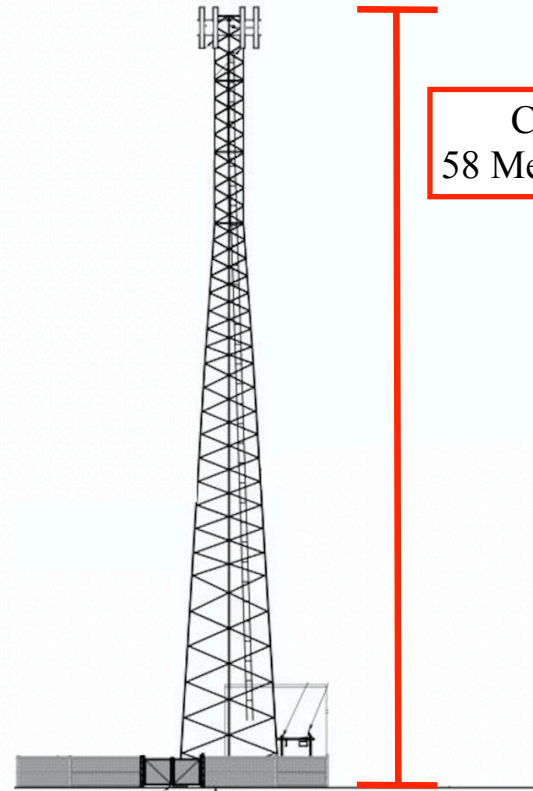
Note - The Groveton cell tower is approximately 58 meters tall. This is an image of the Groveton cell tower during construction, when the tower was approximately 37 meters. The antenna will be located at 52 meters (approx).

Groveton Antenna Drawing (partial)

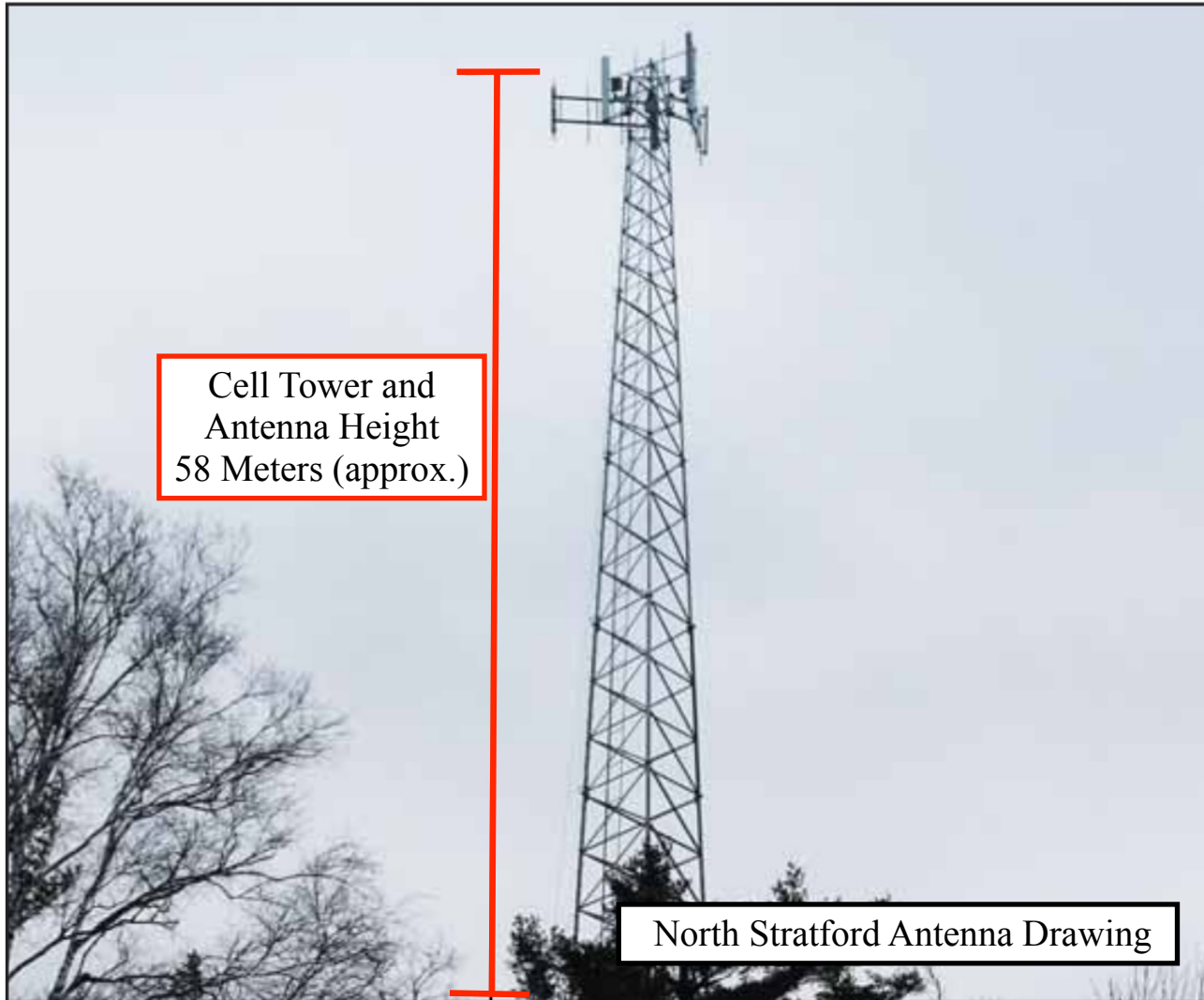
Antenna Height
52 Meters (approx.)



Cell Tower
58 Meters (approx.)



Groveton Antenna Drawing, Parallel
Wireless Internal Rendering of Cell Tower



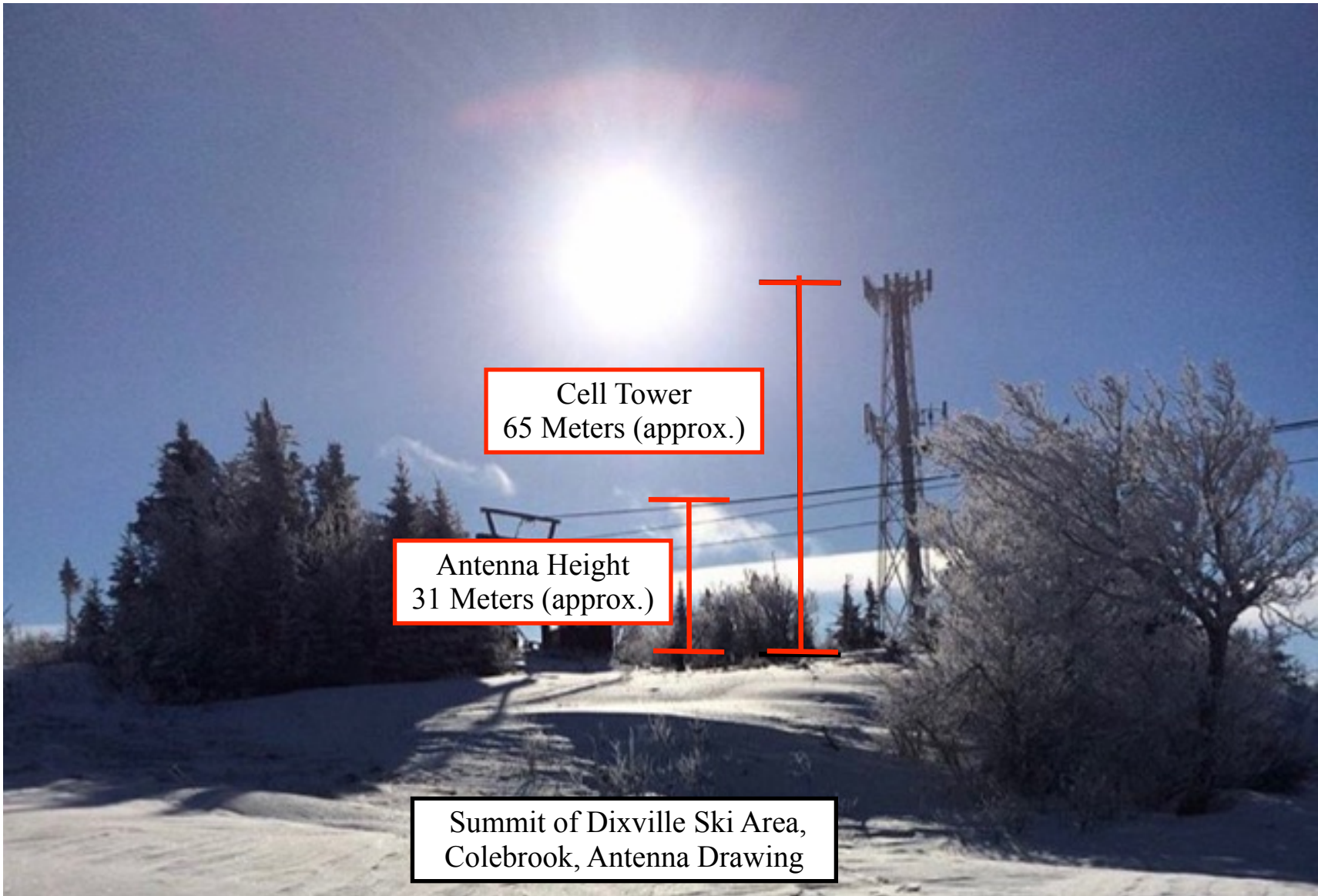
Cell Tower and
Antenna Height
58 Meters (approx.)

North Stratford Antenna Drawing



Cell Tower and
Antenna Height
43 Meters (approx.)

32 Bill Bromage Drive,
Colebrook, Antenna Drawing



Cell Tower
65 Meters (approx.)

Antenna Height
31 Meters (approx.)

Summit of Dixville Ski Area,
Colebrook, Antenna Drawing