

**NOTES**

CONTRACTOR TO VERIFY HEIGHT AND DIRECTION OF ANTENNAS WITH PROSCT INSURERS.

ALL ANTENNA ARMS TO BE FROM TRUE NORTH.

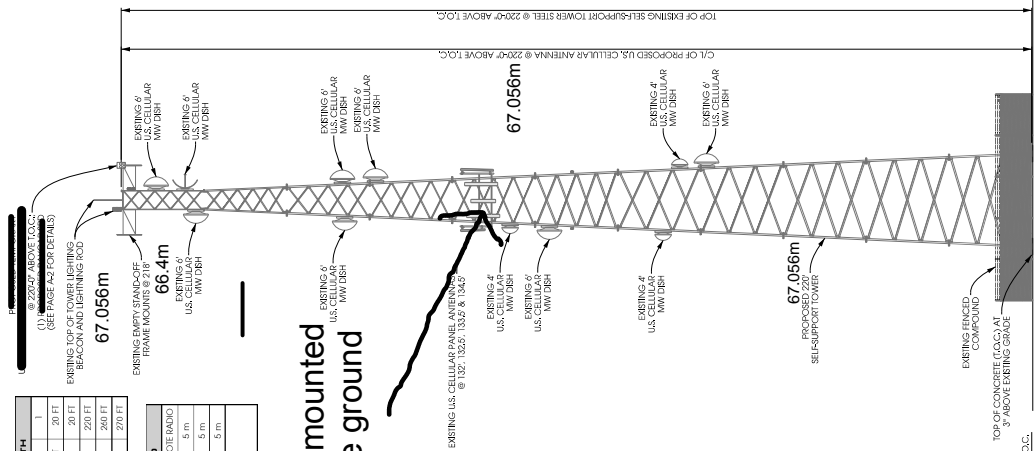
CONTRACTOR TO VERIFY LIGHTNING ROD EXTENDS 2 MIN. ABOVE ALL ANTENNAS & EQUIPMENT.

BUREN HYBRID CABLE LENGTH	
QUANTITY FROM SHELTER BAY/CAP SPD	20 FT
LENGTH FROM SHELTER BAY/CAP SPD TO COAX PORT	20 FT
LENGTH ALONG ICE BRIDGE	220 FT
LENGTH FROM T.O.C. TO TOWER TOP BAY/CAP SPD	240 FT
TOTAL LENGTH OF HYBRID CABLE	270 FT
ROUNDED LENGTH**	270 FT

HYBRID JUMPER CABLE INFO	
BAY/CAP TO REMOVE RADIO	5 m
ALPHA SECTOR	16.4 FT
BETA SECTOR	16.4 FT
GAMMA SECTOR	16.4 FT
	5 m

\*\* PREFERRED JUMPER LENGTH OF 5m (16.4')  
 \* MAXIMUM JUMPER LENGTH OF 6m (19.7')

**5G radio to be mounted at 41.1m above ground**



**A TOWER PROFILE (SOUTH ELEVATION)**

SCALE: 11" x 17" = 1/4" = 30'  
 22" x 34" = 1" = 150'



**TOWER ELEVATION**

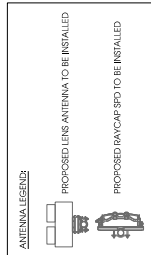


**EXISTING SECTOR FRAMES**

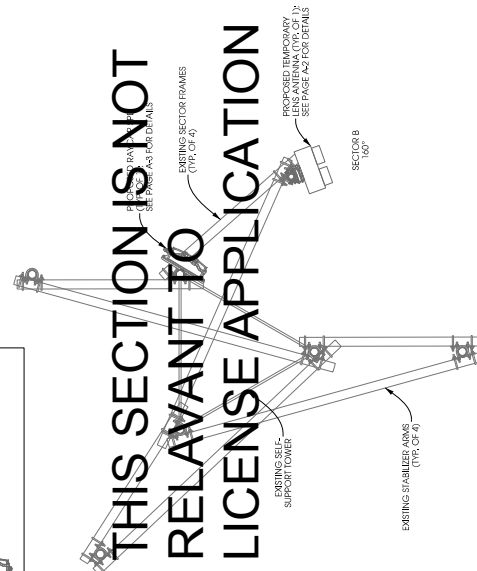


**NOTE:**  
 ALL ANTENNA ARMS TO BE FROM TRUE NORTH

**NOTE:**  
 APPROX. TOWER WIDTH @ 220'0" = 5'



**THIS SECTION IS NOT RELEVANT TO LICENSE APPLICATION**



**B ANTENNA PLATFORM ASSIGNMENT**

SCALE: 11" x 17" = 1/4" = 1/4"  
 22" x 34" = 1/2" = 1/4"