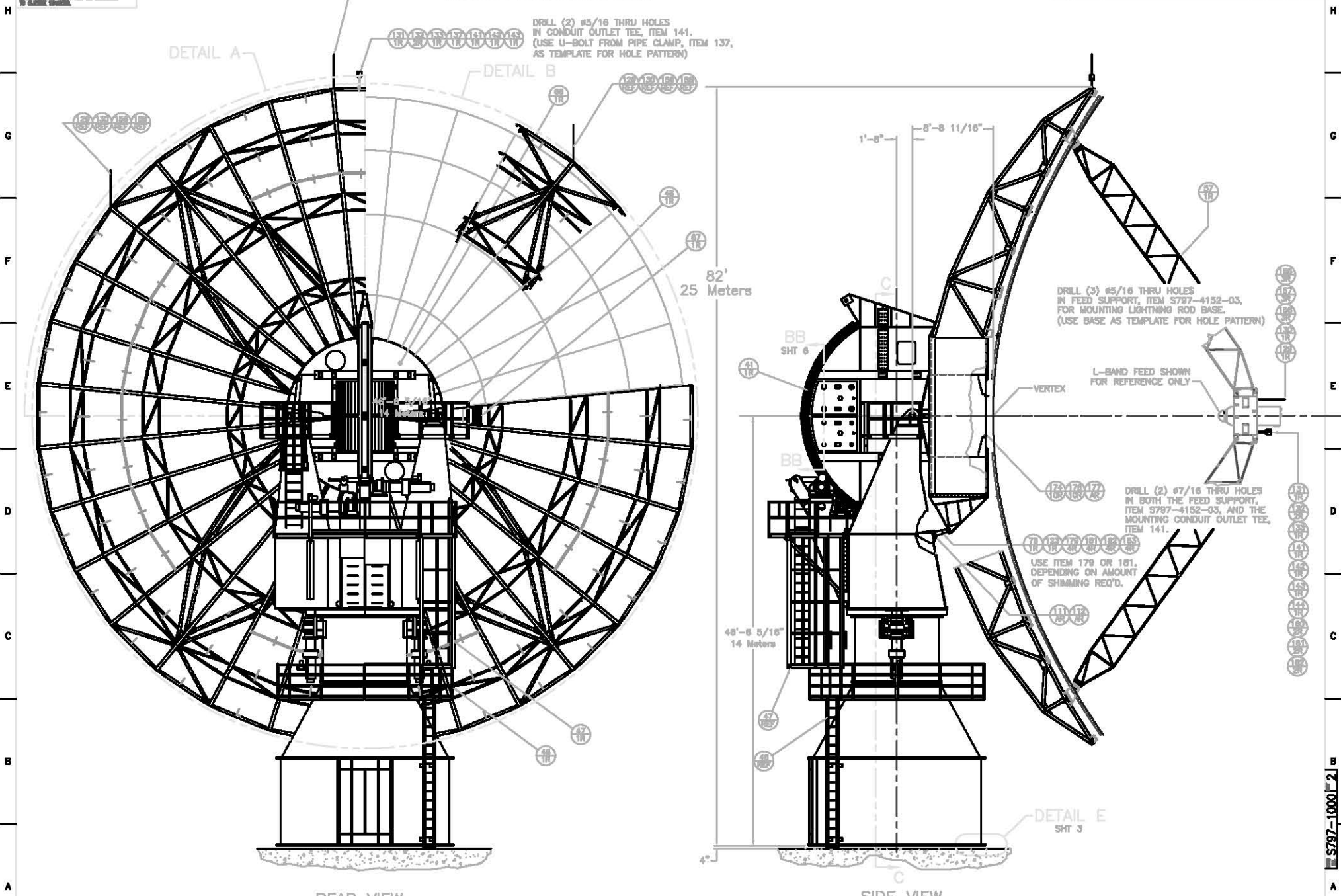


PROPRIETARY NOTICE  
 THIS DRAWING IS THE PROPERTY OF THE UNITED STATES GOVERNMENT AND IS LOANED TO YOU BY THE NATIONAL BUREAU OF STANDARDS. IT IS TO BE USED FOR THE PURPOSES SPECIFIED IN THE ORDER AND IS NOT TO BE REPRODUCED OR TRANSMITTED IN ANY FORM OR BY ANY MEANS, ELECTRONIC OR MECHANICAL, INCLUDING PHOTOCOPYING, RECORDING, OR BY ANY INFORMATION STORAGE AND RETRIEVAL SYSTEM, WITHOUT PERMISSION IN WRITING FROM THE NATIONAL BUREAU OF STANDARDS.

REVISIONS			
NO.	DESCRIPTION	DATE	BY
1	ISSUED ORIGINAL RELEASE	10/20/58	WJW
2	ADDED 2 ADDITIONAL LIGHTNING AIR TERMINALS ITEMS 129 & 130 & ASSOCIATED MOUNTING HARDWARE	10/20/58	WJW



REAR VIEW

-01 TOP ASSEMBLY

SIDE VIEW