

# The purpose of GPS Repeater Usage

LGE USA QA

## Purpose for GPS repeater usage

LG will use the GPS Repeater for Experimental RNSS Test Equipment purposes.

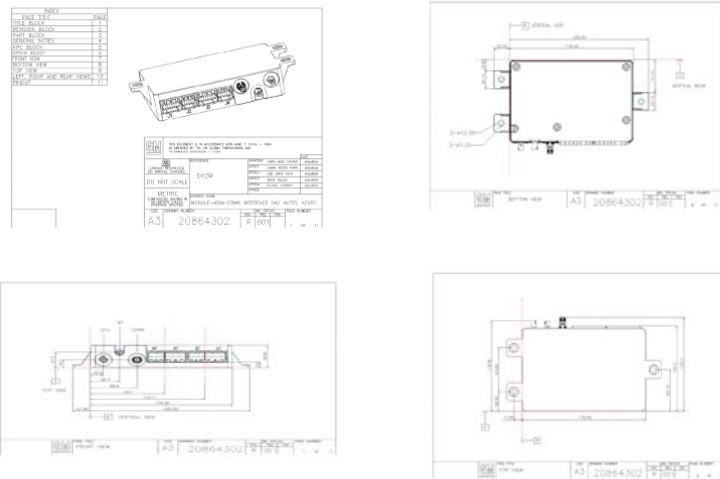
LG will be testing the GPS receivers in the GM OnStar electronic Module(Automotive part) that LG manufactures in China and provides to GM.



Product Introduction :  
GM OnStar Module  
Assembly Communication  
Interface including GPS  
receiver

Tester for Power on the  
product

## Product size



## Installation Location & building layout for GPS repeater

**Address:** 7300 15 Mile Rd., Sterling Heights, MI 48312

**The purpose of usage:** To test automotive part module assembly communication interface (GM OnStar Telematic module)

