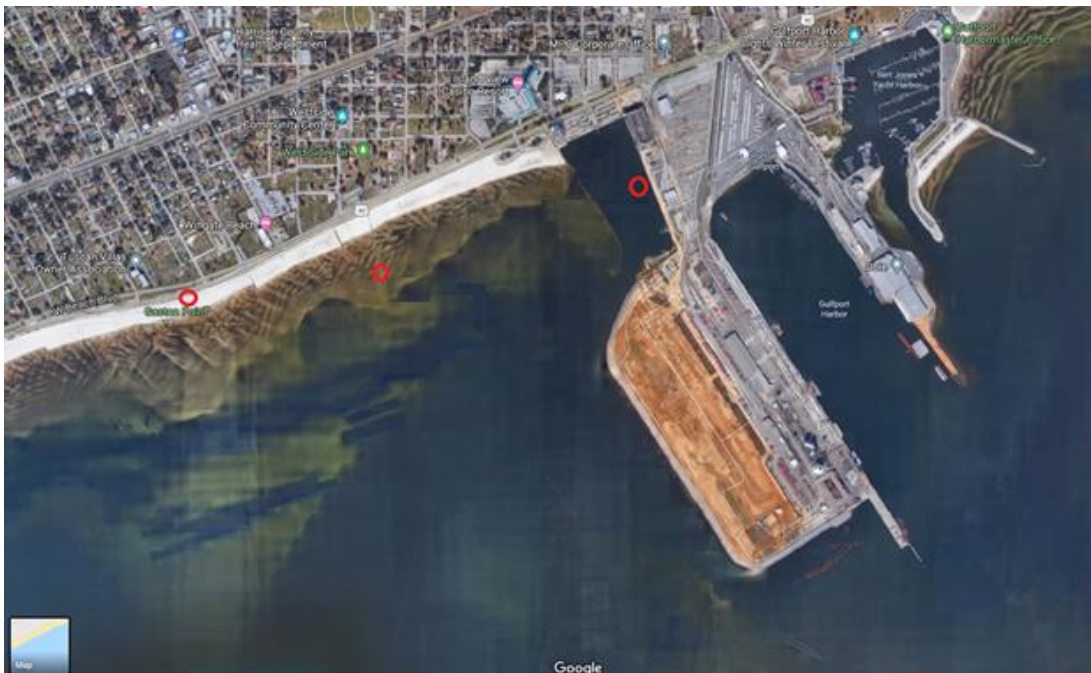


1203-EX-ST-2019

EL656204

### Gulfport, MS

Demonstration of COMINT collection system on maritime vessel for marketing purposes. Receive-only collection system is located in the water next to the pier around 30 21 37.4N 089 05 52W. Target emitter 1 is stationary at 30 21 27N 089 06 29W. Target emitter 2 is stationary at 30 21 21.8N 089 06 57W. The radios transmit for 10 seconds on, 30 seconds off. All frequencies will be used from both target locations.



### Newport, RI

Demonstration of COMINT collection system on maritime vessel for marketing purposes. Receive-only collection system is located in the water in the general vicinity of NUWC facility. Target emitter 1 is stationary at 41 32 07N 071 18 50W. Target emitter 2 is stationary at 41 31 22N 071 19 25W. The radios transmit for 10 seconds on, 30 seconds off. All frequencies will be used from both target locations.

