



Date: 14-Feb-18

Subject: Intel Experimental License: 0113-EX-CN-2018

Introduction

Intel is a world leader in computing innovation. The company designs and builds the essential technologies that serve as the foundation for the world's computing devices. Intel also offers a portfolio of wireless communications solutions to connect a broad range of devices. Hardware and software products by Intel and its subsidiaries power a majority of the world's data centers, connect hundreds of millions of cellular handsets and help secure and protect computers, mobile devices and corporate and government IT systems. Intel technologies are also inside intelligent systems, such as in automobiles, automated factories and medical devices.

Testing to be performed

Intel's research and development teams have been designing new radio technologies for ITS. Over the air testing is required to validate the designs, characterize usage models and verify overall performance.



Locations:

Intel Jones Farm (JF) Campus
2111 NE 25th Avenue, JF2-15
Hillsboro, OR 97124

JF3: Lat 45.54 / Long -122.96; Lat 45°32'35" N / Long 122°57'41" W, radius of 5 km. The closest distance to an airport runway (HIO (Portland-Hillsboro Airport)) is approximately 540 meters.

Intel Santa Clara (SC) Campus
2200 Mission College Blvd
Santa Clara, CA 95054

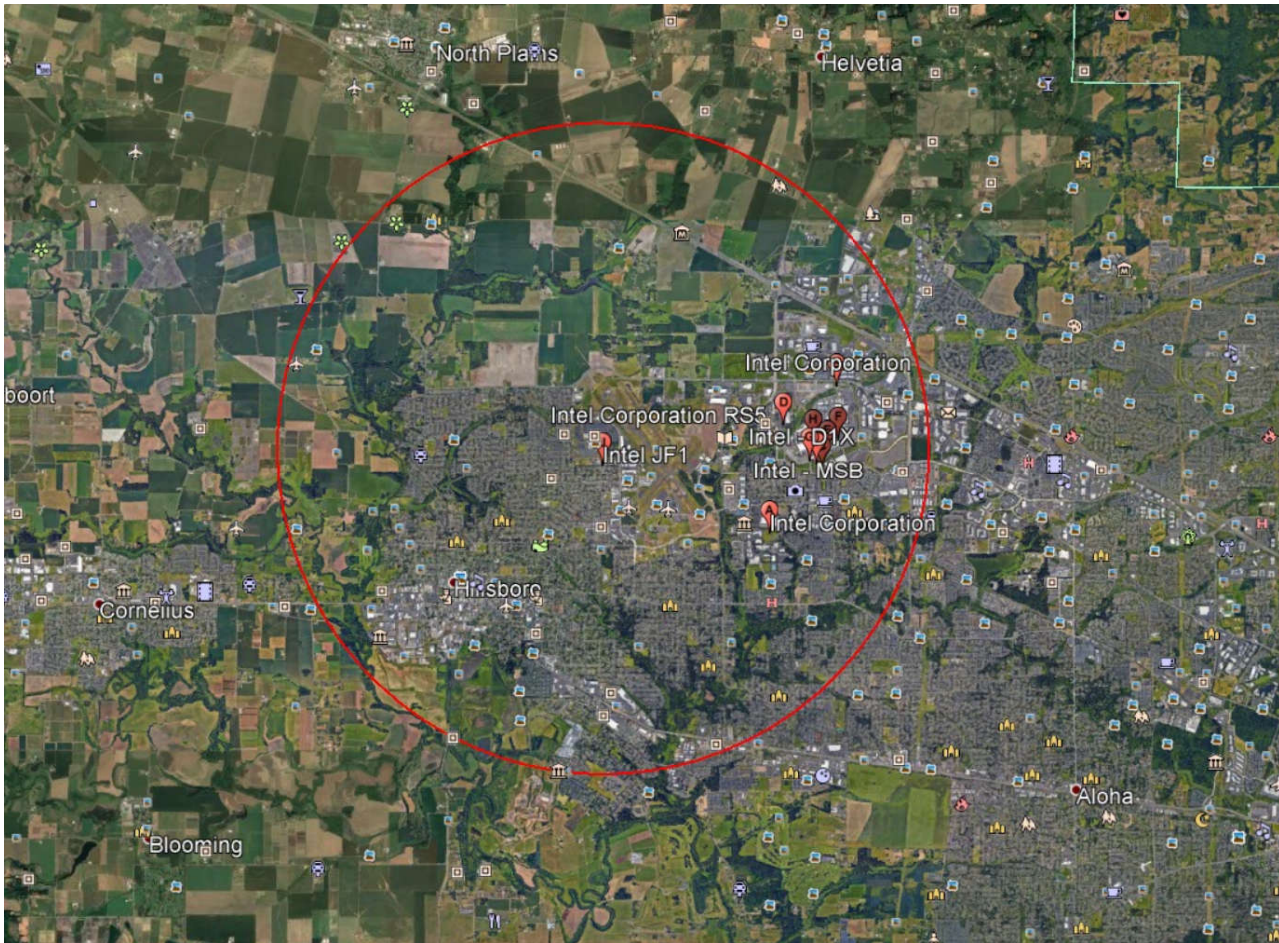
Centered on the campus: Lat 37.39 / Long -121.96; Lat 37°23'10" N / Long 121°57'53" W, radius of 5 km. The closest distance to an airport runway (SJC (San Jose International Airport)) is ~ 2.4km.

Transmitter & Antenna Parameters:

Site Details					Antenna					Transmitter Emission		
Location	Station Type	Latitude (dd mm ss.ss)	Longitude (dd mm ss.ss)	AGL (m)	Type	ERP (W)	ERP (dBm)	EIRP (W)	EIRP (dBm)	Frequency (MHz)	Bandwidth	Designator
Within 5 km radius of Jones Farm campus Hillsboro, OR 97124	FX & MO	45°32'35" N	122°57'41" W	<6m	Patch	1.2	30.85	2	33	5855-5875	10 MHz	10M0W7D
Within 5 km radius of Jones Farm campus Hillsboro, OR 97124	FX & MO	45°32'35" N	122°57'41" W	<6m	Patch	1.2	30.85	2	33	5855-5875	20 MHz	20M0W7D
Within 5 km radius of RNB campus Santa Clara, CA	FX & MO	37°23'10" N	121°57'53" W	<6m	Patch	1.2	30.85	2	33	5855-5875	10 MHz	10M0W7D
Within 5 km radius of RNB campus Santa Clara, CA	FX & MO	37°23'10" N	121°57'53" W	<6m	Patch	1.2	30.85	2	33	5855-5875	20 MHz	20M0W7D



Geographical Area of Jones Farm, Hillsboro, Oregon Site



Intel Corporation
2111 NE 25th Ave.
Hillsboro, OR 97124



Geographical Area of Santa Clara, California Site



Equipment List:

Manufacturer	Model Number	Usage	No. Of Units	Experimental
Intel Corporation	tbd	fixed	4	Yes
Intel Corporation	tbd	mobile	16	Yes