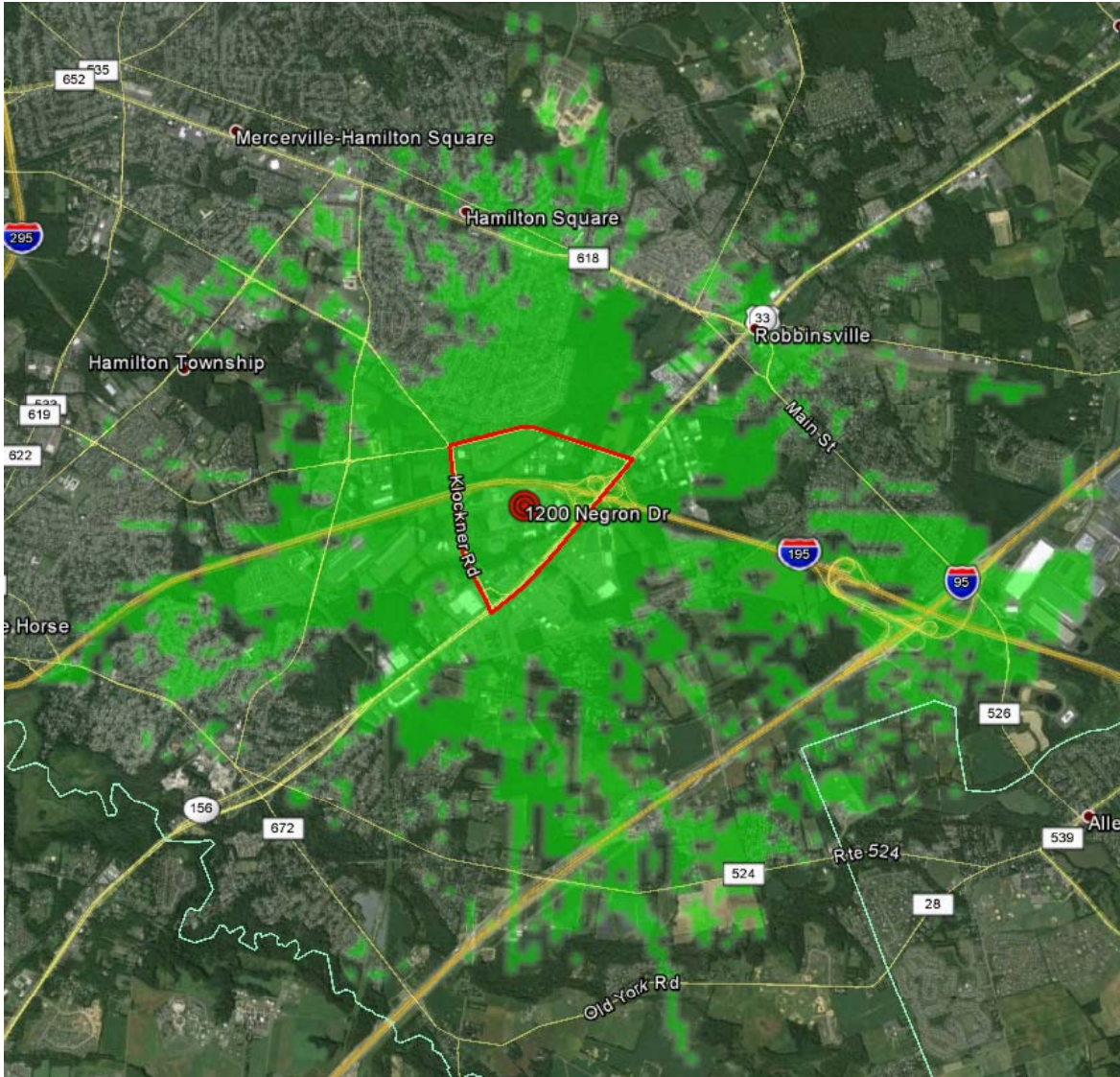


4.8km Radius of Coverage (RSSI -98 dBm)



- LTE Antenna Ht – 2.4m
- eNodeB Power = 5W
- LTE Antenna Gain = 3 dBi
 - EIRP = 40 dBm
- Mobile Antenna Ht = 1.5m
- Mobile Antenna Gain = 3 dBi
- Mobile Power = 23 dBm

Mobile Boundry - 1.1 km Radius

