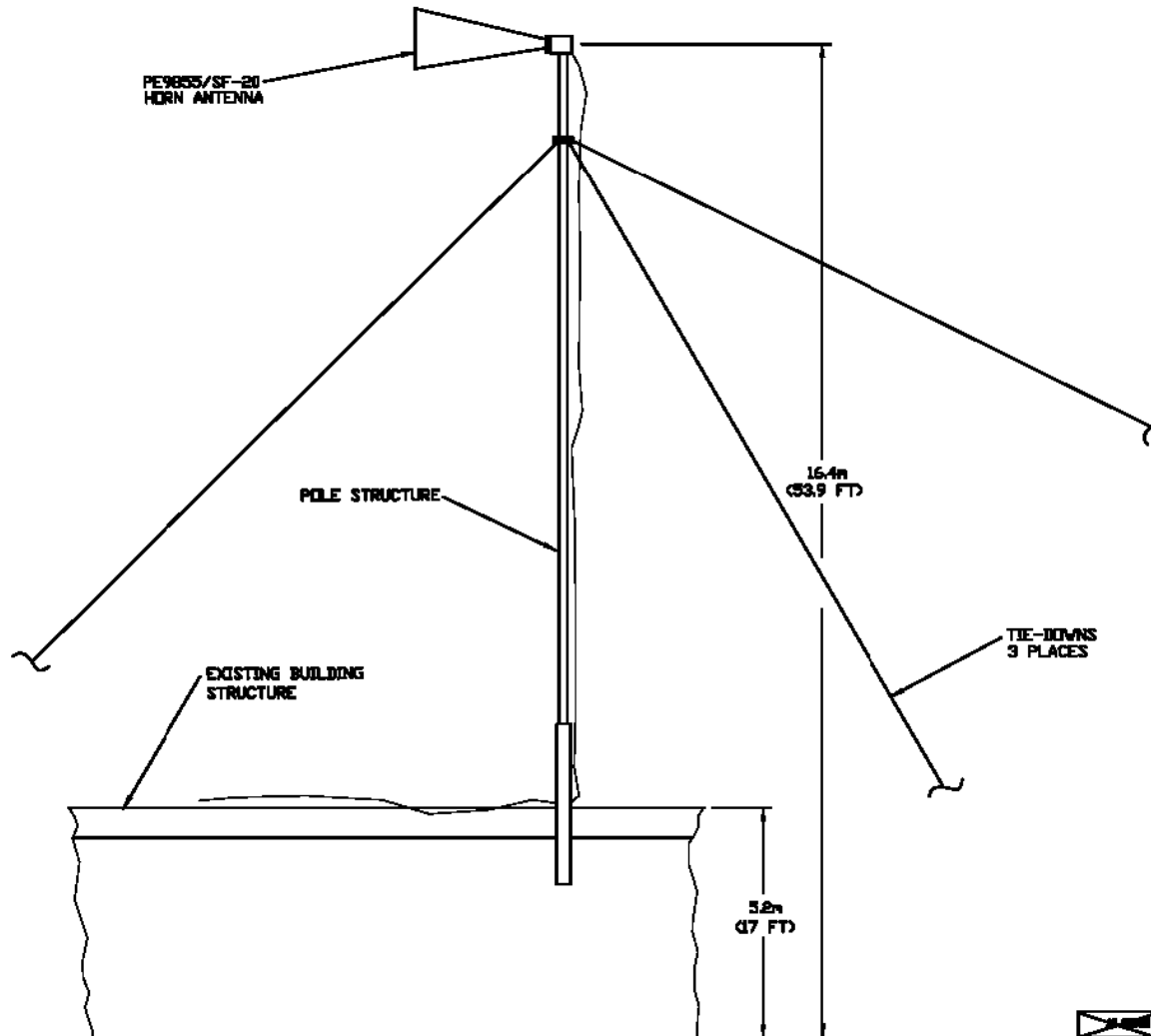


REVISIONS			
REV	DESCRIPTION	DATE	APPROVED
A	PRODUCTION RELEASE	04/01/7	



THIS DOCUMENT, DRAWINGS, AND DATA ARE HEREBY RELEASED BY THE CONTRACTOR TO THE PUBLIC AND WILL BE MADE AVAILABLE TO ANY PERSON REQUESTING IT. THIS DOCUMENT IS NOT TO BE REPRODUCED OR TRANSMITTED IN ANY FORM OR BY ANY MEANS, ELECTRONIC OR MECHANICAL, INCLUDING PHOTOCOPYING, RECORDING, OR BY ANY INFORMATION STORAGE AND RETRIEVAL SYSTEM. THE CONTRACTOR ASSUMES NO LIABILITY FOR THE USE OF THIS DOCUMENT FOR ANY PURPOSES OTHER THAN THAT FOR WHICH IT WAS PREPARED. THE CONTRACTOR ASSUMES NO LIABILITY FOR THE USE OF THIS DOCUMENT FOR ANY PURPOSES OTHER THAN THAT FOR WHICH IT WAS PREPARED.

REV	DESCRIPTION	DATE	APPROVED
D	HORN ANT		A
			1

1. LATITUDE AND LONGITUDE FOR LC-3  
 CONTRACTOR'S POINT LOCATION ARE:  
 34° 12' 50" N  
 118° 28' 19" W  
 NOTES: UNLESS OTHERWISE SPECIFIED

SEE SEPARATE PARTS LIST

APPROVED FOR CONSTRUCTION	DATE	BY
<input checked="" type="checkbox"/>		
MATERIAL	<input checked="" type="checkbox"/>	
WORK	<input checked="" type="checkbox"/>	
FINISHES	<input checked="" type="checkbox"/>	
PAINTS	<input checked="" type="checkbox"/>	
INSTALLATION	<input checked="" type="checkbox"/>	
OPERATION	<input checked="" type="checkbox"/>	
MAINTENANCE	<input checked="" type="checkbox"/>	

TOLERANCES ARE IN INCHES  
 UNLESS OTHERWISE SPECIFIED  
 DIMENSIONS ARE TO FACE UNLESS NOTED OTHERWISE

DESIGNED BY	DATE
DRN	
CHECKED BY	DATE
PK	
APP'D BY	DATE
PK	
DATE	

**HARRIS**

TRITON DRFM  
 HORN ANTENNA,  
 ORION FACILITY

REV	DESCRIPTION	DATE	APPROVED
D	24930		A
			1

SCALE: NONE