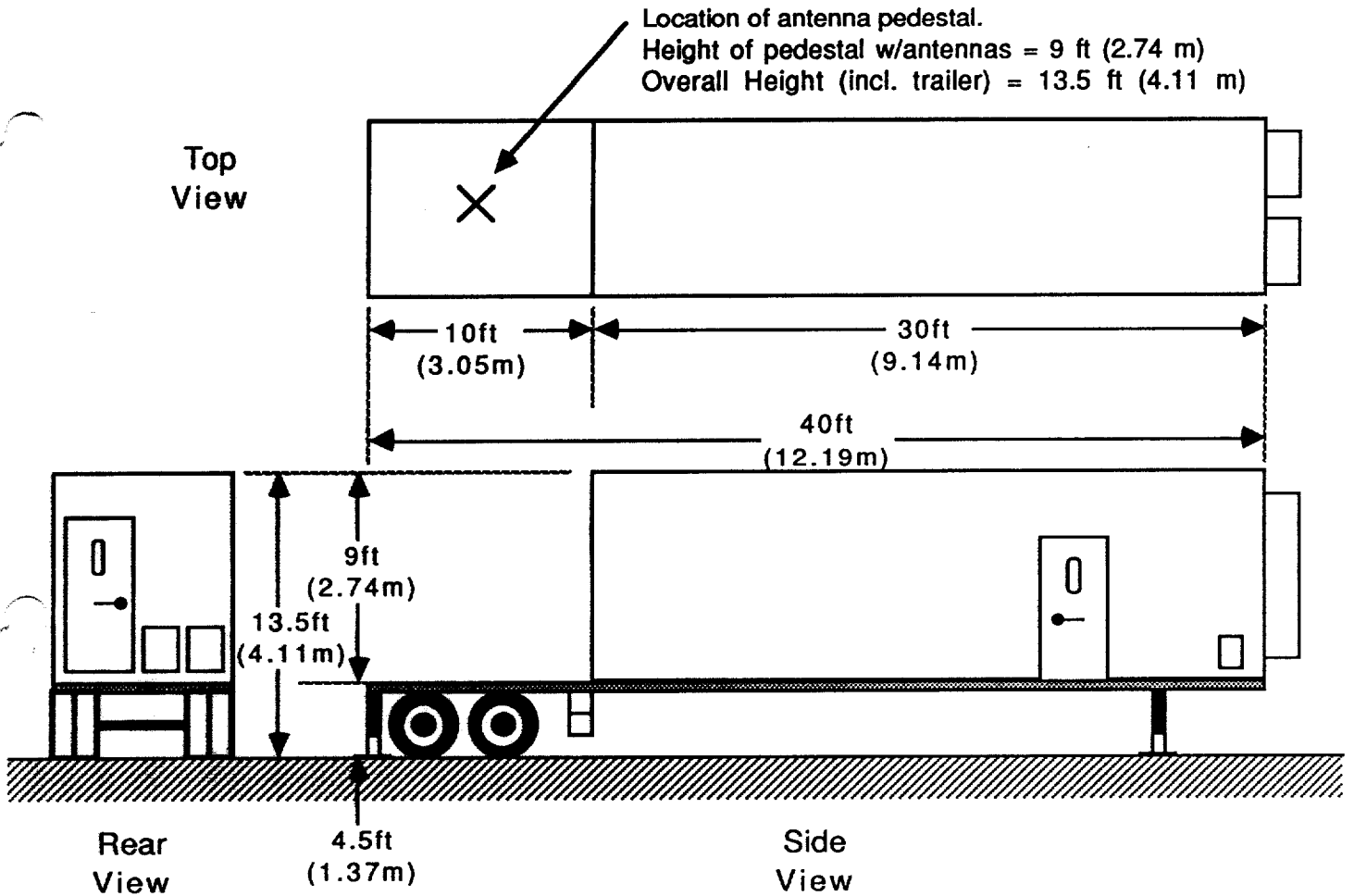
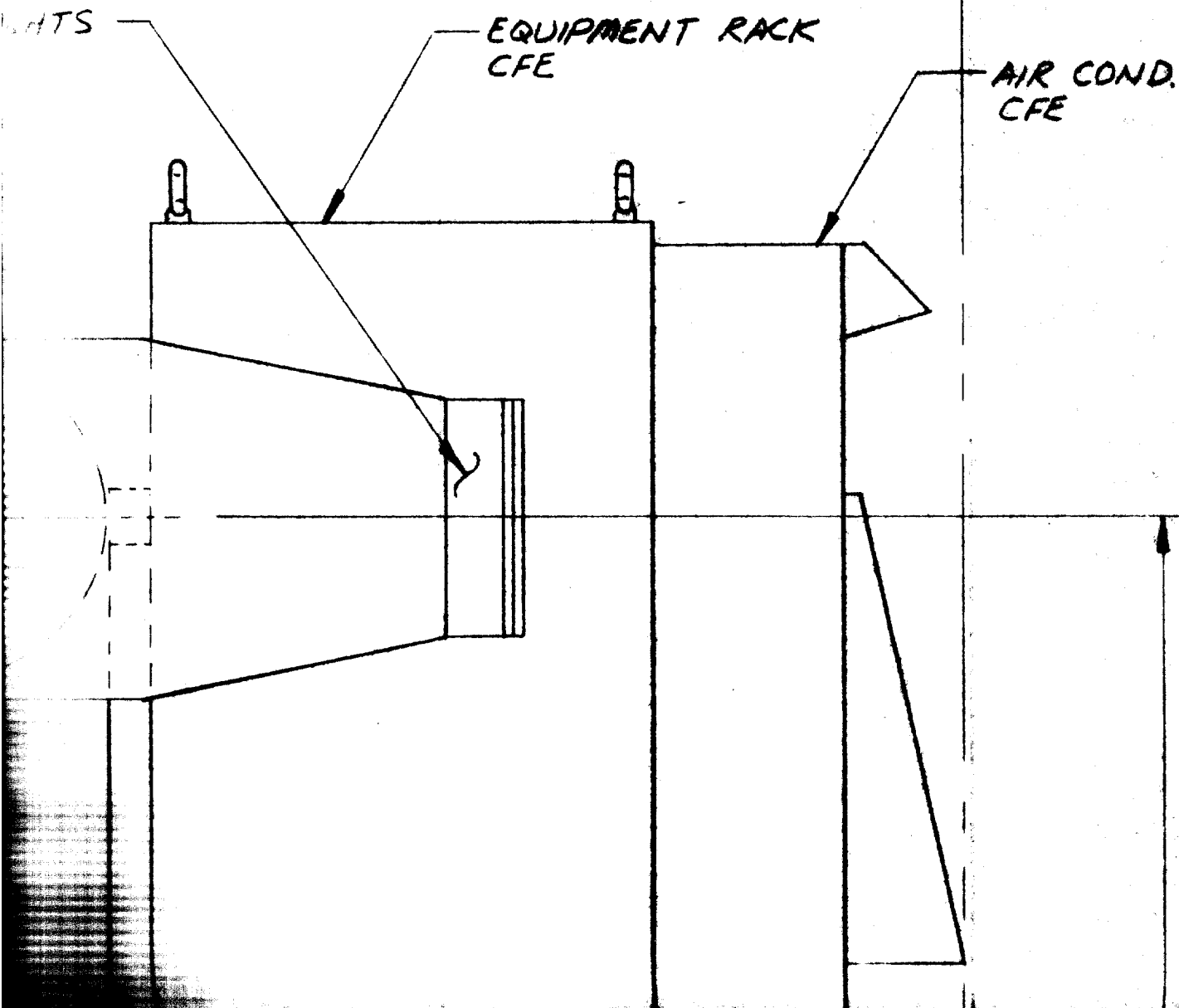


**EXHIBIT NO. 2a**

Shown below is a drawing of the GTAMS trailer. A detailed description of the configuration is given in Exhibit No. 1. This drawing is provided to show the dimensions of the supporting structure that the antenna pedestal will be mounted to. The pedestal with antenna array is shown in Exhibit No. 2b. The pedestal will be mounted in the center of the flatbed area (approximately), bolted to the frame of the trailer.



REVISIONS				
ZONE	LTR	DESCRIPTION	DATE	APPROVED



D

C

58.0"  
(1.47 m)

18.0"  
(0.46 m)

PEDESTAL ASSY.  
PG-2503

96" FLATBED WIDTH  
(2.44 m)

FEB 24 1988

PERFORMANCE, SEE SEPARATE DATA SHEET

B  
REV.  
055479

PART OR IDENTIFYING NO.

NOMENCLATURE OR DESCRIPTION

PARTS LIST

CONTRACT NO.

ROTATING PRECISION MECHANISMS, INC. 

APPROVALS

DATE

DRAWN H. MATSUMURA  
CHECKED

1-12-88

MOUNTING & OUTLINE DWG  
ANTENNA POSITIONING SYSTEM  
PG-2503/CD-2009

SIZE

CODE IDENT NO.

DRAWING NO.

REV.

D

54547

90158

SCALE 1/8" = 1" NOTED

SHEET 1 OF 1

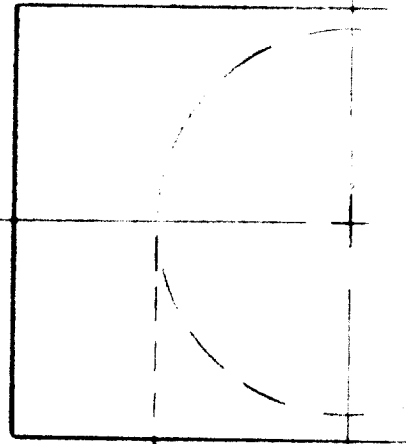
A

4

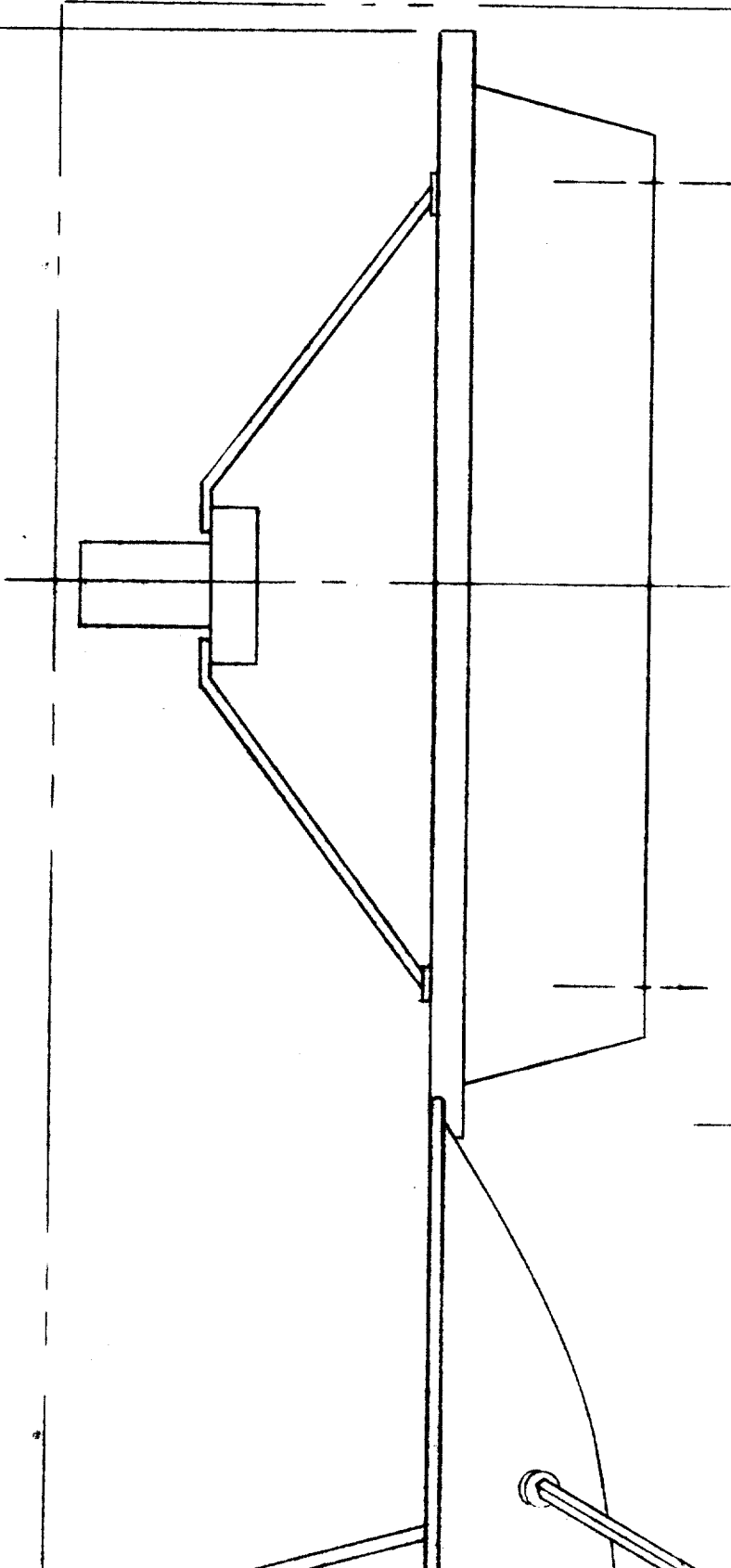
3

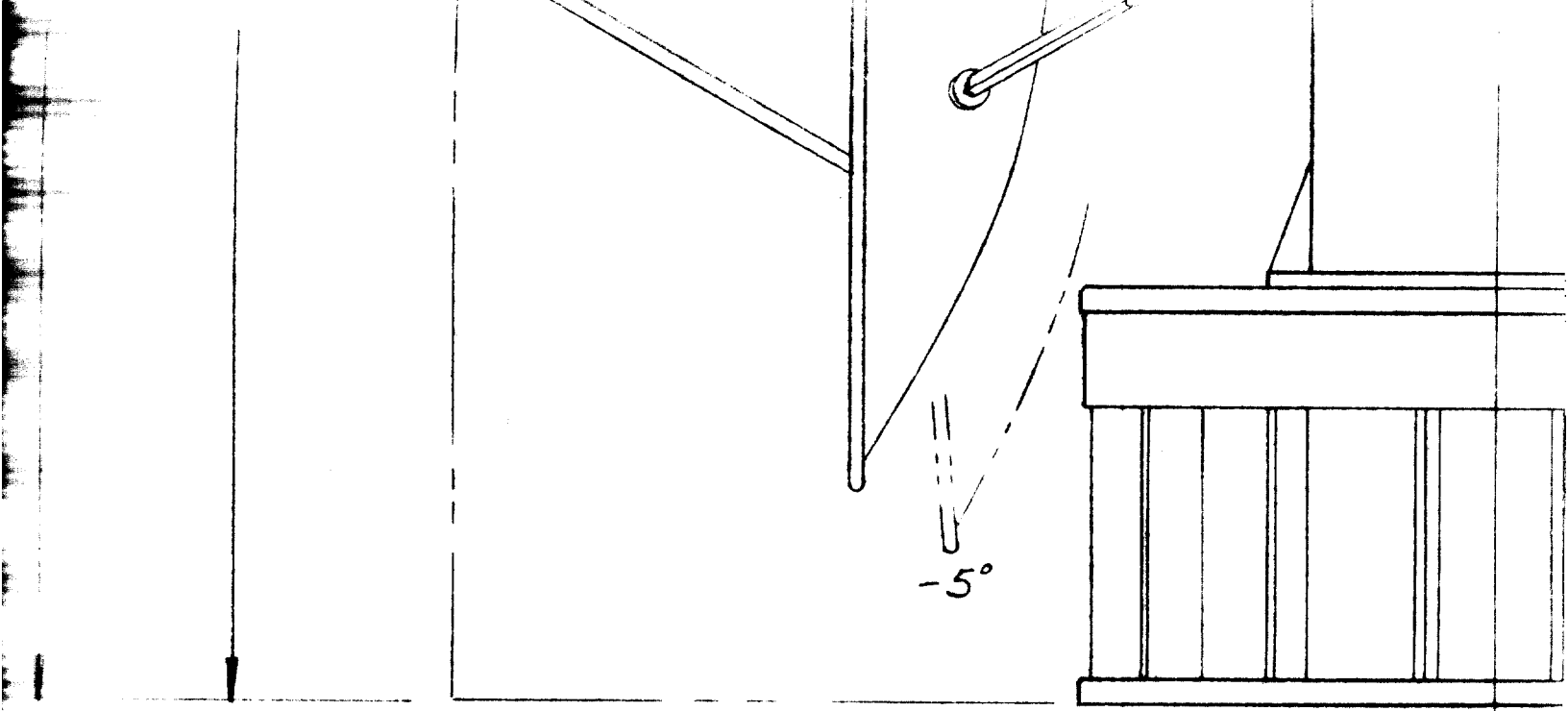
107"  
(2.72 m)

COUNTERWEIGHT  
AS REQUIRED



38  
X  
57/100





4A

CONTROLLER ASSY.  
KD-2009

FOR PERFECT

ITEM NO.	-1	-2	-3	CODE IDENT
	QTY REQD			

UNLESS OTHERWISE SPECIFIED  
DIMENSIONS ARE IN INCHES  
TOLERANCES ARE:

FRACTIONS	ANGLES	DECIMALS
±	.5	X .10
		XX .03
		XXX .010

DASH NO.	NEXT ASSY	USED ON
	APPLICATION	

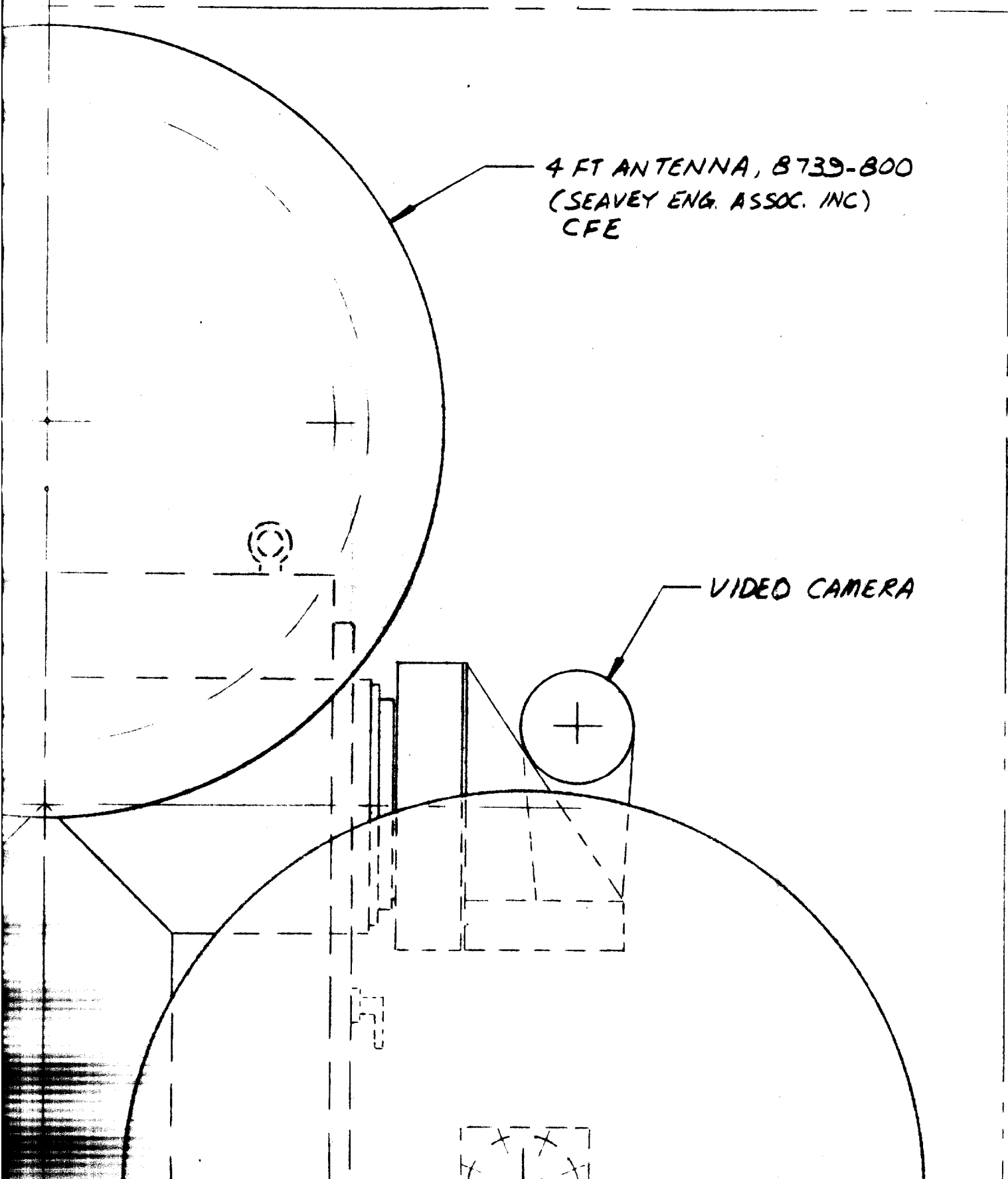
MATERIAL

FINISH

DO NOT SCALE DRAWING

4

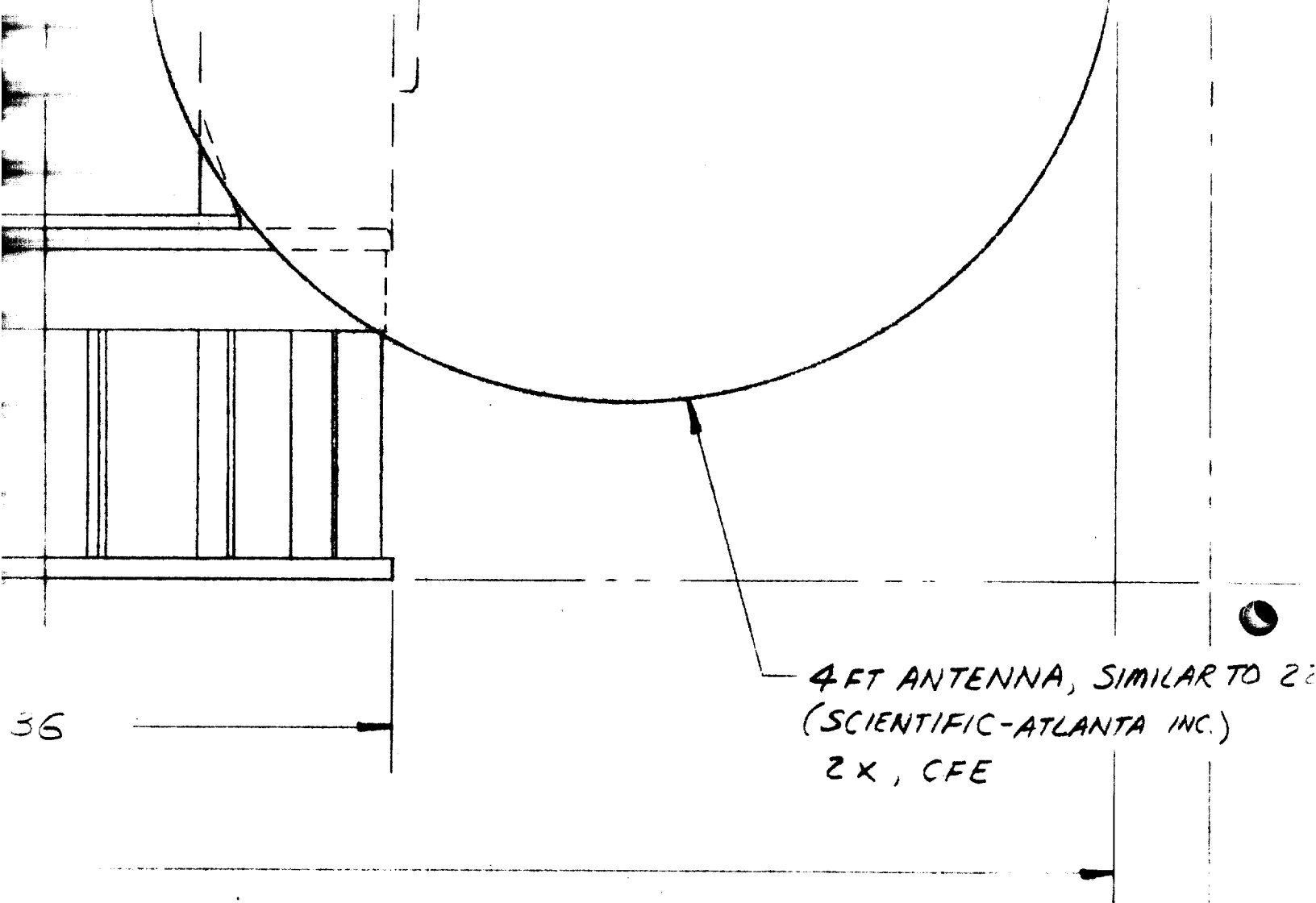
3



4 FT ANTENNA, B739-800  
(SEAVEY ENG. ASSOC. INC)  
CFE

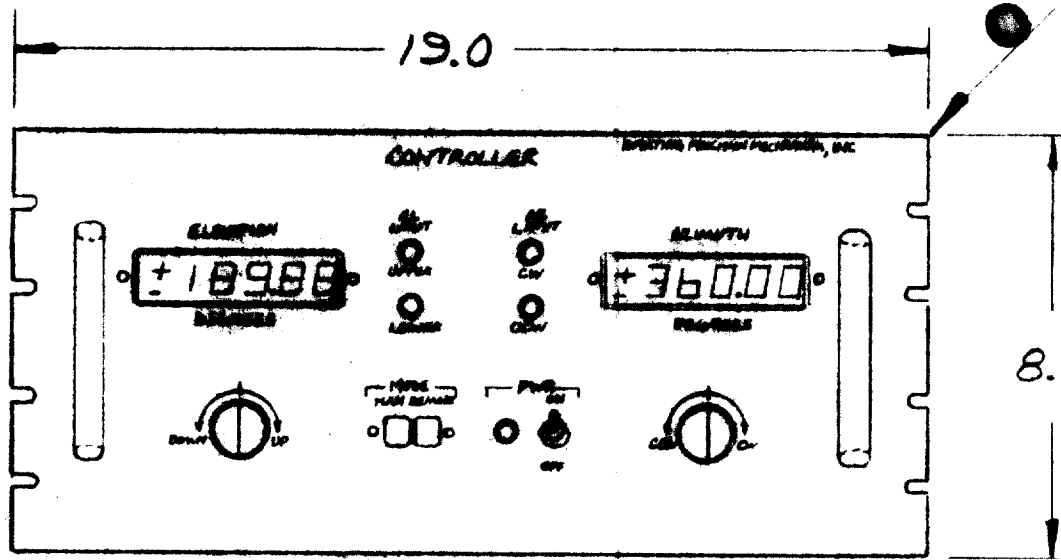
VIDEO CAMERA





4 FT ANTENNA, SIMILAR TO 2:  
 (SCIENTIFIC-ATLANTA INC.)  
 2 X, CFE

FLATBED DEPTH  
 (5 m)



(1/4 SCALE)

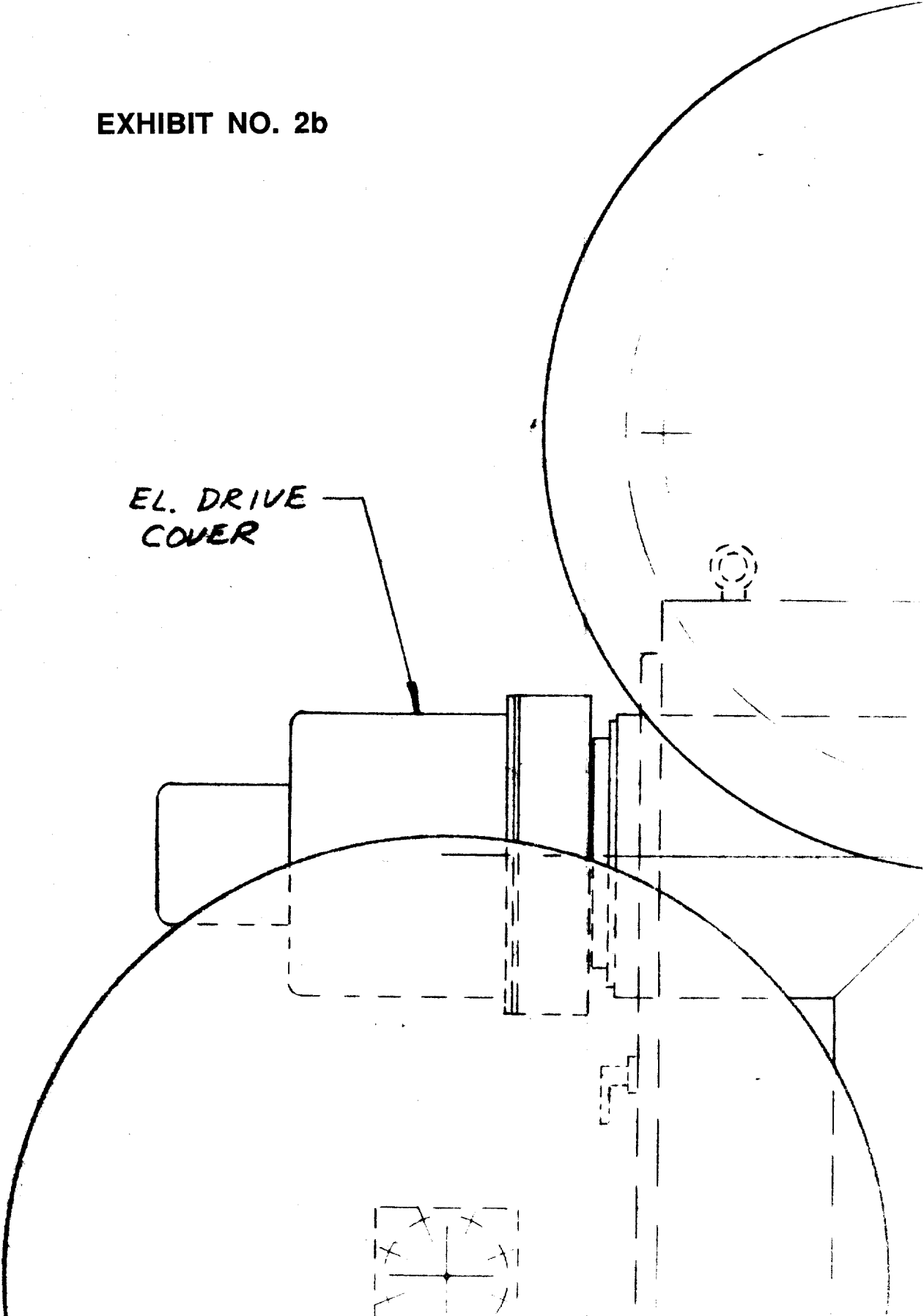
6

5

THE INFORMATION DISCLOSED HEREIN IS THE PROPERTY OF ROTATING PRECISION MECHANISMS, INC. EXCEPT FOR USES EXPRESSLY GRANTED TO THE UNITED STATES GOVERNMENT. RPM RESERVES ALL PATENT, PROPRIETARY, DESIGN USE, SALE, MANUFACTURING AND REPRODUCTION RIGHTS THERETO.

EXHIBIT NO. 2b

EL. DRIVE  
COVER



D

C

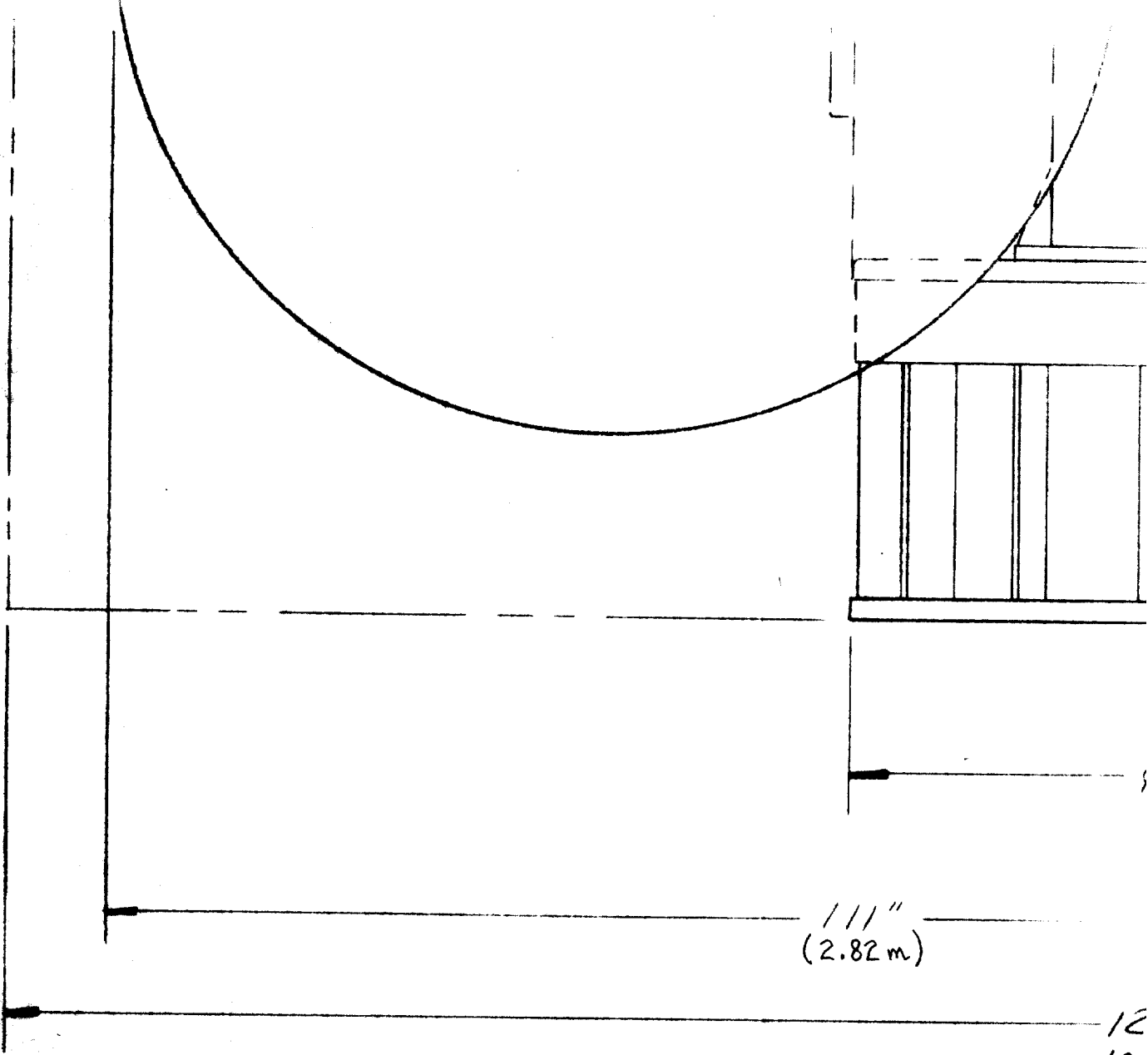


B

C

C

A



111"  
(2.82 m)

12  
(3.