

**Directional Antenna Information**

Width of Beam at Half Power point: 90 degrees  
Orientation in Horizontal Plane: Various azimuth pointing angles  
Orientation in Vertical Plane: 10 degrees up from horizon

Free Shipping | 30 Day Money Back

My Account (0) USA

Wilson Amplifiers

Search by keyword or SKU #

1-844-752-6209 Mo-Fri, 8AM - 6PM CST

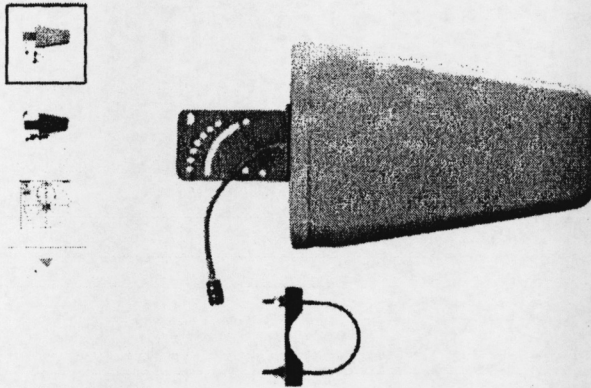
ENTERPRISE SOLUTIONS FOR SMALL BUSINESS FOR HOME FOR VEHICLES ANTENNAS & PARTS SPECIALS SUPPORT

Home > Antennas & Parts > Building Outdoor Antennas > Wilson Yagi Directional Antenna, Wide Band, 50ohm - 314411

Wilson Yagi Directional Antenna, Wide Band, 50ohm - 314411



IN STOCK. SHIPS TODAY IF ORDER PLACED BEFORE 3PM CST.



- Outdoor directional 3G & 4G antenna.
- Works with all 50 Ohm signal boosters.
- Weather resistant.
- Most popular rooftop antenna.
- Up to +10.6 dB gain.

\$63.<sup>18</sup> ~~\$99.<sup>95</sup>~~

No tax for orders outside Texas.

1 Add to Cart

[+] LARGER VIEW

- FREE STANDARD SHIPPING | 30 DAY MONEY BACK GUARANTEE

Standard Shipping is FREE for all items within the contiguous 48 states. Small fee to Alaska, Hawaii, and US Territories. No sales tax for states outside Texas.

Expedited & Next Day Shipping available.

30-day Return Guarantee. Simply contact us at 1-844-752-6209 or sales@wilsonamplifiers.com to start the process.

+ 2 YEAR MANUFACTURER'S WARRANTY

+ SECURE PAYMENT OPTIONS

Product Details

Overview

Kit Includes

Coverage Area & Specs

Installation (Videos)

OVERVIEW

No more annoying dropped calls, poor call quality & slow Internet!

The Wilson Outside Yagi Directional Antenna (50 Ohm) from Wilson Electronics is an outdoor wideband antenna upgrade or replacement for your Wilson weBoost cell phone signal booster.

- Outdoor directional 3G & 4G antenna.
- Works with all 50 Ohm signal boosters.
- Weather resistant.
- Most popular rooftop antenna.
- Up to +10.6 dB gain.

The Wilson Yagi Directional Antenna is a 50 Ohm outdoor mounted antenna used to pull in existing 3G & 4G LTE signals from your nearest cell tower source. It's features up to +10.6 dB gain.

Designed for fixed building installations outside a home, office, or commercial space.

Backed by a 2-year manufacturer warranty, 24-hour US-based customer support (Texas), 30-day better signal or money back guarantee, and lifetime technical support.

Goodbye, no-signal frustrations.



Compatible Accessories (5)

< >