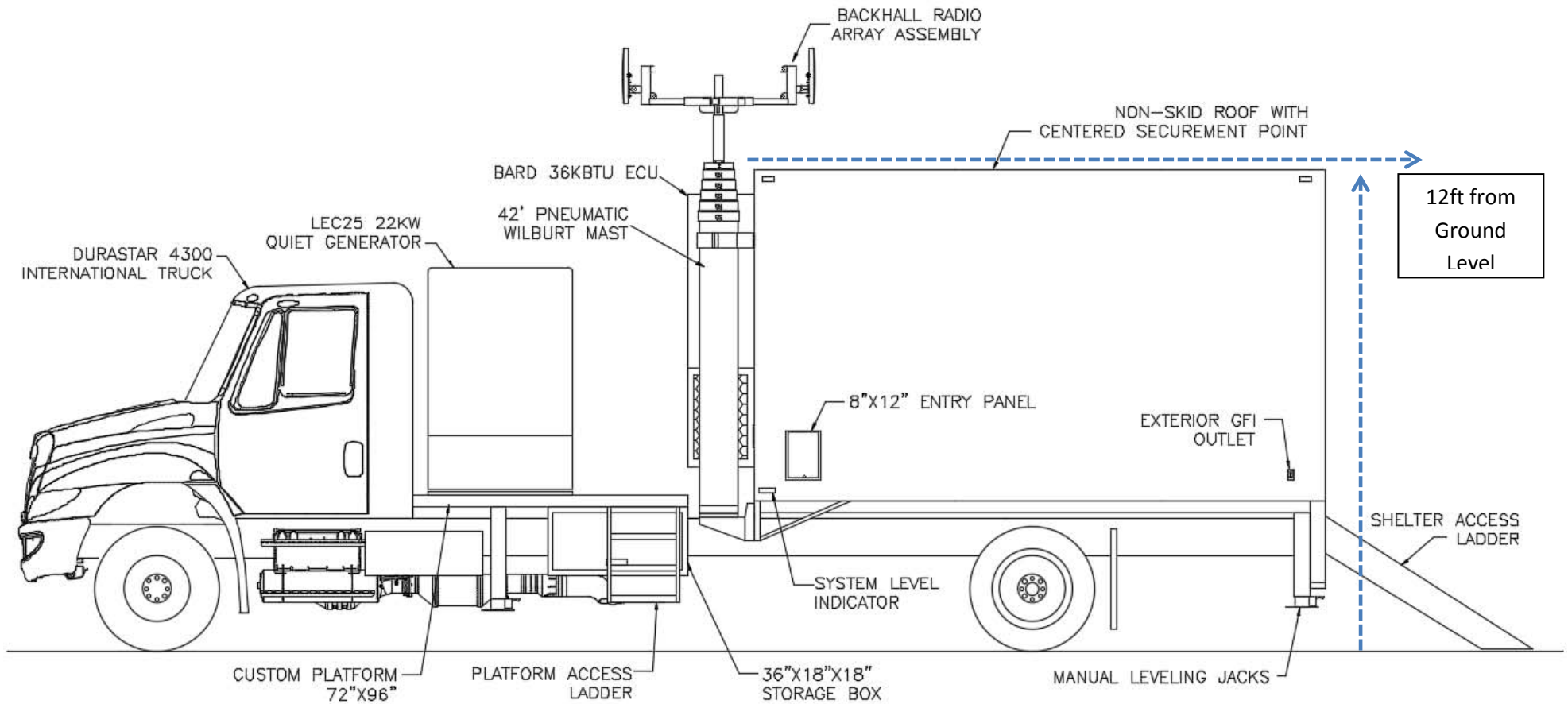


Brief description and purpose of Demo/Testing to be performed (Narrative Statement)

Test the Synthetic Battlefield Emitter System (SBES) suite radio communications. The SBES suite is comprised of one Central Node and six Remote Nodes. The Central Node has four transceivers which communicate with the up to six transceivers installed in each Remote Node respectively. These transceivers enable command and control of Remote Nodes and transfer of System Health and Status messages among the SBES suite.

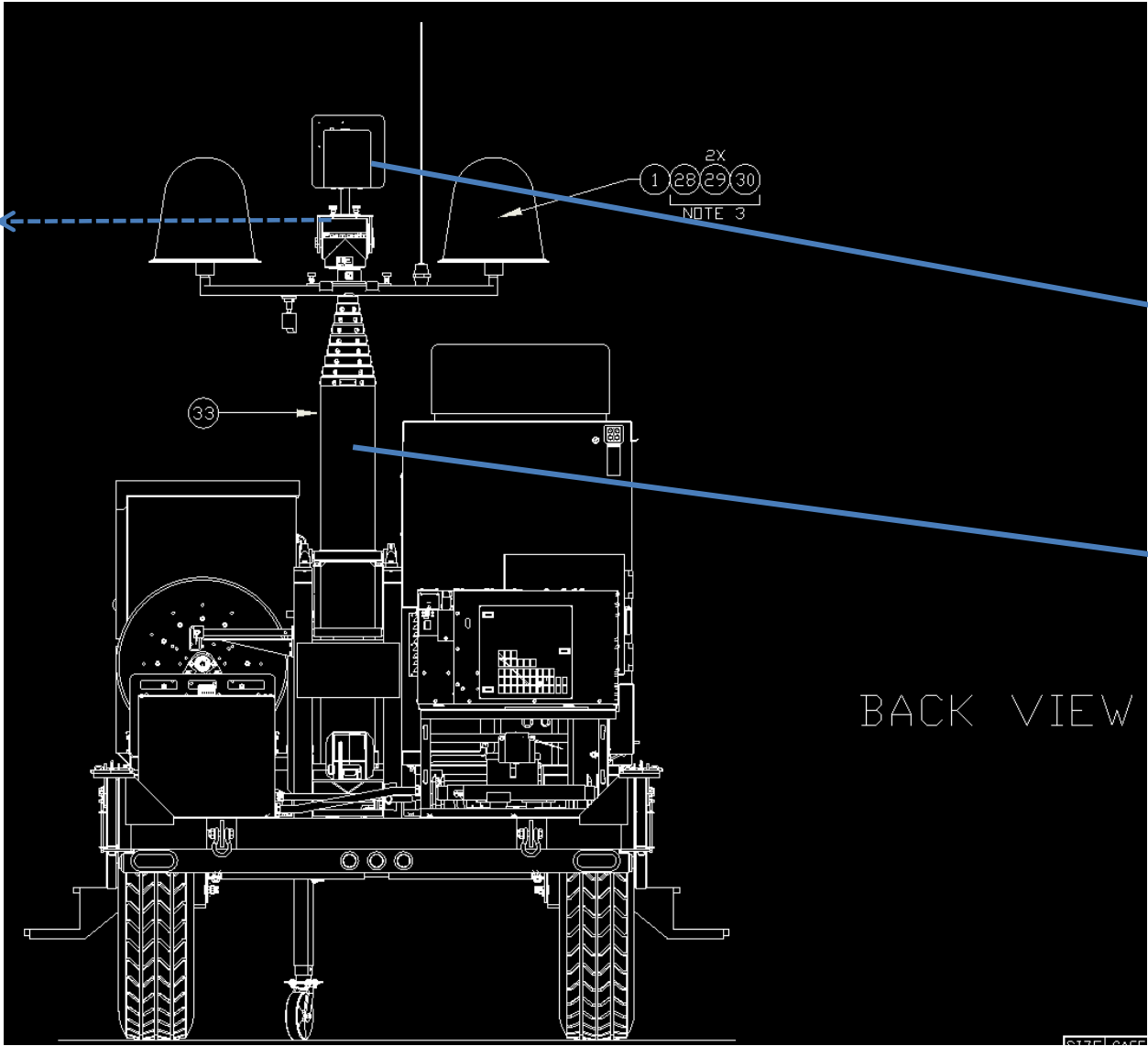
CENTRAL NODE



ROADSIDE VIEW

REMOTE NODE

12ft from
Ground
Level



Backhaul Radio
(Subscriber Unit)

42ft Pneumatic
Wil-Burt Mast

BACK VIEW