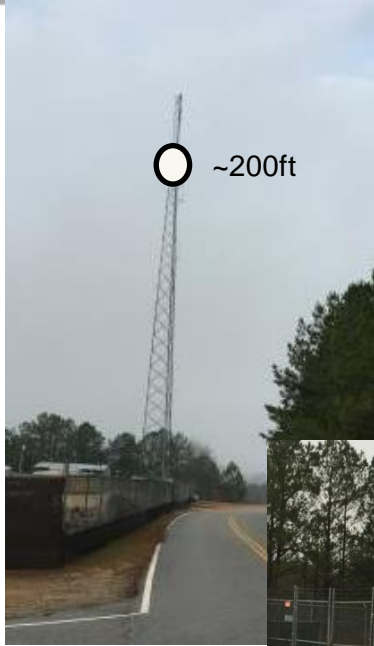
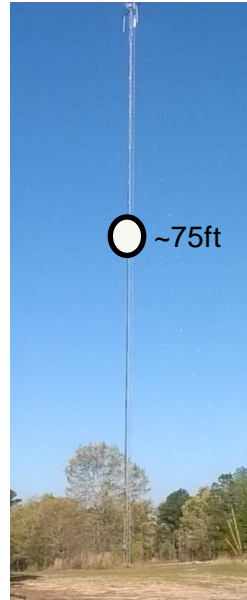


# Desired Antenna placement on towers



LTE equipment and Antenna Mount options  
One per sector antenna



Ground Elevation: 120m  
(0.4km from airstrip)

**Lafayette Tower -150ft**

ROHN 45 – Antenna pointed at 90 degs  
Ground Elevation:166m (6 km from airstrip)

Ground Elevation: 186m  
(13km from airstrip)

**Camp Darby Tower–150ft**

Antenna pointed at 315 degs and antenna 130ft above ground.

**McKenna Tower – 250ft**  
Antennas pointed at 345