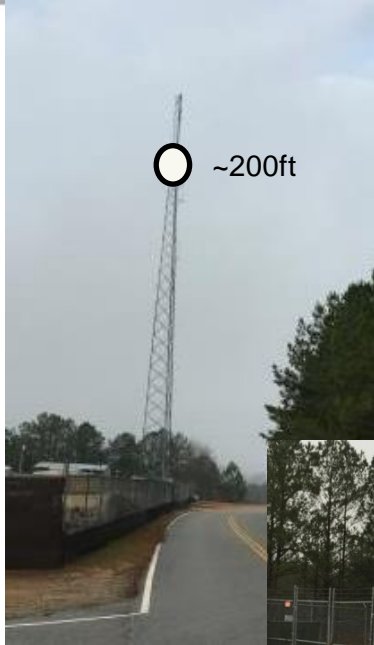
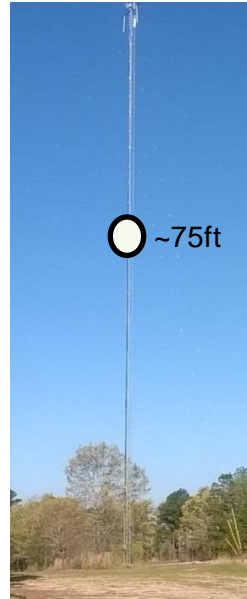


Desired Antenna placement on towers



LTE equipment and Antenna Mount options
One per sector antenna



Ground Elevation: 120m
(0.4km from airstrip)

Lafayette Tower -150ft

ROHN 45 – Antenna pointed at 90 degs
Ground Elevation:166m (6 km from airstrip)

Ground Elevation: 186m
(13km from airstrip)

Camp Darby Tower–150ft

Antenna pointed at 315 degs and antenna 130ft above ground.

McKenna Tower – 250ft
Antennas pointed at 345