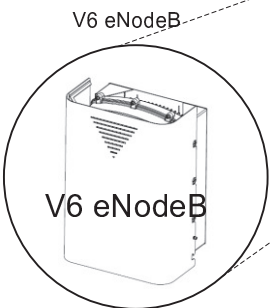


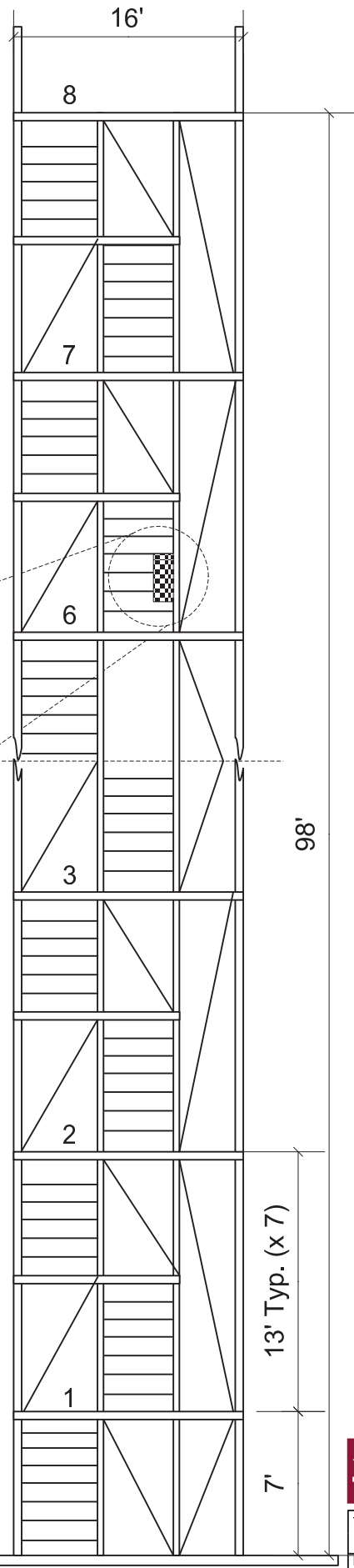
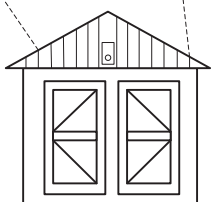
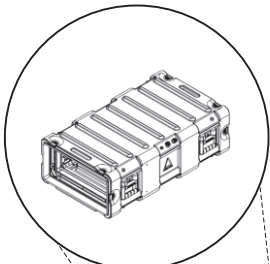
UNCLASSIFIED - FOUO

Tower platform elevation estimates.

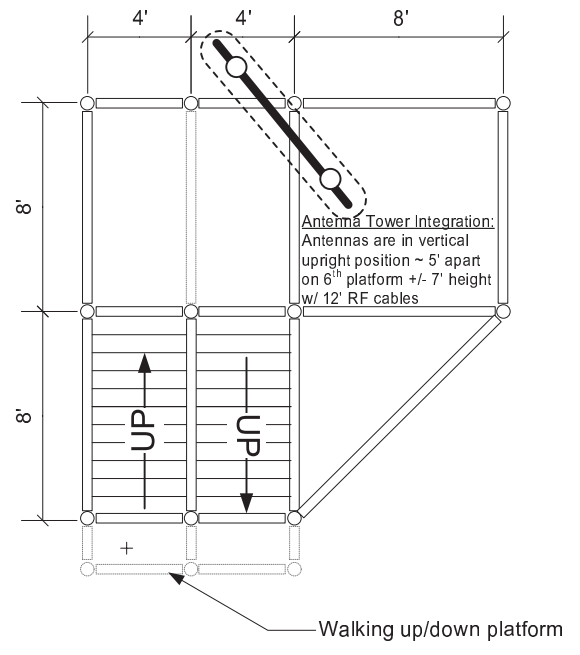
- 1 = 7'
- 2 = 20'
- 3 = 33'
- 4 = 46'
- 5 = 59'
- 6 = 72'
- 7 = 85'
- 8 = 98'



120VAC UPS and DC Power Supply



Tower – (Top View) w/antenna detail



v6 e-NodeB integration requirements:

- Antennas required to be at 75' from ground.
- Antennas include:
 - (2) DB583E-SN - 5.1dBi 30° omni 698-790 MHz 400W max antenna
 - (1) Trimble 57860-20 GPS antenna kit
- Omni antennas to use 12 foot 7/16" M-M Low loss Ultraflex CA- 400UF cable
- v6 e-NodeB will use a DC lightning arrester and grounded to tower
- V6 e-NodeB will require (2) pairs of fiber, SM type is preferred
- v6 e-NodeB power supply will be housed in the shed at the base of the tower.
- The Evolved Packet Core (EPC) server will be housed remotely. Candidate location is the data center
- eNodeB will operate on Band 17 (740MHz DN / 710 MHz UP) 10 MHz channels @ 16dBW (max).

UNCLASSIFIED - FOUO



TITLE				
Phase 1:GD Broadband 4G LTE eNodeB Range 1 Tower Integration Details				
Revision notes since last update: Location/height of eNodeB changed due to physical limitations on the tower Antennas will use longer cables to allow high variability if needed.				Rev.
				0.1
DRAWN BY	DATE	UPDATED BY	UPDATED	Sheet
GLENN A. BRICENO	3/25/2014	GLENN A. BRICENO	4/17/2014	1