

# *Usery Pass Antenna Site*

*Mesa AZ*

The Usery Pass commercial antenna towers are located in Mesa, Arizona at 33 29' 33.55650" North Latitude and 111 38' 26.07557" West Longitude. The site sits on Usery Mountain at an elevation of 2476' (754 meters) and approximately 1250' (381m) above the City of Mesa.



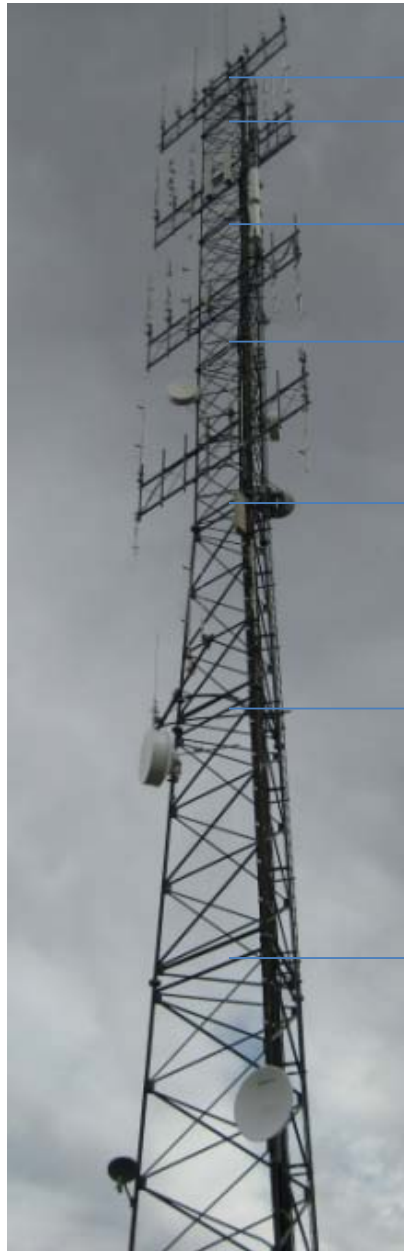
## Antenna Registration Question 5: Antenna Drawing

The antenna would be side mounted on the East side of the LMR tower which is to the left. Both of the Usery Pass towers are approximately 150 feet (45.72 m) high. The antenna would be installed almost one third of the way up the LMR tower at a height of approximately 40 feet (12.2 m).



*Antenna to be installed  
on East side of LMR  
tower at approx. 40'  
(12.2 m)*

# Antenna Registration Question 5: Antenna Drawing



150 feet (45.7 m) Top of Tower Structure

140 feet (42.7 m)

120 feet (36.6 m)

100 feet (30.5 m)

80 feet (24.4 m)

60 feet (18.3 m)

40 feet (12.2 m)  
Proposed Installation  
Elevation – Far Leg

## Existing Antenna Systems on Proposed Installation Tower

10 ft (3.1 m): 1 Satellite Dish

19 ft (5.8 m): 1 Satellite Dish

30 ft (9.1 m): 3 Microwave Dishes

58 ft (17.7 m): 1 Microwave Dish

60 ft (18.3 m): 1 Whip Antenna

80 ft (24.4 m): 1 Microwave Dish

85 ft (25.9 m): LMR Panel,  
1 Microwave Dish

95 ft (29.0 m): 2 Microwave Dishes

105 ft (32.0 m): LMR Panel

125 ft (38.1 m): LMR Panel

145 ft (44.2 m): LMR Panel

Proposed Sensor is to be installed at 40 feet elevation (12.2 meters), on far tower leg.