

A

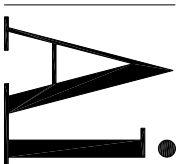
SECTION THROUGH PLATFORM
SCALE: 1/8" = 1'-0"

DATE 10/14/05

REFERENCE

GENERAL DYNAMICS

2305 MISSION COLLEGE BLVD.
SANTA CLARA, CA 95054



2100 El Street NW
Suite 800
Washington, DC 20017-2027
Telephone 202.271.4000
Facsimile 202.224.1570
www.ai.com

DRAWING TITLE

**ANTENNA PLATFORM
SECTION**

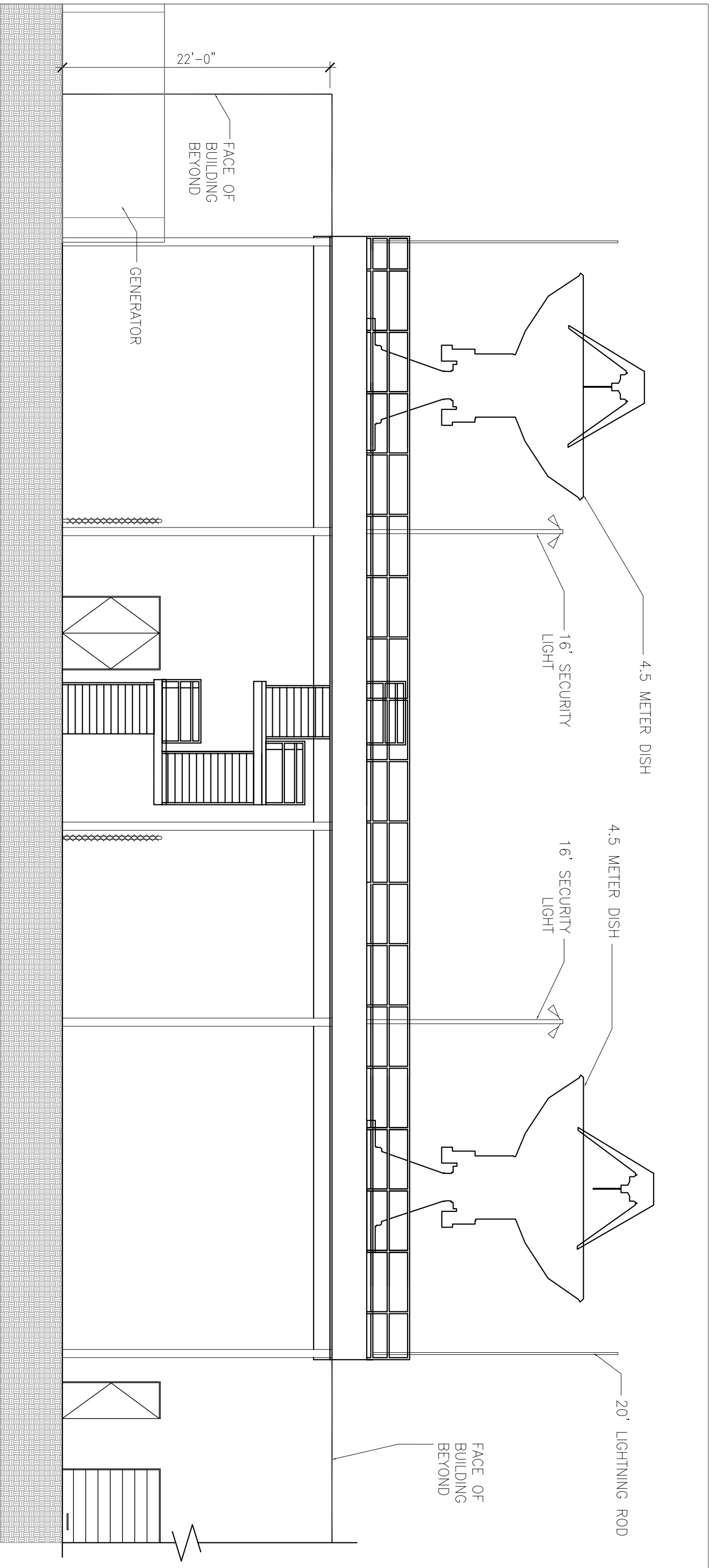
SCALE
1/8"=1'-0"

DRAWN BY
CAD

NUMBER
25000.08

SHEET

**SK-
08-02A**



B

ELEVATION OF PLATFORM
SCALE: 1/8" = 1'-0"

DATE 10/14/05

REFERENCE

GENERAL DYNAMICS

2305 MISSION COLLEGE BLVD.
SANTA CLARA, CA 95054

AI

2100 El Street NW
Suite 800
Washington, DC 20017-0207
Telephone 202.237.1000
Facsimile 202.232.1570
www.aiinfra.com

DRAWING TITLE

ANTENNA PLATFORM
ELEVATION

SCALE SHEET

1/8"=1'-0"

DRAWN BY

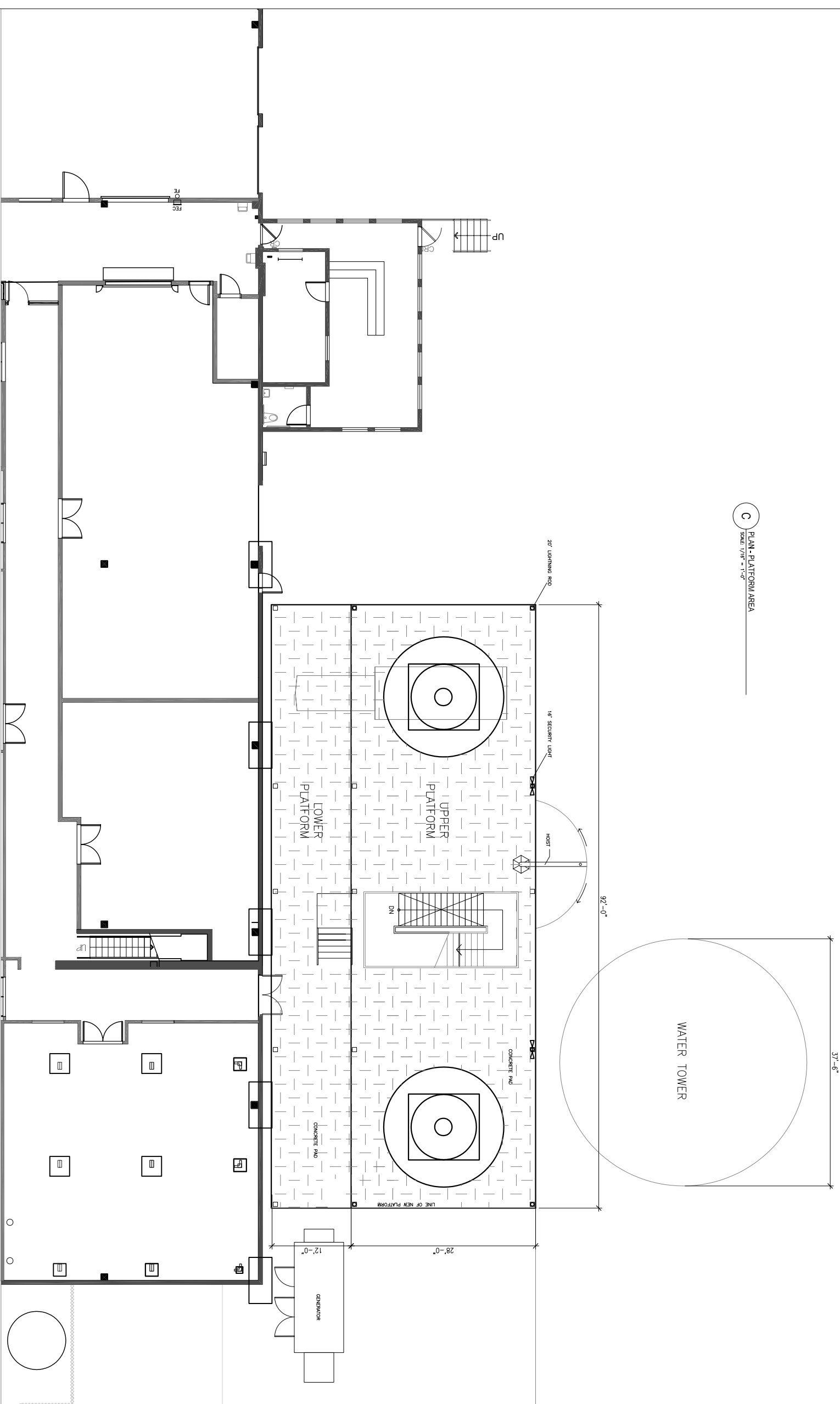
CAD

NUMBER

25000.08

SK-
08-02B

C PLAN - PLATFORM AREA
SCALE: 1/16" = 1'-0"



DATE 10/14/05

REFERENCE

DRAWING TITLE

ANTENNA PLATFORM
UPPER LEVEL PLAN

SHEET

SCALE 1/16" = 1'-0"
DRAWN BY CAD
NUMBER 25000.08

SK-08-02C

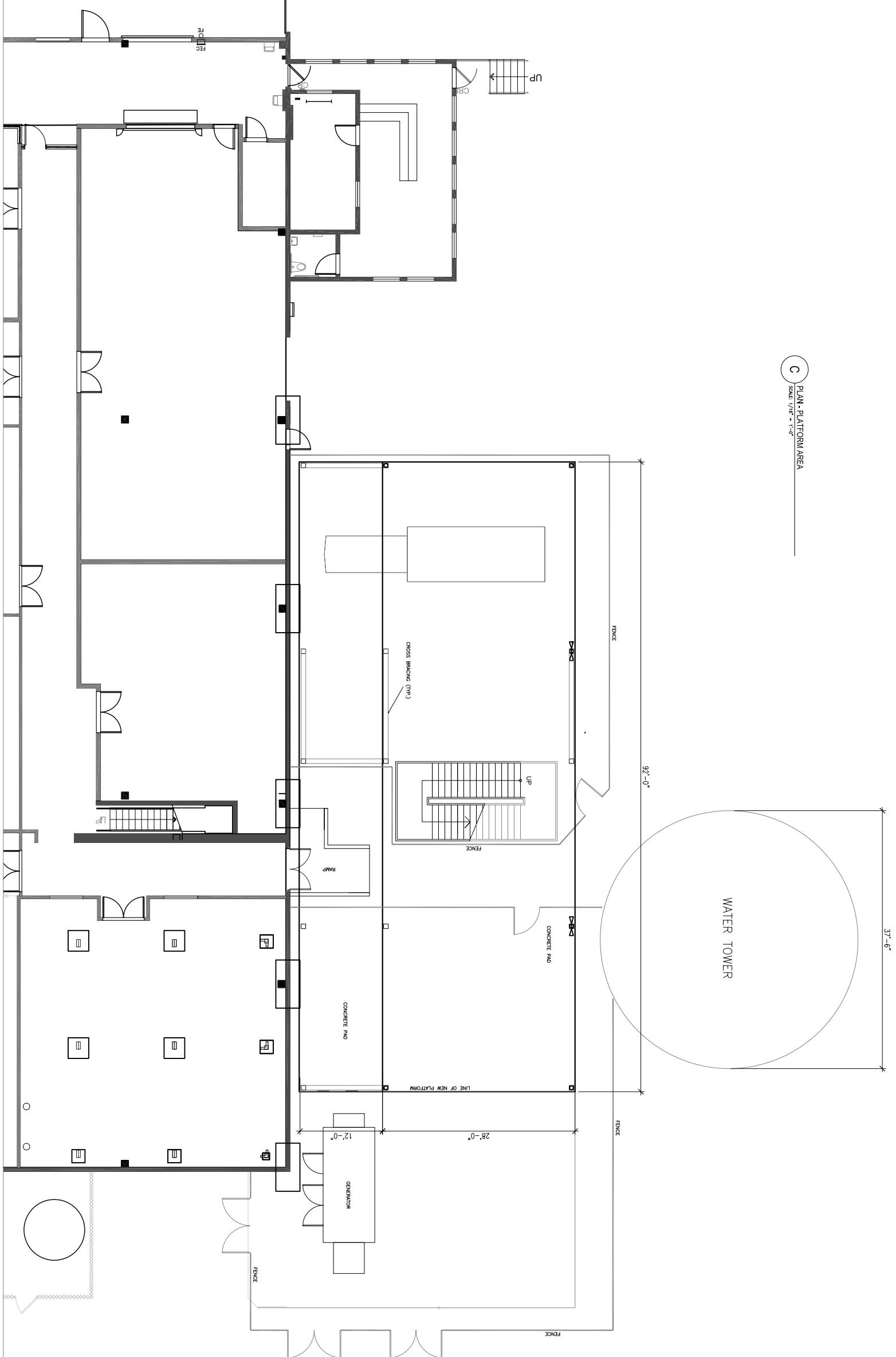
GENERAL DYNAMICS

2305 MISSION COLLEGE BLVD.
SANTA CLARA, CA 95054

AI

2100 El Street NW
Suite 800
Washington, DC 20017-2027
Telephone 202.271.1000
Facsimile 202.223.1570
www.ai-engineering.com

C PLAN - PLATFORM AREA
SCALE 1/8" = 1'-0"



DATE 8/02/05

REFERENCE

DRAWING TITLE

ANTENNA PLATFORM
LOWER LEVEL PLAN

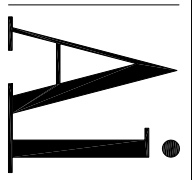
SHEET

SCALE 1/8" = 1'-0"
DRAWN BY CAD
NUMBER 25000.08

SK-08-02C

GENERAL DYNAMICS

2305 MISSION COLLEGE BLVD.
SANTA CLARA, CA 95054



2100 Elmer NW
Suite 800
Vancouver, BC V6Z 2G7
Telephone 604.271.1000
Facsimile 604.271.1570
www.ai.com