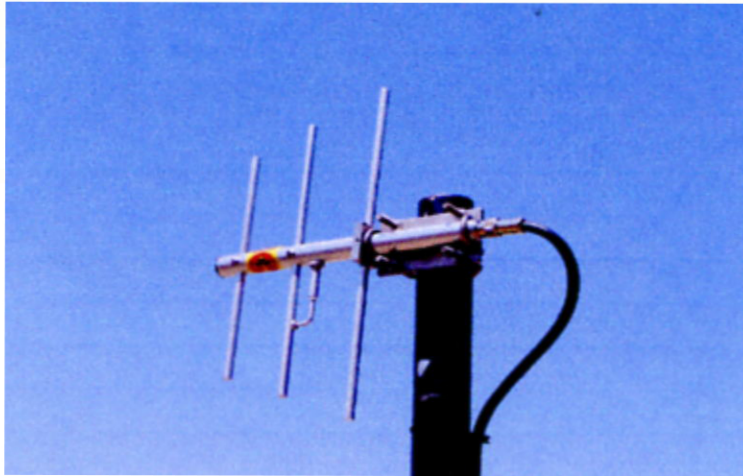
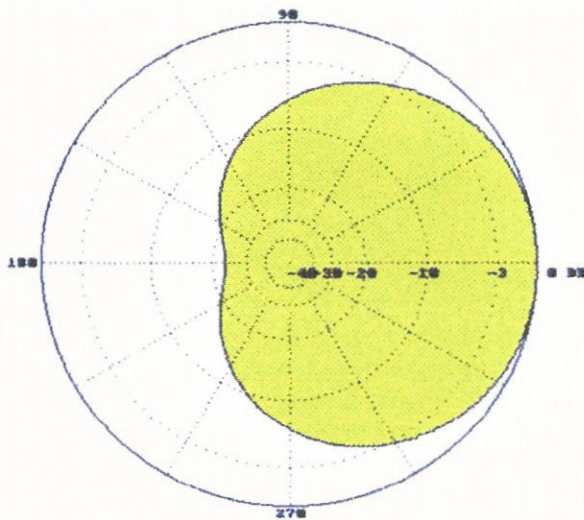


# SAMCO ANTENNAS, INC.

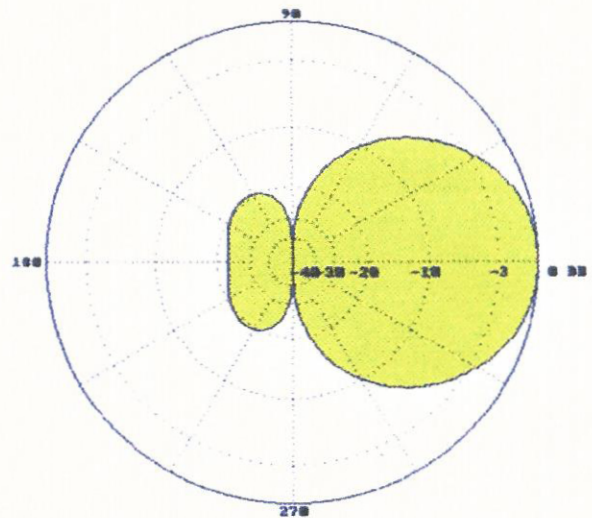


## SAM-237R Specifications

Both the E plane and the H plane shown below are normalized at 221 MHz



SAM-237R H-Plane



SAM-237R E-Plane

### ELECTRICAL DATA

Frequency ..... 216/224MHz  
Bandwidth ..... 8+ MHz  
VSWR ..... 1.5 to 1 or less  
Impedance ..... 50 ohms  
Forward Gain ..... 7 dB  
Front to Back Ratio ..... 20 db+  
Polarization ..... Vertical or Horizontal  
Lighting Protection ..... Direct Ground  
Power Handling ..... 300 Watts  
Termination ..... Type N Female

### MECHANICAL DATA

Materials ..... Aluminum  
Boom ..... 1" Reinforced Tube  
Elements ..... 3/8" Rod  
Driven Element ..... 3/8" Rod  
Wind Survival ..... 100 mph  
Standard mounting ..... V-bolts 1" to 2" pipe  
Overall length ..... 22 inches"  
Shipping Weight - Approximately 5 lbs.

**PLEASE SPECIFY FREQUENCY**