

TIP OF ANTENNAS  
TIP OF ANTENNAS  
TIP OF GPS  
TOP OF MONOPOLE

MAGNETIC DECLINATION  
FOR THIS SITE IS  
16.7°  
FROM TRUE NORTH

154'-0" A.G.L.  
46.9392M A.G.L.  
151'-0"  
46.0248M A.G.L.  
150'-0" A.G.L.  
45.72M A.G.L.

EXISTING 150'-0" MONOPOLE

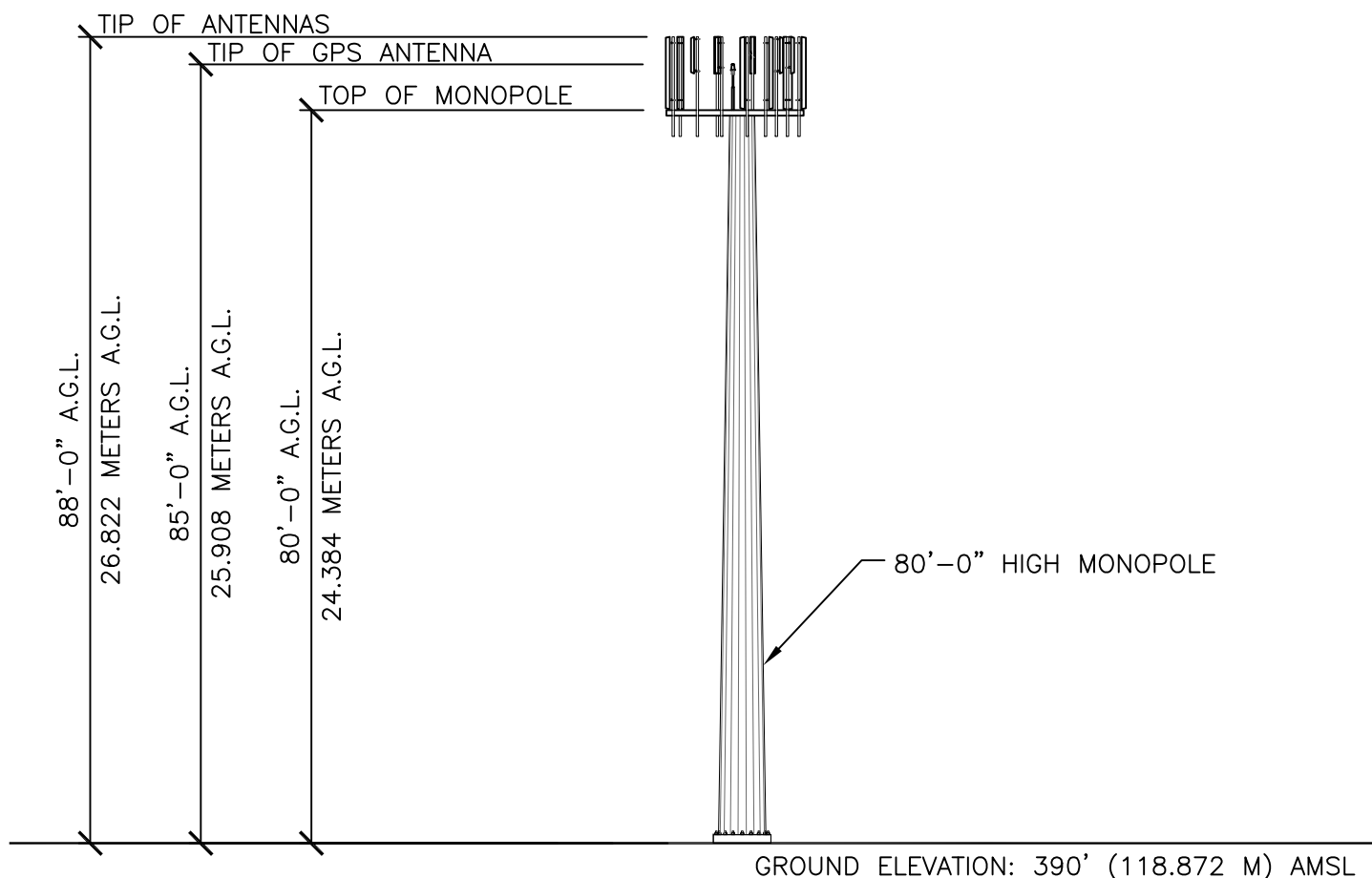
GROUND ELEVATION: 435' (132.588M) AMSL

# SOUTH ELEVATION

SCALE: 1" = 20'-0"

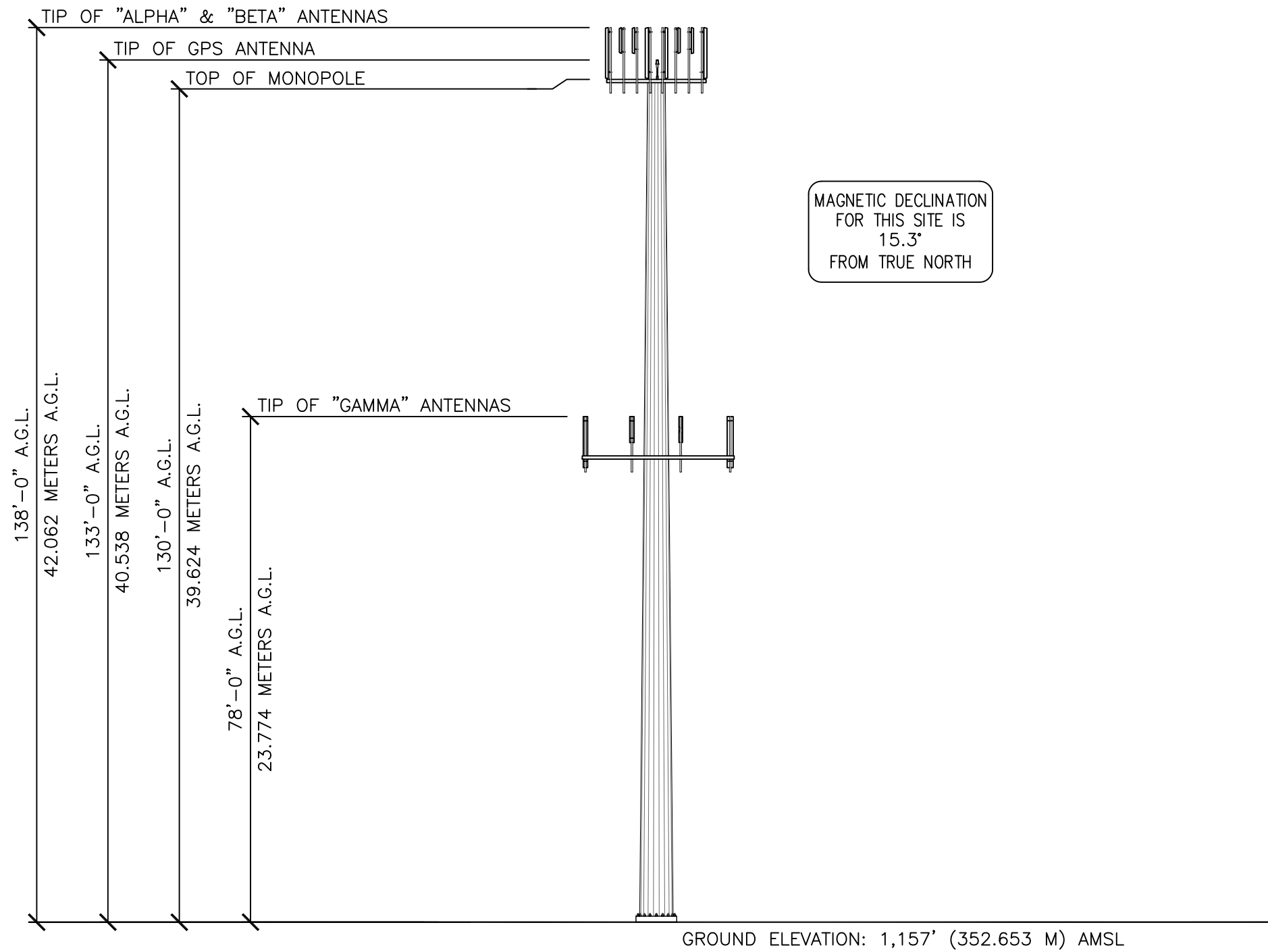
SITE: FILBERT

MAGNETIC DECLINATION  
FOR THIS SITE IS  
16.7°  
FROM TRUE NORTH



**SOUTH ELEVATION**  
SCALE: 1" = 20'-0"

**SITE: KEELER'S CORNER**



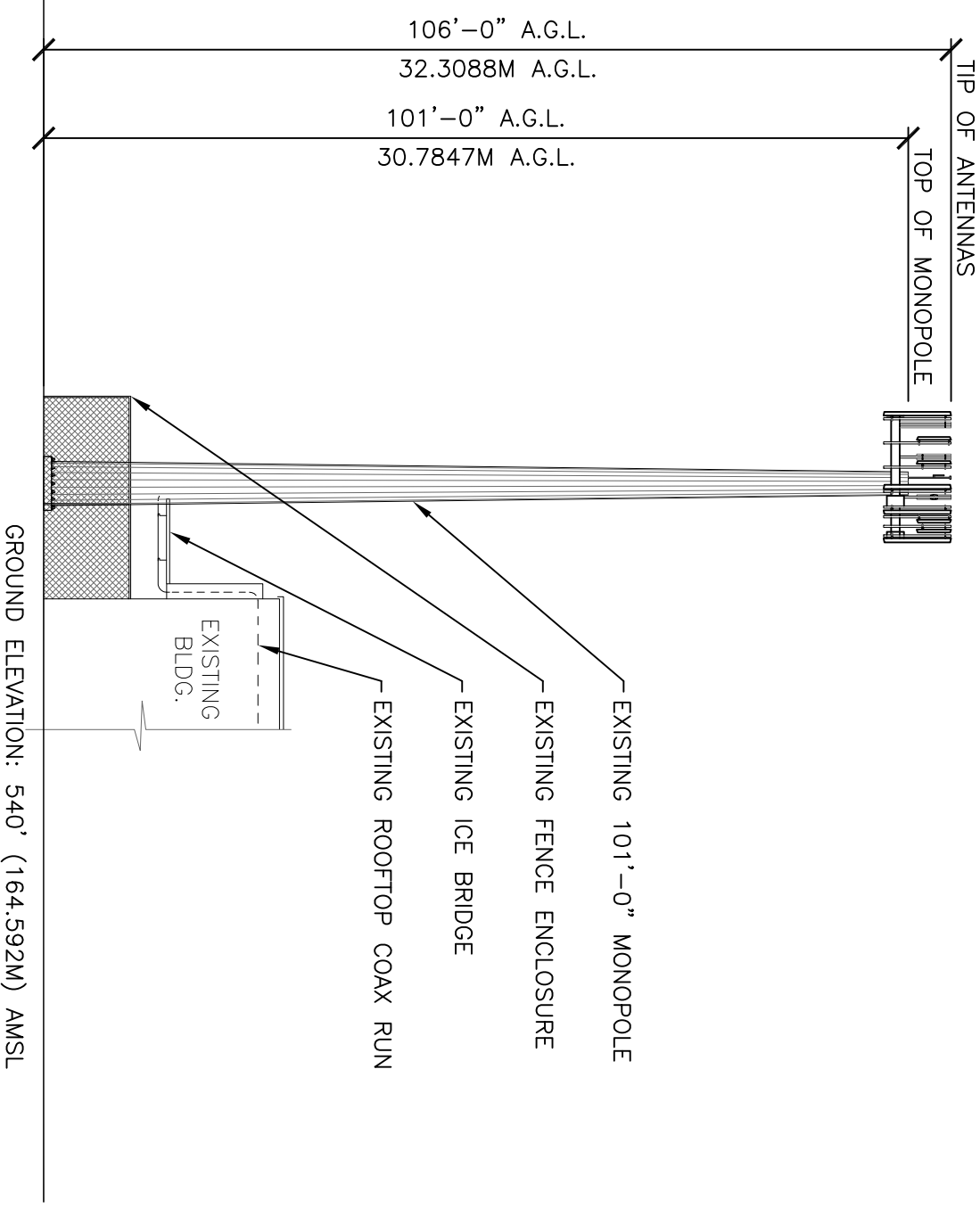
MAGNETIC DECLINATION  
FOR THIS SITE IS  
15.3°  
FROM TRUE NORTH

**NORTHEAST ELEVATION**

SCALE: 1" = 20'-0"

**SITE: MILL CREEK**

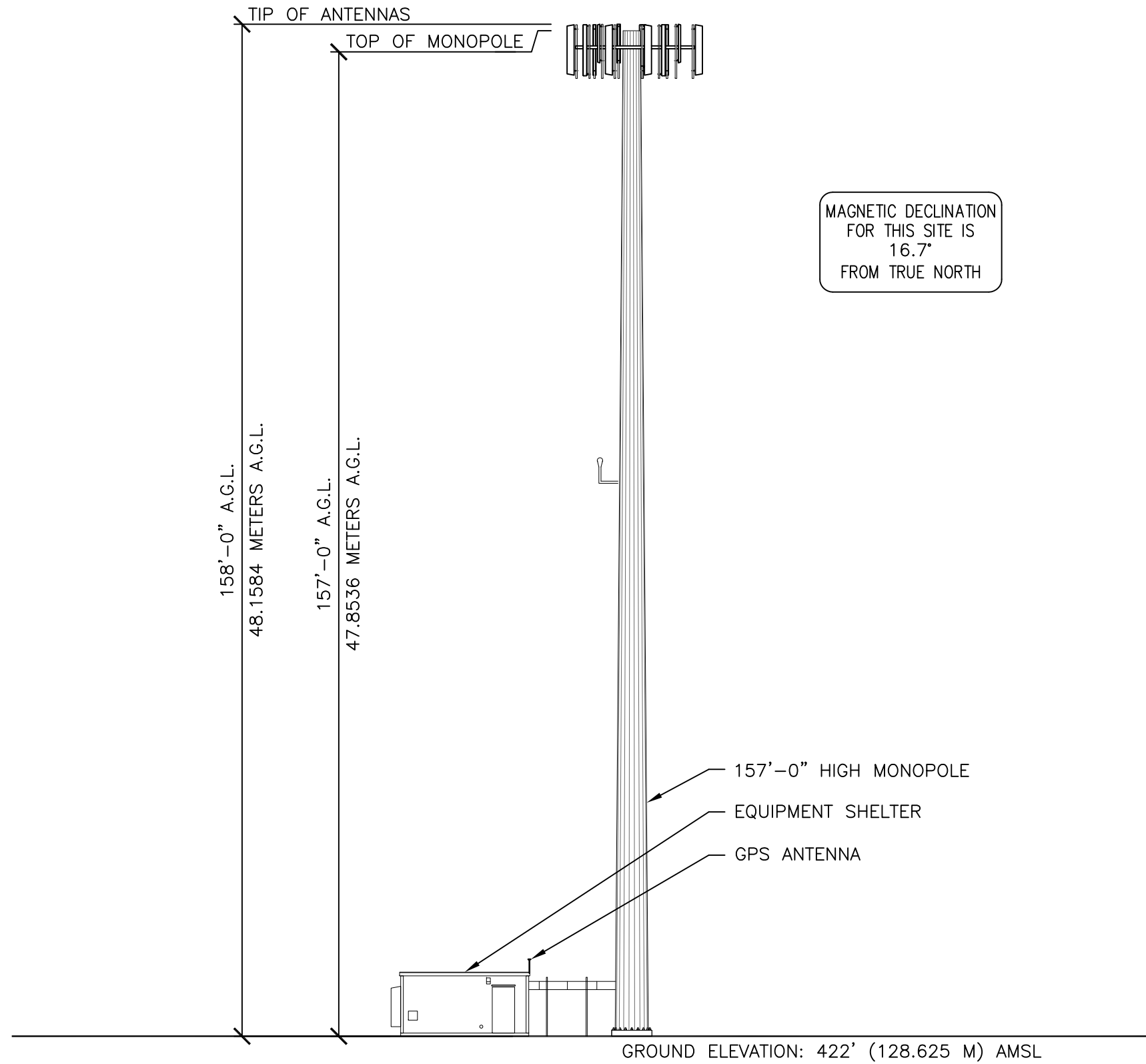
MAGNETIC DECLINATION  
FOR THIS SITE IS  
16.7°  
FROM TRUE NORTH



# SOUTH ELEVATION

SCALE: 1" = 20'-0"

# SITE: SILVER LAKE

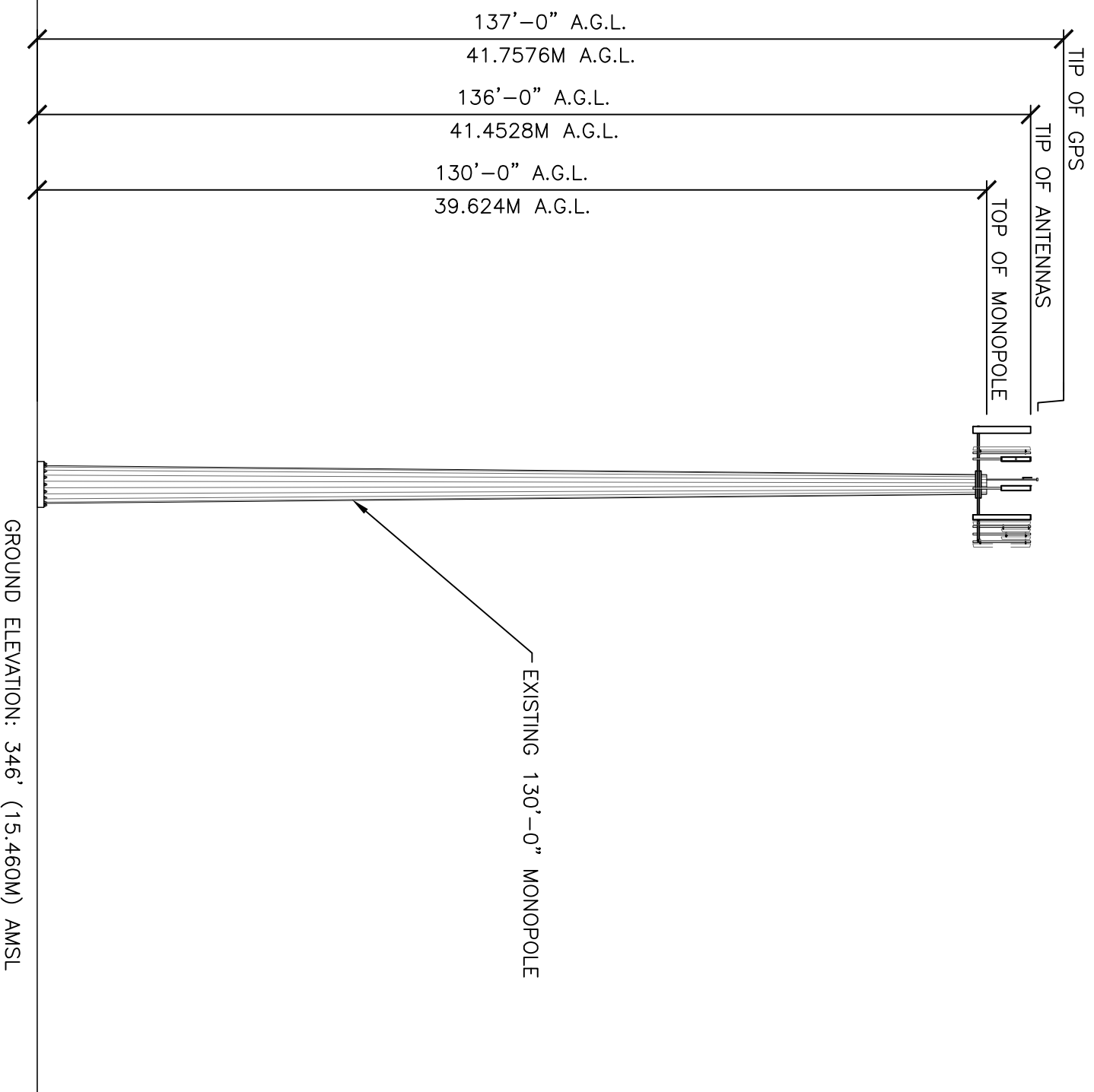


**WEST ELEVATION**

SCALE: 1" = 20'-0"

**SITE: SWAMP CREEK**

MAGNETIC DECLINATION  
FOR THIS SITE IS  
16.7°  
FROM TRUE NORTH



**EAST ELEVATION**

SCALE: 1" = 20'-0"

**SITE: THRASHER'S CORNER**