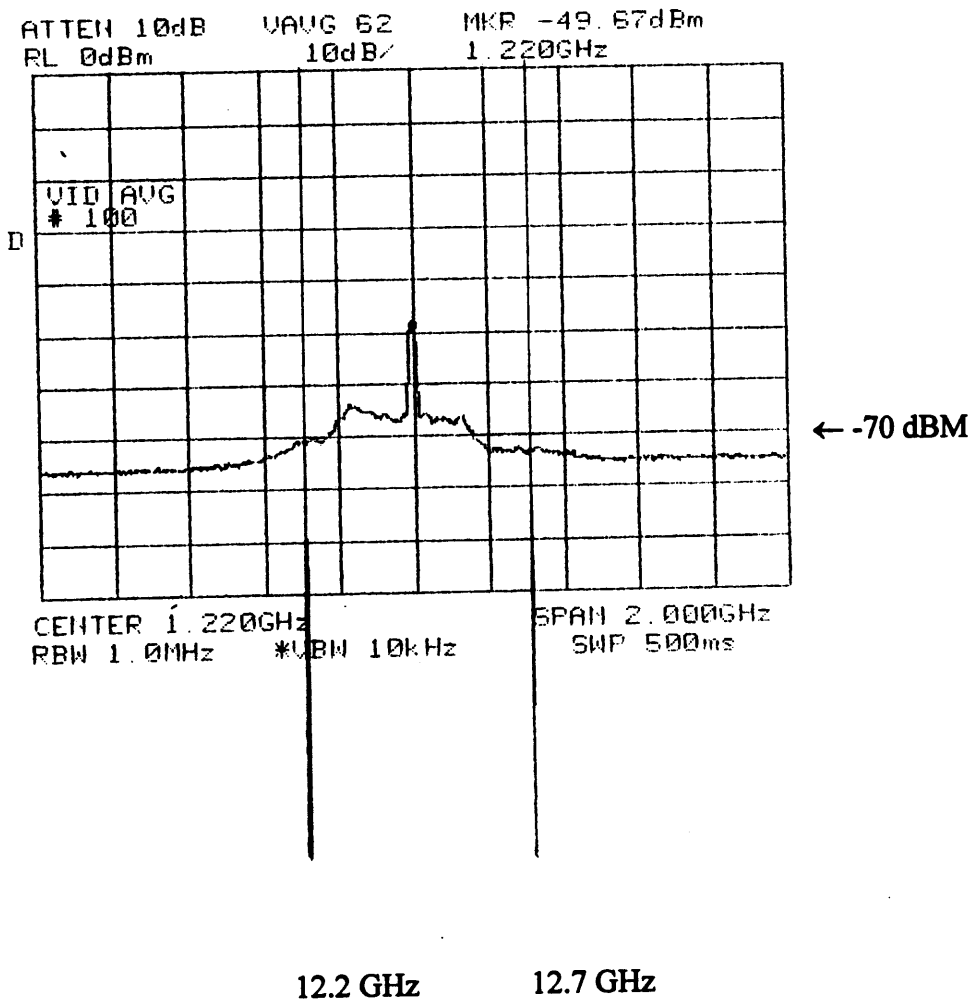
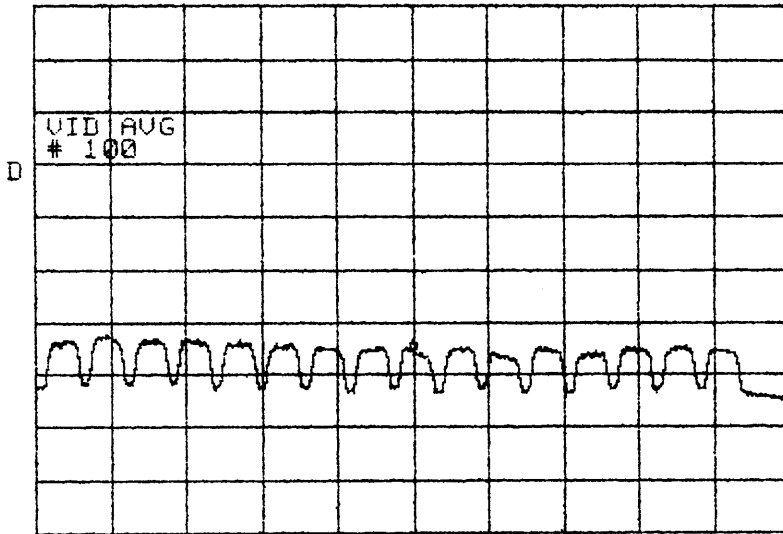


9/29/99

Plot shows Ft. Lincoln Repeater operation
(L-Band output from receive antenna LNB).



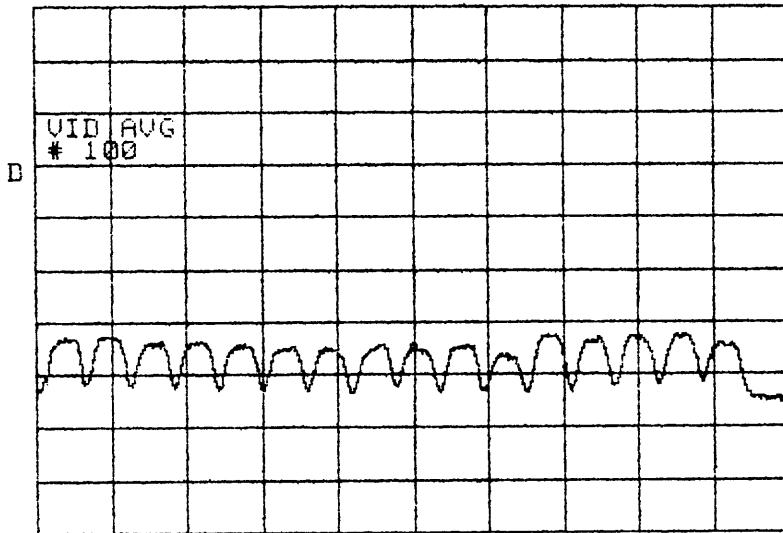
ATTEN 10dB VAUG 100 MKR -65.50dBm
RL 0dBm 10dB/ 1.2200GHz



CENTER 1.2200GHz SPAN 500.0MHz
RBW 1.0MHz *VBW 10kHz SWP 130ms

7A-2a

ATTEN 10dB UAUG 100 MKR -65.67dBm
RL 0dBm 10dB/ 1.2200GHz

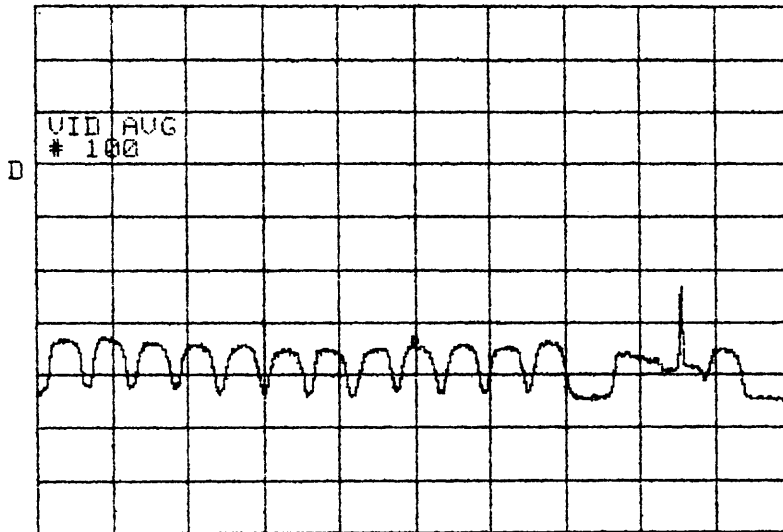


CENTER 1.2200GHz SPAN 500.0MHz
RBW 1.0MHz *VBW 10kHz SWP 130ms

7A-26

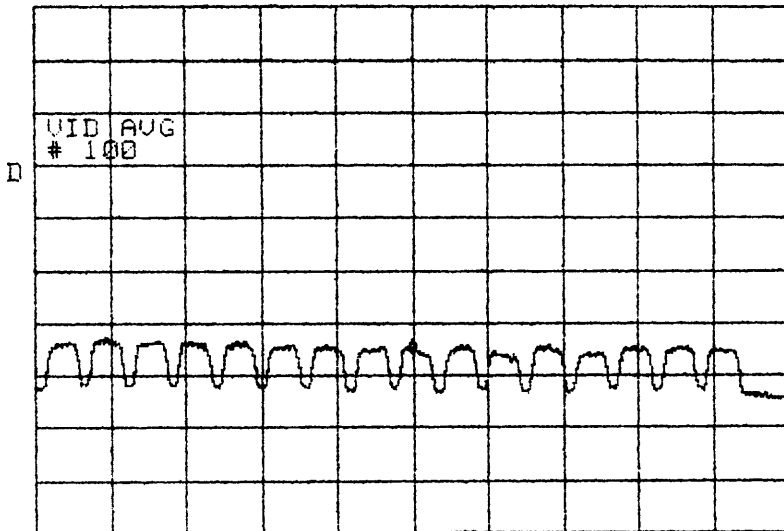
7A-2c

ATTEN 10dB VAUG 100 MKR -64.67dBm
RL 0dBm 10dB/ 1.2200GHz



CENTER 1.2200GHz SPAN 500.0MHz
RBW 1.0MHz *VBW 10kHz SWP 130ms

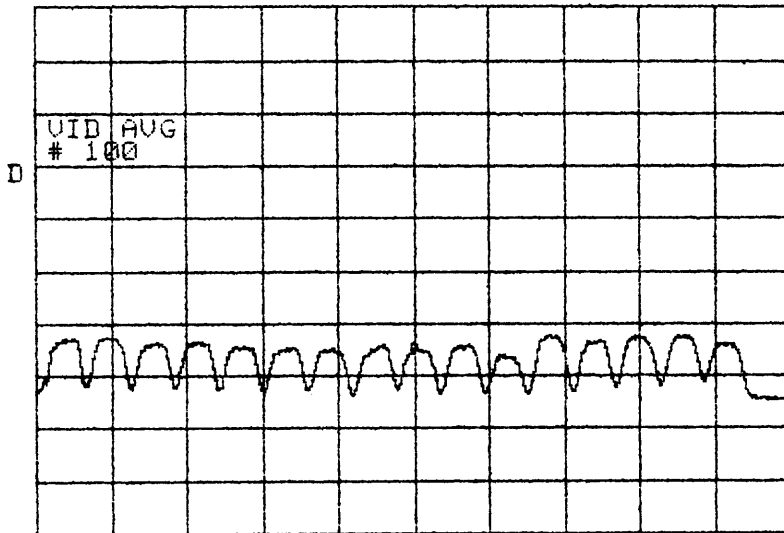
ATTEN 10dB UAUG 100 MKR -65.17dBm
RL 0dBm 10dB/ 1.2200GHz



CENTER 1.2200GHz SPAN 500.0MHz
RBW 1.0MHz *VBW 10kHz SWP 130ms

7A-3a

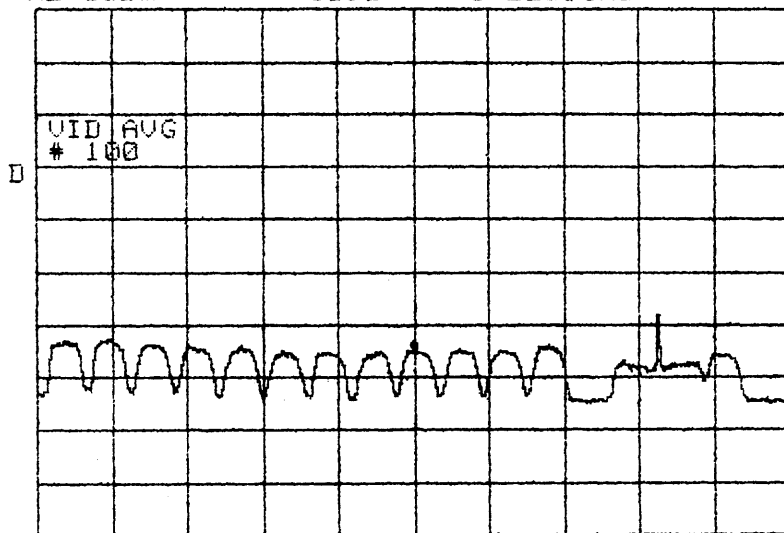
ATTEN 10dB UAUG 100 MKR -65.50dBm
RL 0dBm 10dB/ 1.2200GHz



CENTER 1.2200GHz SPAN 500.0MHz
RBW 1.0MHz *VBW 10kHz SWP 130ms

7A-3b

ATTEN 10dB VAUG 100 MKR -65.00dBm
RL 0dBm 10dB/ 1.2200GHz



CENTER 1.2200GHz SPAN 500.0MHz
RBW 1.0MHz *VBW 10kHz SWP 130ms

7A-3C

Northpoint Technology – DBS Compatibililty Test – Washington DC Area

Rx Site Location Log

Rx Site No. 7A p1
Set: 11

Site Name:

Date / Time:

'8/11/99 12:15pm EDT

Rt 110 Median

Operator:

Jonathan

GPS Receiver Reading at Site:

Lat: N 38° 53.298'

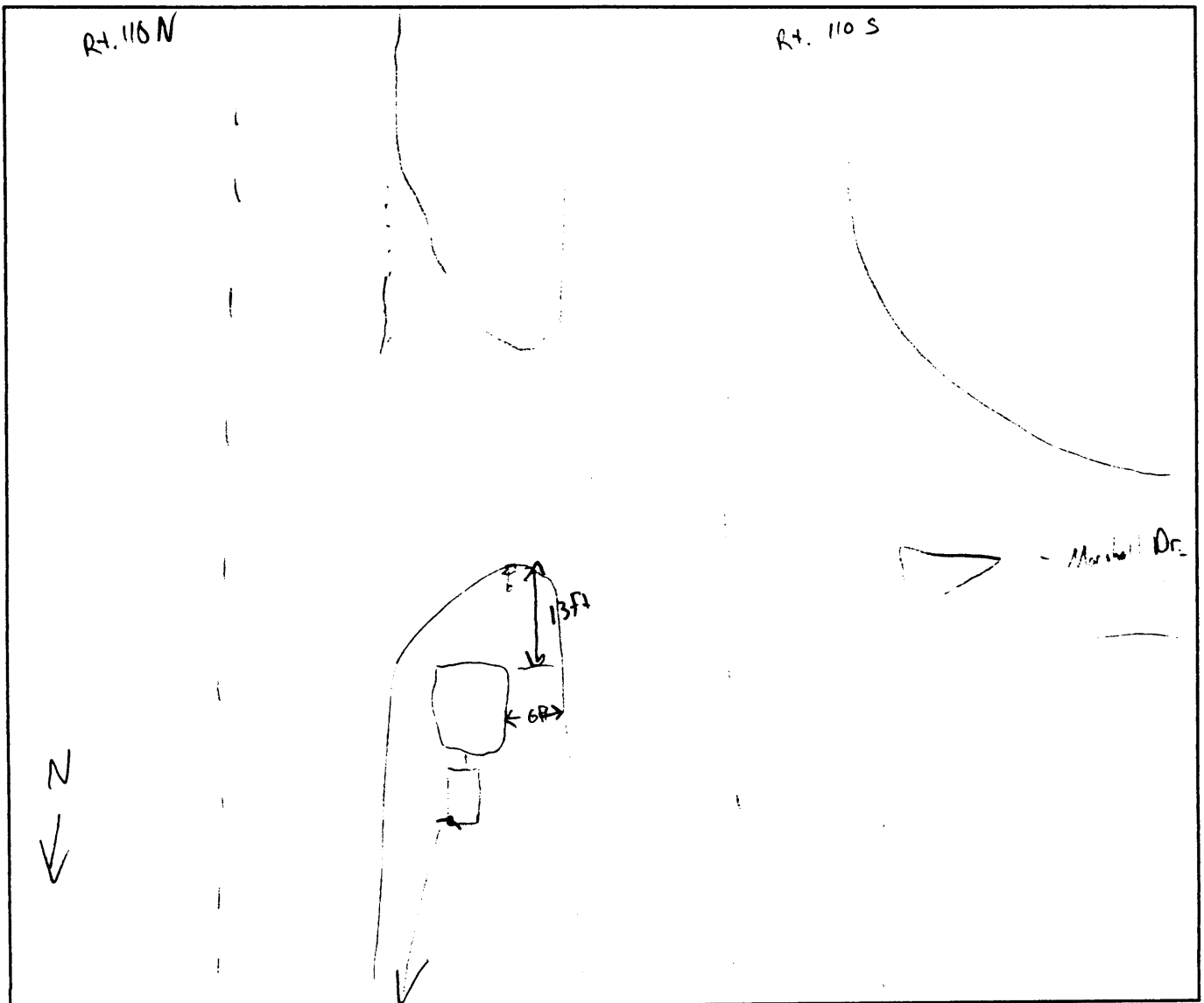
Time Read 16:15:05 ^{GMT} ~~EDT~~

Lon: W 077° 03.972'

Elev: -8

Weather: Sunny

Map Sketch (show street reference and local benchmark features):



Northpoint