

Question 4 - Directional Antenna
Information



The antenna is installed and positioned at a heading of 26 degrees and with 1 degree of vertical downtilt. www.dapacom.com
dapainfo@dapacom.com

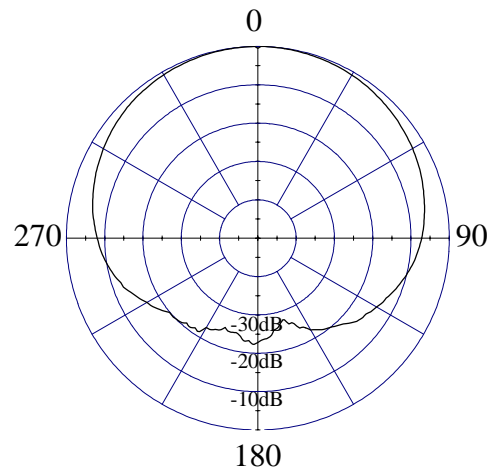
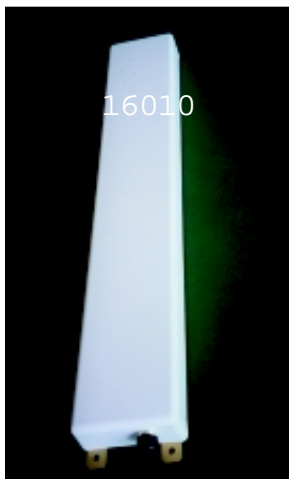
Model 16010/16010S, 113°, 14.9 dBi(12.8 dBd)Panel

ELECTRICAL CHARACTERISTICS

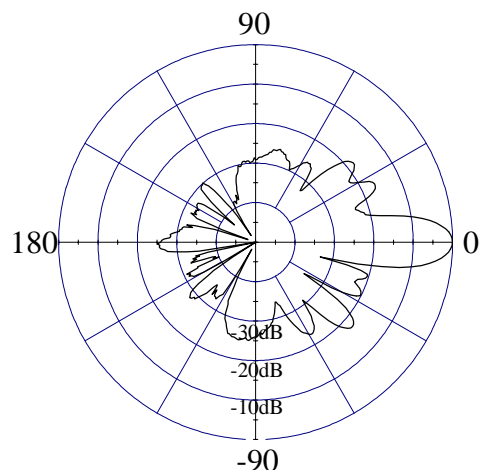
	<u>DCS / PCS</u>
Frequency Range	1710 - 1990 MHz
Beamwidth: Horizontal-plane	113° ± 4° (at -3 dB)
Vertical-plane	10° ± 1° (at -3 dB)
Max/Min Gain	14.9/13.9 dBi (12.8/11.8 dBd)
Electrical Downtilt	0° (available -2°, -3°)
Side Lobes	≤ -15 dB
Front-to-Back Ratio	≤ -24 dB

GENERAL CHARACTERISTICS

Impedance	50 Ω
VSWR	≤ 1.4:1
Polarization	Vertical
Rated Power	500 W



HORIZONTAL - PLANE



VERTICAL - PLANE

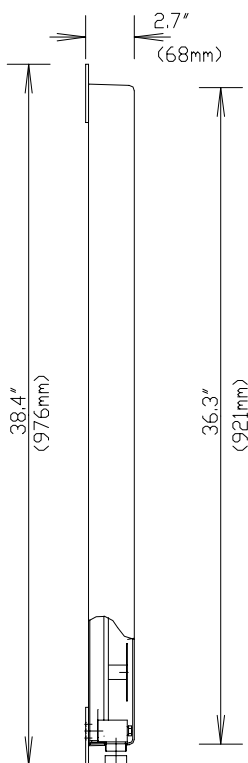


Model 16010/16010S, 113°, 14.9 dBi(12.8 dBd) Panel

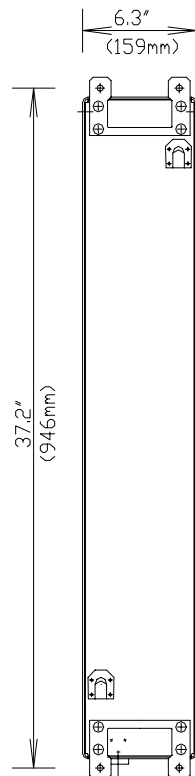
MECHANICAL CHARACTERISTICS

Height x Width x Depth	36.3" x 6.3" x 2.7" (921 x 159 x 68 mm)
Weight	7.5 lbs (3.4 kg)
Wind Survival Rating	125 mph (200 km/h)
Wind Load (at 100 mph)	231N (frontal F1) 104 N (lateral F2)
Flat Plate Equivalent Area	1.58 ft ² (0.15 m ²)
Connector Types (Female)	7/16 DIN (Type N available)
Materials:Antenna/Radome	Aluminum / ABS

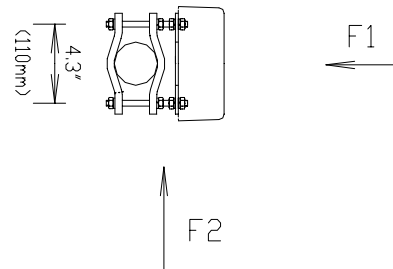
SIDE VIEW



REAR VIEW



TOP VIEW



MOUNTING HARDWARE

Mounting Brackets	Fix 903 (1.25" - 3.5" OD pipe) (30 - 90 mm OD pipe)
Mechanical Tilt Brackets (optional)	Model TB-6 / TB-S Model TB-6A (rear connector option)



DB844H90E-XY

Directed Dipole Antenna

DECIBEL®
Base Station Antennas

- Excellent azimuth roll-off, 15-20% reduction in cell to cell overlap
- Superior front to back ratio
- Low profile, low wind load for easy zoning
- Outstanding field record, with thousands of units deployed, world wide

ELECTRICAL

Frequency (MHz) :	806 - 896	870 - 960
Polarization :	Vertical	Vertical
Gain (dBd/dBi) :	12/14.1	12.4/14.5
Azimuth BW (Deg.):	90	90
Elevation BW (Deg.):	15	15
Beam Tilt (Deg.):	0	0
USLS* (dB) :	>15	>15
Front-To-Back Ratio* (dB) :	40	40
VSWR :	<1.35:1	<1.35:1
Max. Input Power (Watts) :	500	500
Impedance (Ohms) :	50	50
Lightning Protection :	DC Ground	DC Ground

Question 4 - Directional Antenna Information

The antenna is installed and positioned at a heading of 26 degrees and with 1 degree of vertical downtilt.



MECHANICAL

Weight :	6.3 kg (14 lb)
Dimensions (LxWxD) :	1,219 x 165 x 203 mm (48 x 6.5 x 8 in)
Max. Wind Area :	0.10 m ² (1.1 ft ²)
Max. Wind Load (@ 100 mph) :	262.4 N (59 lbf)
Max. Wind Speed :	241 km/h (150 mph)
Hardware Material :	Galvanized Steel
Connector Type :	7-16 DIN - Female (1, Back)
Color :	Light Gray
Standard Mounting Hardware :	DB380
Standard Downtilt Mounting Hardware :	DB5083



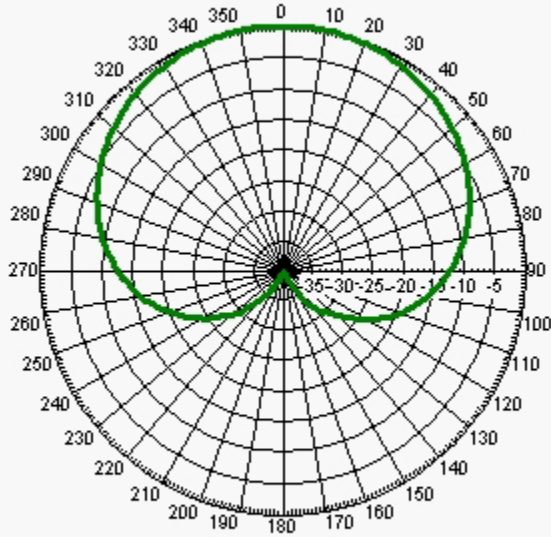
DB844H90E-XY

Directed Dipole Antenna

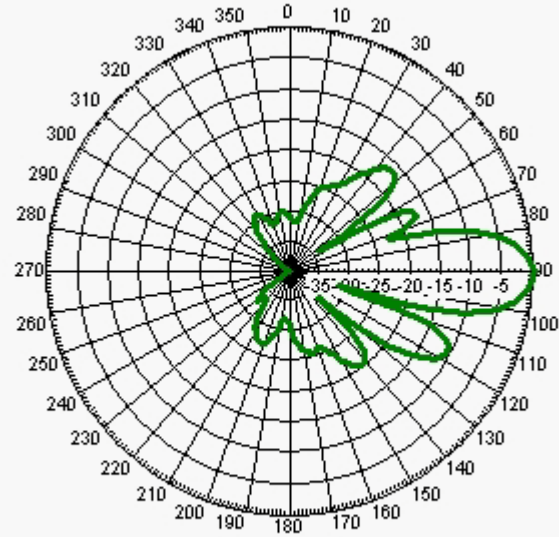
DECIBEL
Base Station Antennas

AZIMUTH PATTERN

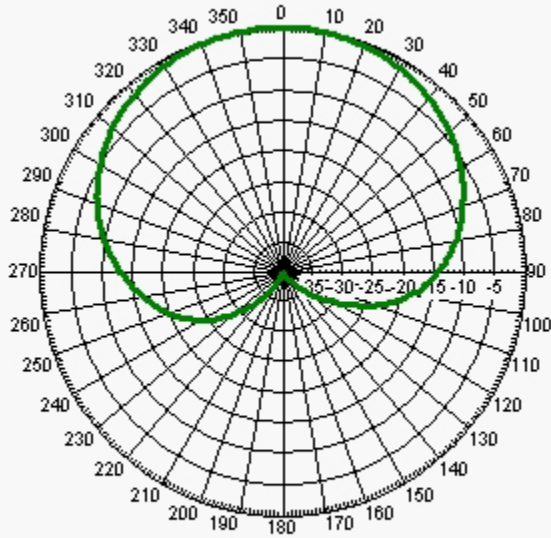
ELEVATION PATTERN



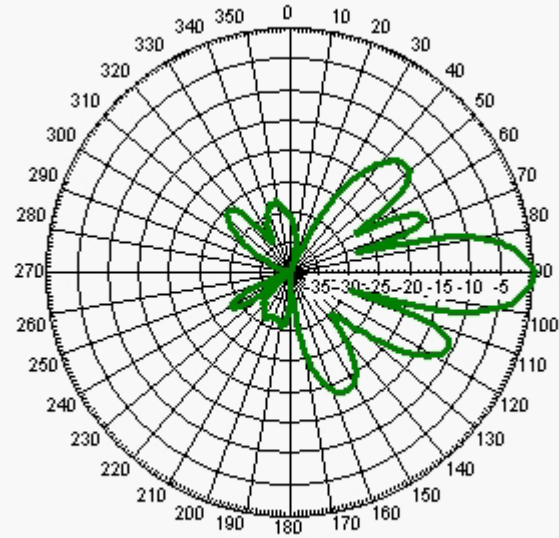
Freq: 860 MHz, Tilt: 0



Freq: 860 MHz, Tilt: 0



Freq: 940 MHz, Tilt: 0



Freq: 940 MHz, Tilt: 0