

## 4.9 - 5.4 GHz Subscriber Antenna

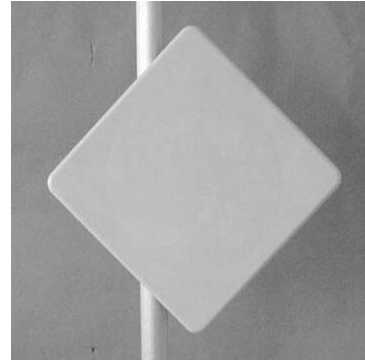
[Contact](#)

### MA-WA49-1X

**Mars 4.9 - 5.4 GHz Antenna** provides a cost effective solution for large scale WLL, UNII and for public safety applications.

Additional Features:

- Minimum Gain of 21 dBi over the entire frequency range.
- Light weight and durable construction.
- DC grounded for lightning protection to meet local electrical building codes.



#### Specifications:

Electrical	
Frequency range	4.9 - 5.4 GHz
GAIN, min.	21 dBi
VSWR, max.	1.9:1
Polarization	Linear Vertical
3 dB Beam Width - Az./El., typ.	10.5°
Cross Polarization, min	24 dB
Power Handling	10 Watts
Input Impedance	50 Ohms
Front to Back Ratio, min.	35 dB
Mechanical and Environmental	
Dimensions (LxWxD)	305x305x15 mm (DIAMOND Shape)
Base Plate	Aluminum, Coated
Radome	Plastic, UV protected
Temperature	-40°C up to +75°C
Input/RF Interface	N-Type (others available)

Mounting Hardware

Pole Mount & Brackets - Standard  
Optional - MNT-2 Az/ El adjustable  
mount