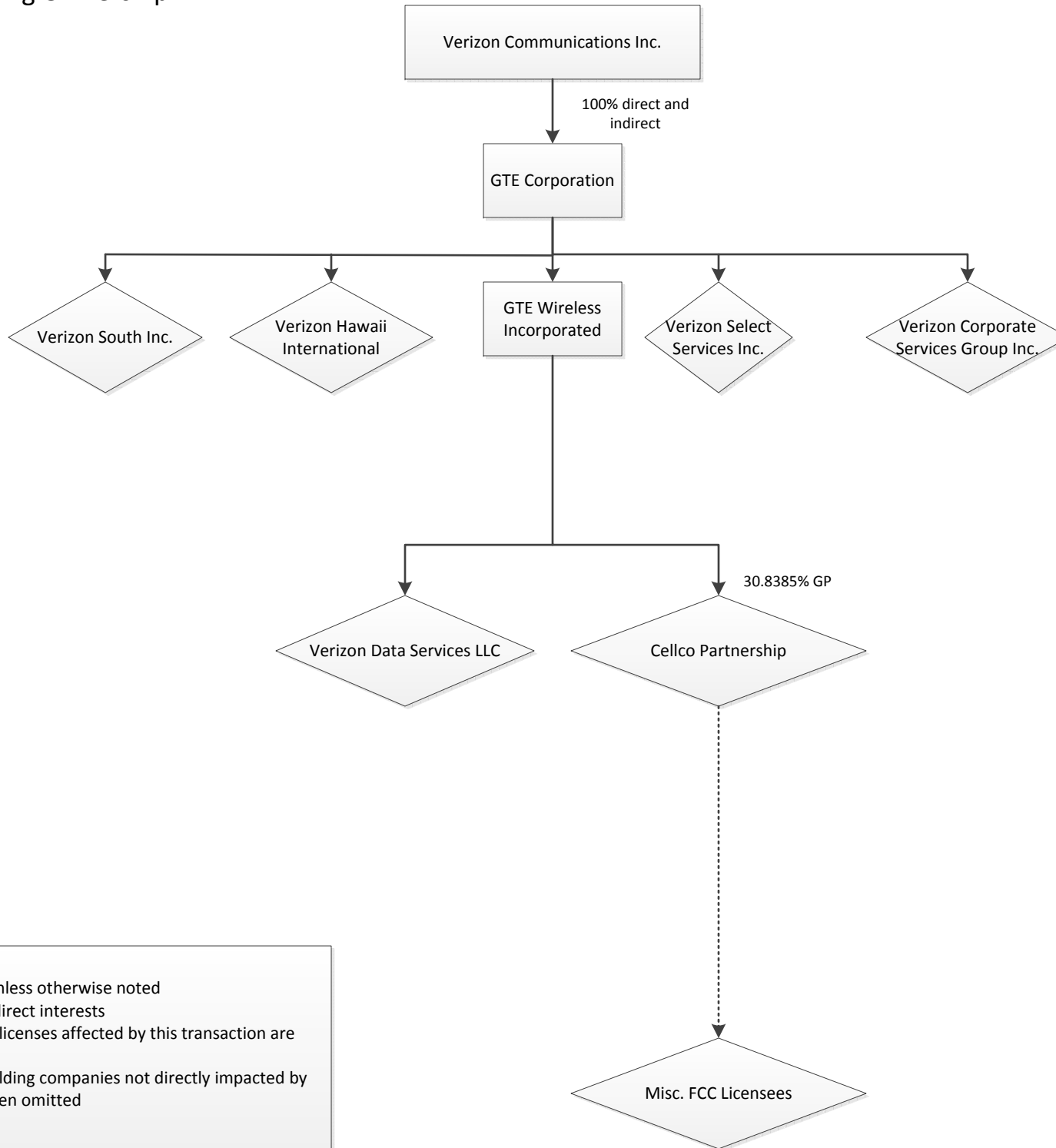


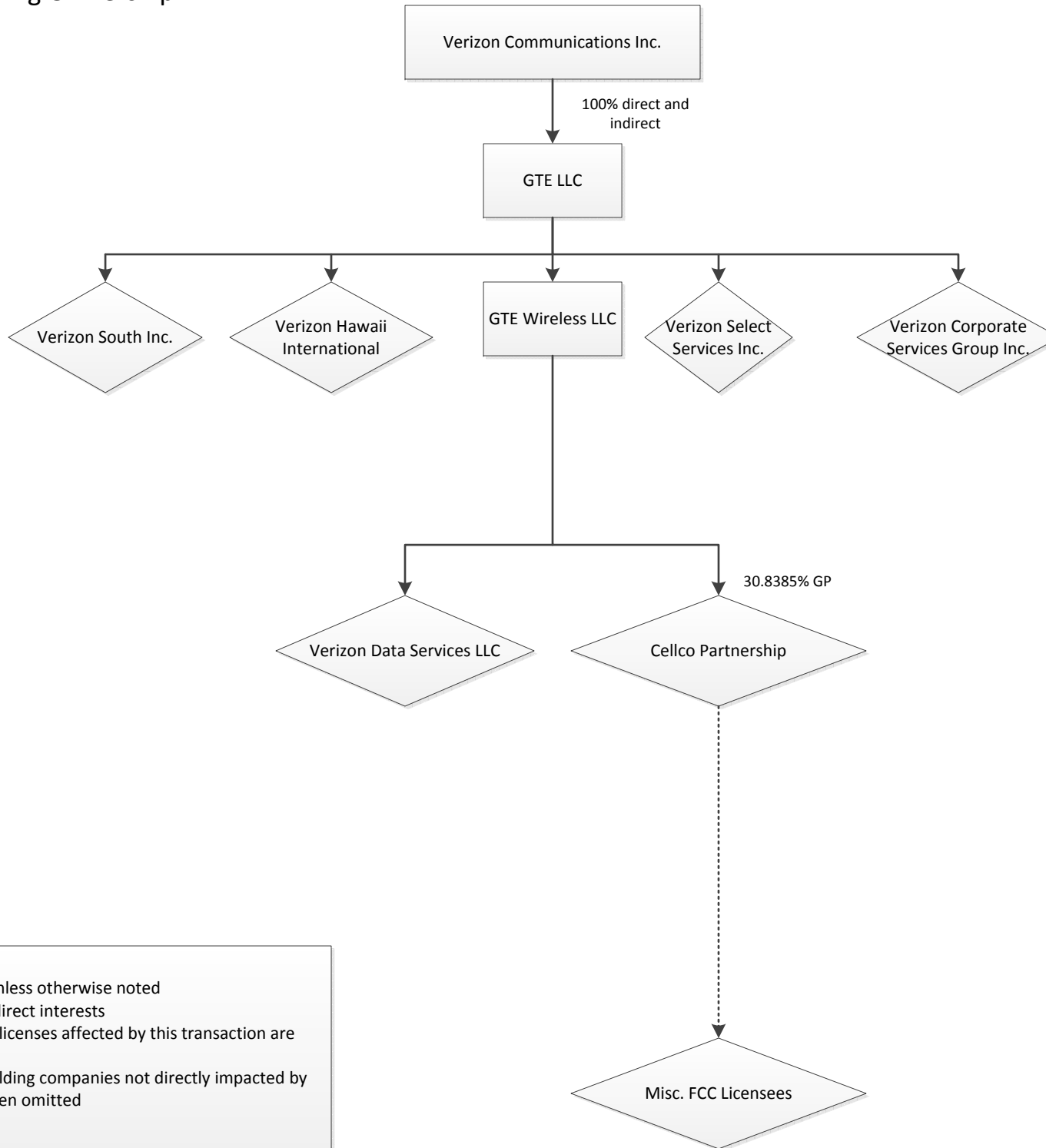
Pre-Restructuring Ownership



Notes:

- All interests are 100% unless otherwise noted
- Dotted lines indicate indirect interests
- Companies holding FCC licenses affected by this transaction are presented as diamonds
- Certain intermediate holding companies not directly impacted by this transaction have been omitted

Post-Restructuring Ownership



Notes:

- All interests are 100% unless otherwise noted
- Dotted lines indicate indirect interests
- Companies holding FCC licenses affected by this transaction are presented as diamonds
- Certain intermediate holding companies not directly impacted by this transaction have been omitted