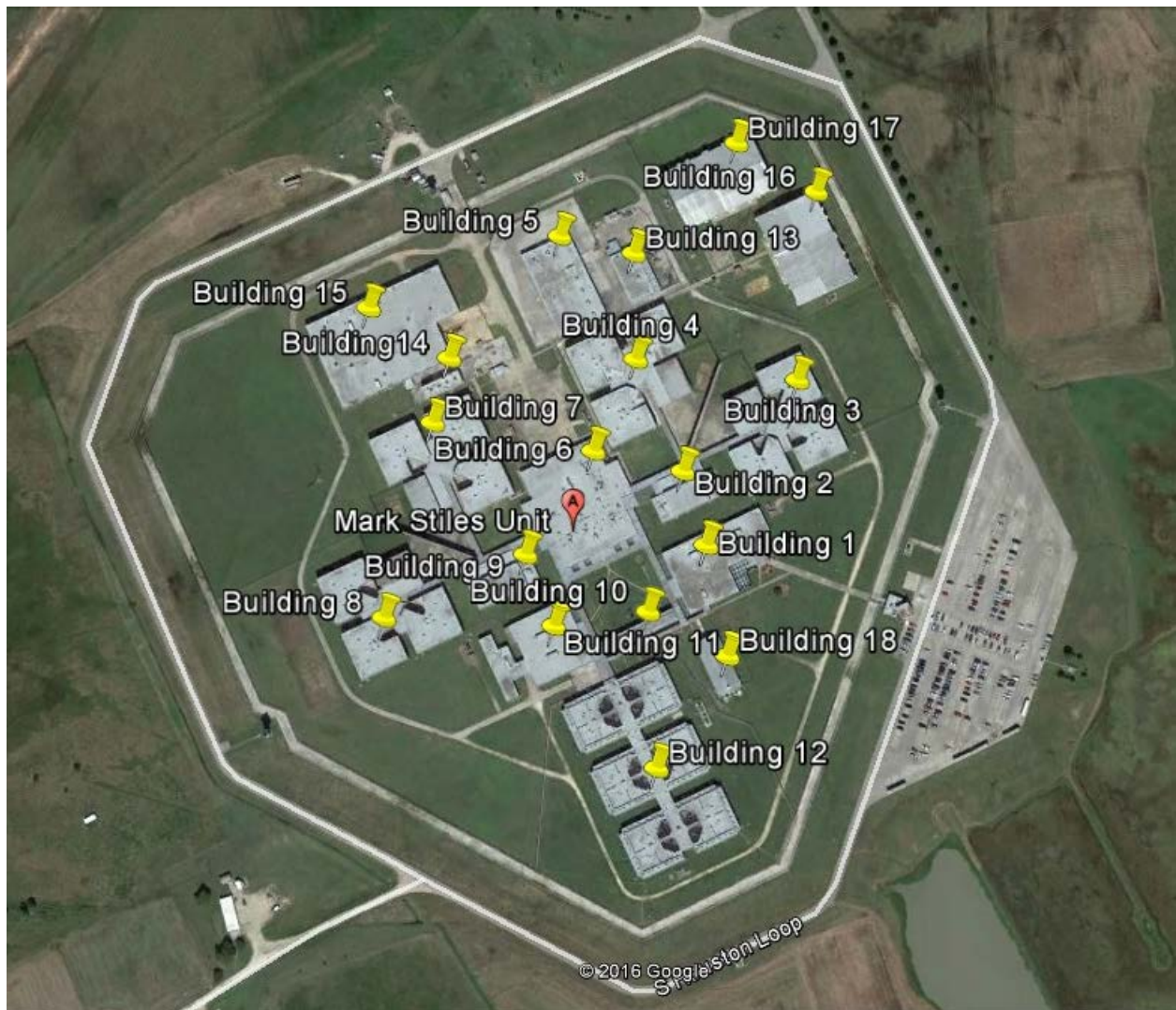


**Mark Stiles Unit**  
**3060 Farm to Market Rd. 3514**  
**Beaumont, TX 77705**  
**Jefferson County**

Figure 1 below shows the layout of the Mark Stiles Unit buildings. Table 1 provides the latitude and longitude for each building. Each building is treated as an emission source. All antennas are internal to the buildings. There are no external MAS antennas in use at the facility. The internal antennas are a mix of directional and omnidirectional antennas. One distributed antenna system (DAS) with a common set of antennas inside each building supports LTE, GSM, UMTS and CDMA.

**Figure 1: Mark Stiles Unit Institution**



**Table 1: Latitude and Longitude of Building locations**

<b>Location</b>	<b>Latitude</b>	<b>Longitude</b>
Building 1	29°59'16.70"N	94° 3'5.41"W
Building 2	29°59'18.45"N	94° 3'6.03"W
Building 3	29°59'20.63"N	94° 3'2.89"W
Building 4	29°59'21.13"N	94° 3'7.32"W
Building 5	29°59'24.13"N	94° 3'9.42"W
Building 6	29°59'18.93"N	94° 3'8.47"W
Building 7	29°59'19.61"N	94° 3'12.86"W
Building 8	29°59'15.00"N	94° 3'14.10"W
Building 9	29°59'16.48"N	94° 3'10.30"W
Building 10	29°59'14.81"N	94° 3'9.52"W
Building 11	29°59'15.14"N	94° 3'6.98"W
Building 12	29°59'11.53"N	94° 3'6.76"W
Building 13	29°59'23.71"N	94° 3'7.37"W
Building 14	29°59'21.16"N	94° 3'12.43"W
Building 15	29°59'22.38"N	94° 3'14.67"W
Building 16	29°59'25.23"N	94° 3'2.31"W
Building 17	29°59'26.43"N	94° 3'4.52"W
Building 18	29°59'14.11"N	94° 3'4.85"W