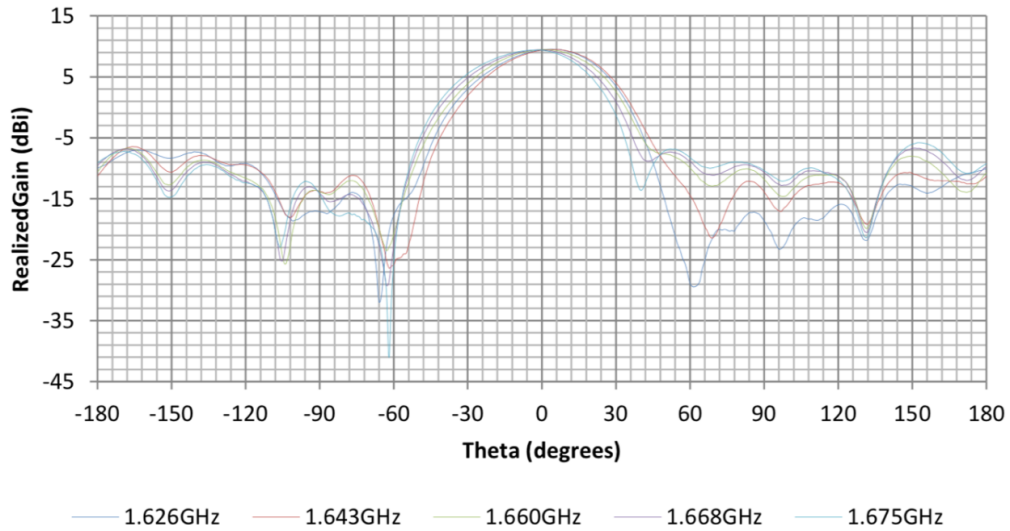


Antenna Gain Patterns for New/Modified Transmissions

0228-EX-CM-2020

1665-1675 MHz / 1626.5 – 1660.5 MHz — LEO to GEO

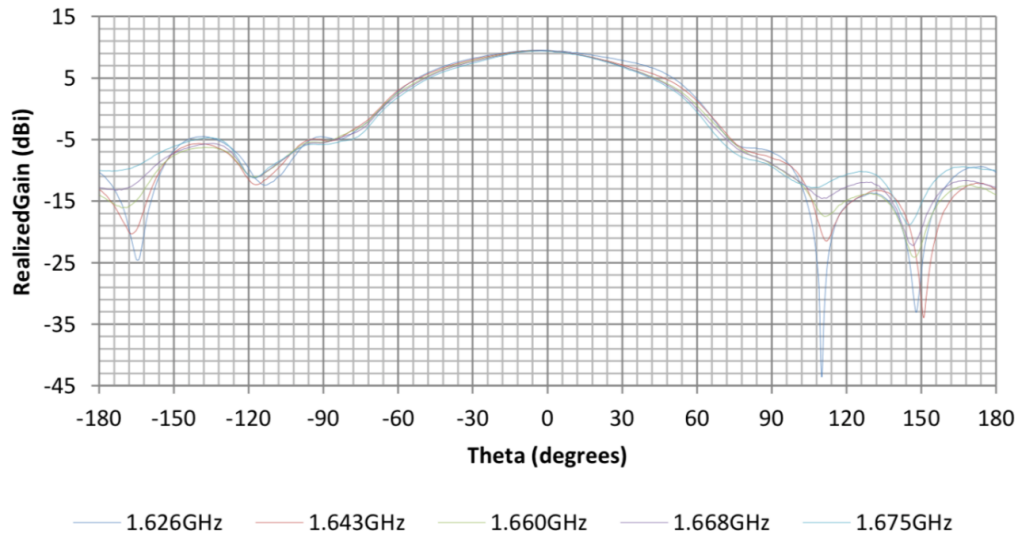
Radiation Patterns of RHCP in the E-plane at TX



S

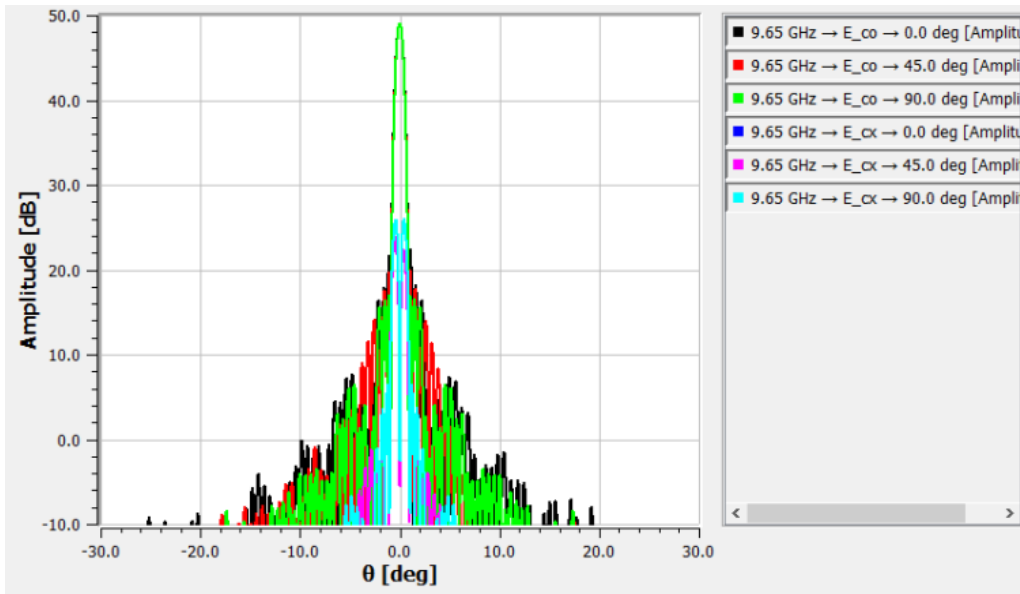
Capella Space-to-Space Downlink E-Plane Gain Pattern

Radiation Patterns of RHCP in the H-plane at TX

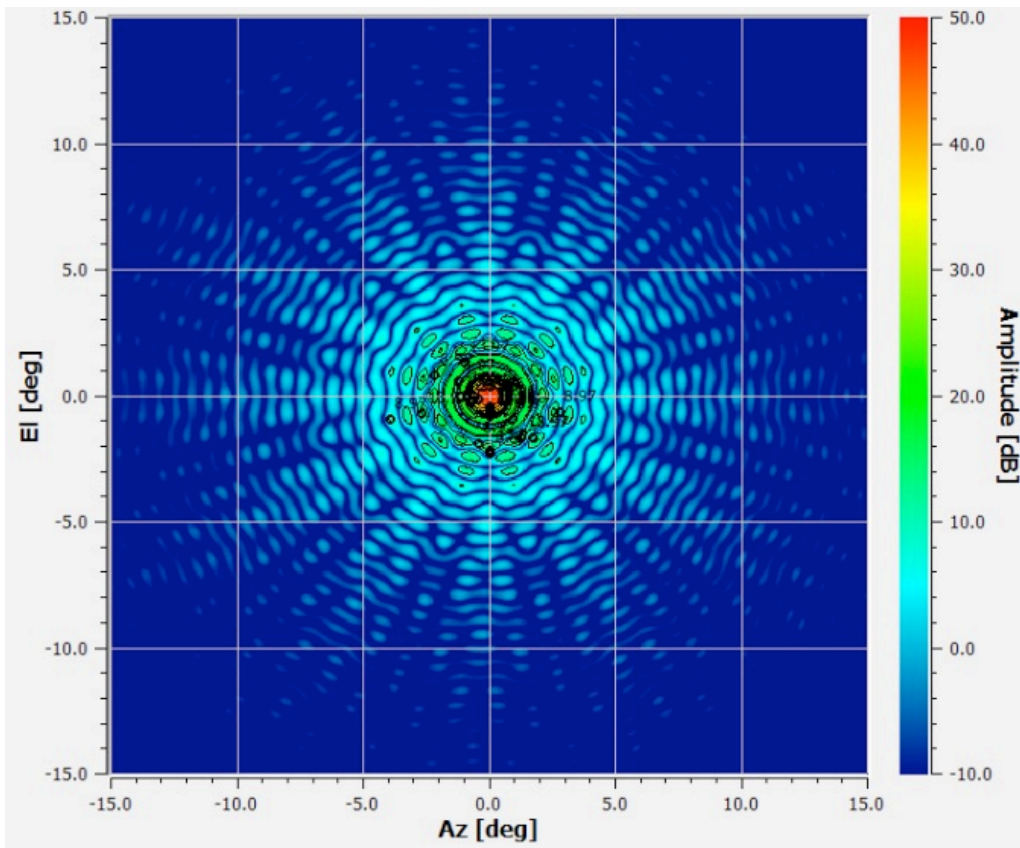


Capella Space-to-Space Downlink H-Plane Gain Pattern

9650 MHz — SAR

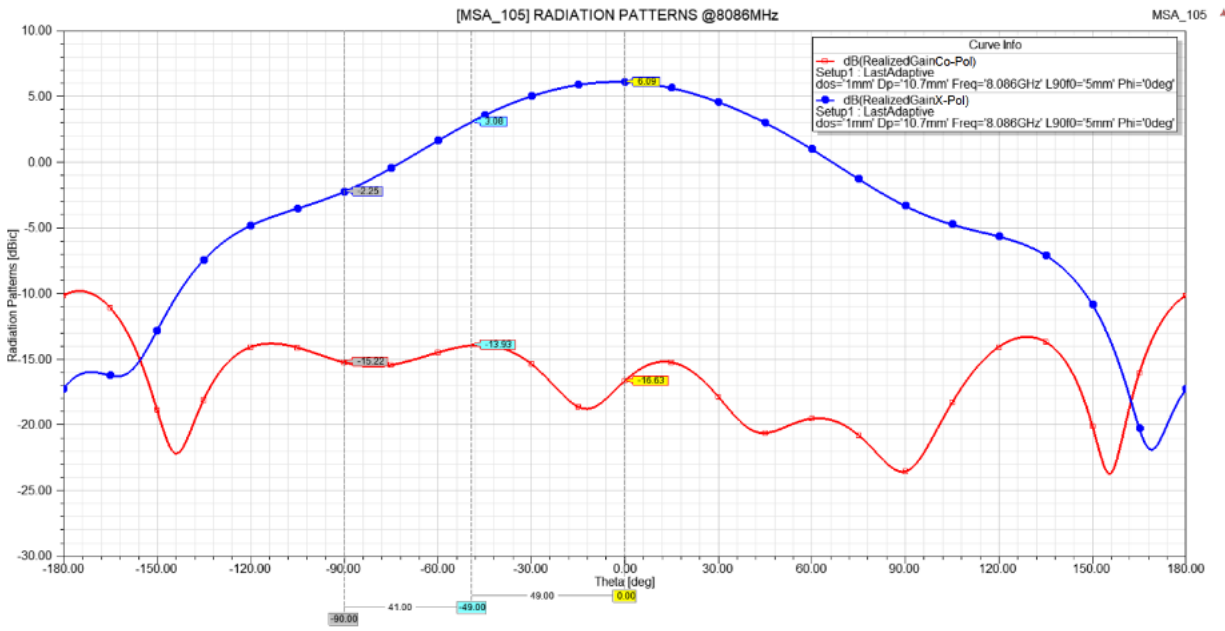


Capella X-Band SAR Antenna Gain Patterns



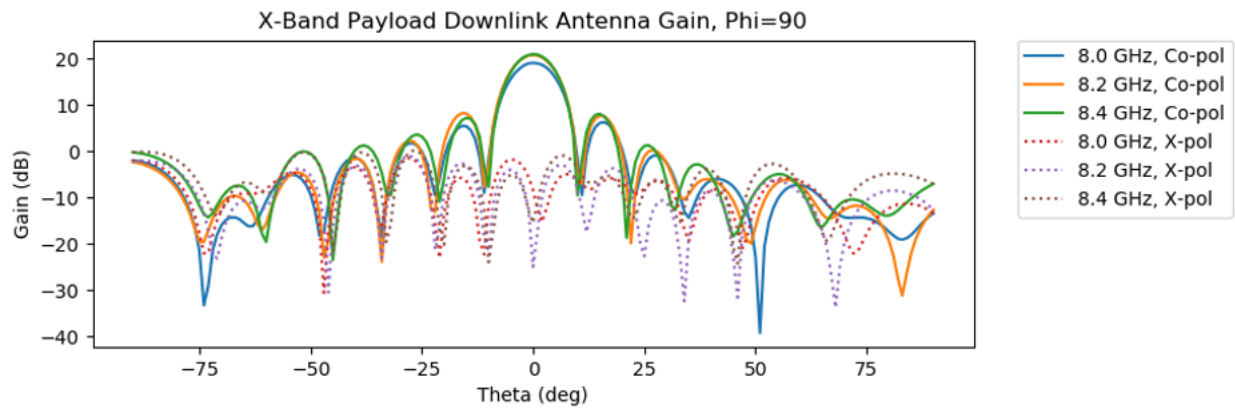
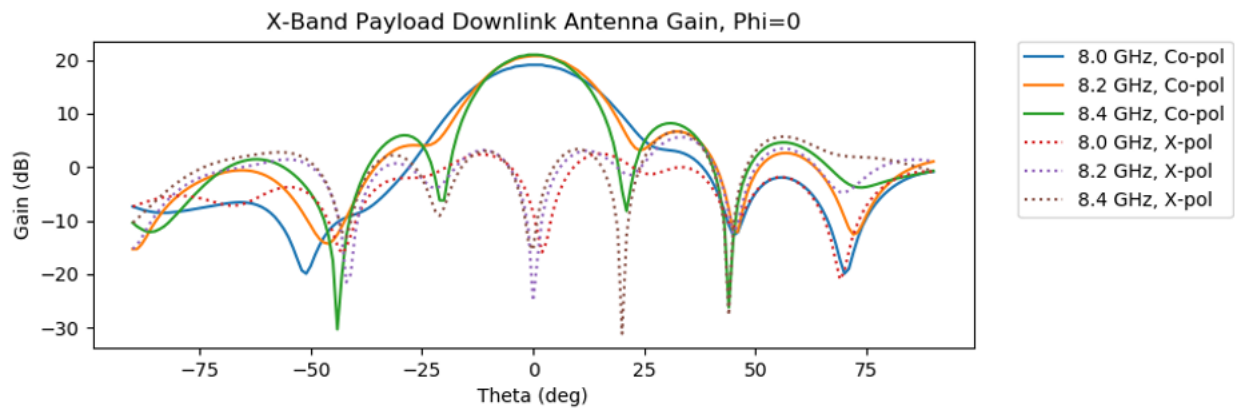
Capella X-Band SAR Antenna Gain Contours

8025-8029 MHz — TT&C Downlink



Capella TT&C Downlink Gain Pattern

8025-8400 MHz — High Data Rate Downlink



Capella High Data Rate Downlink Gain Pattern