

Base Station Antenna 17DBI 90° Dual Slant Polarity Sector Antenna CCG2.5-90deg-DP

ENVIROMENTAL

Category	Period	Temperature	Comments
Low Temperature	72h	-67F/-55C	
High Temperature	72h	160F/71C	
Cycling Temp	1h	-49F to 158F/-45C to 70C	3 Cycles
Vibration	30min/axis	-	Random 4M5
Impact Mechanical	-	-	4M5
Humidity	144h	-	95%
Moisture	-	-	IP54
Solar Radiation	1000h	-	-
Flame Retardent	-	-	HB 54

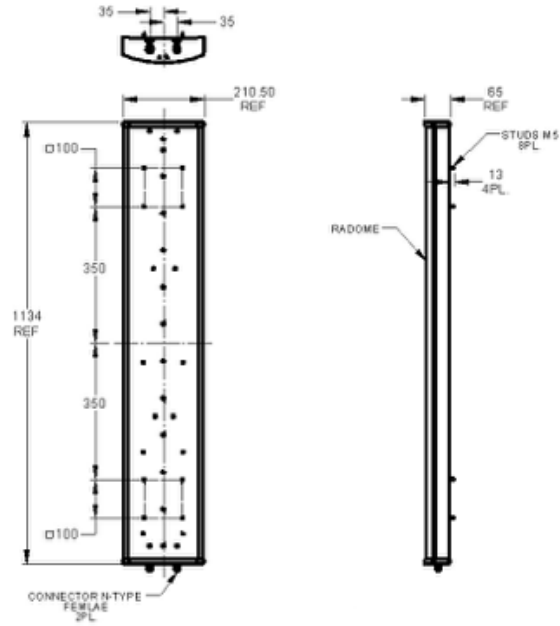
MECHANICAL

Category	Specifications	Metric	Comments
Dimensions	44.6"x8.3"x2.5"	134mmx211mmx65mm	
Connector	2xN-Type Female	-	50 ohm hardline cable
Mecchanical Down Tilt	0 to 10 Deg	-	
Weight	9.9lbs	4.5Kg	
Radome Material	Plastic	-	
Base Plate Material	Aluminum with Coating	-	

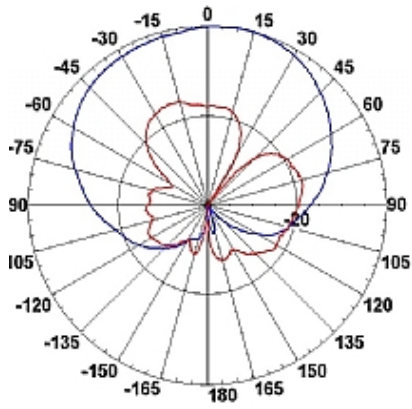
ELECTRICAL

Category	Specifications	Metric	Comments
Frequency Range	2.3-2.7GHz	-	
Gain	16dBi+/- 0.5dB	-	
VSWR	1.6:1 typ to 1.8:1 max	-	
Polarization	Dual Linear +/- 45 Deg	-	
-3dB Elevation Beam	7 Deg typ	-	
-3dB Azimuth Beam	90 Deg typ	-	
Elevation Sidelobe	-12dB typ	-	
F/B Ratio	-35dB max	-	
Cross Polarization	-15dB max to -20dB typ	-	
Port to Port Isolation	-15dB max to -20dB typ	-	
Power	20W CW to 250W peak	-	
Input Impedance	50 ohm	-	
Lighting Protection	DC Grounded	-	

Physical Specifications:



Connection 1 AZ Freq: 2.5GHz



Connection 1 EL Freq: 2.5GHz

