

## ANTENNA DESCRIPTION

### Equipment Information:

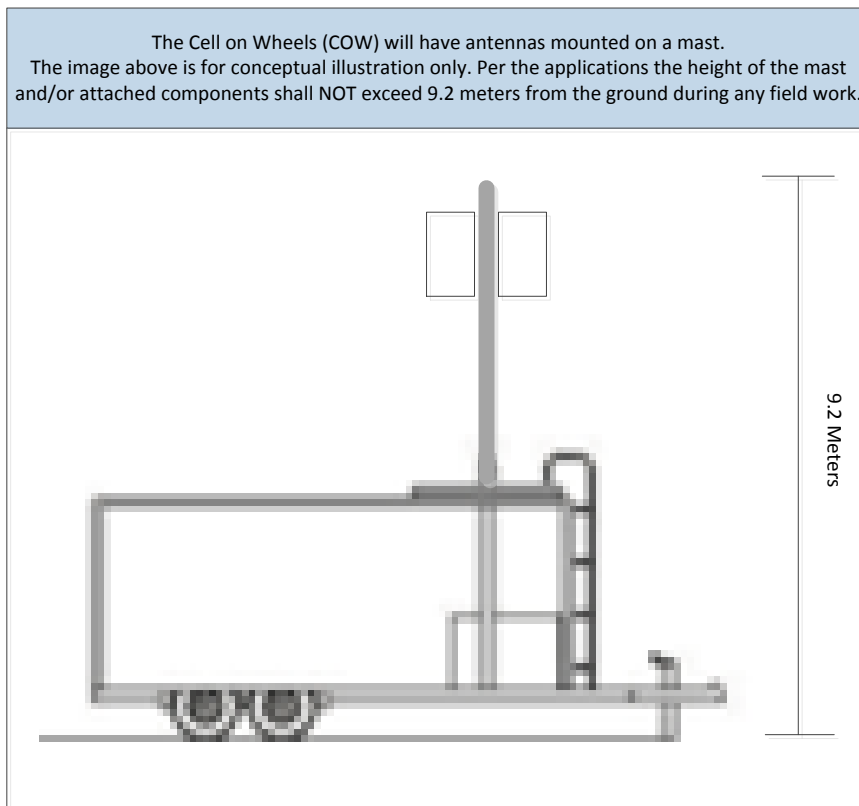
Manufacturer: Samsung

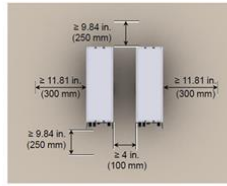
Modulation schemes: MultiPoint to MultiPoint Integrated Antenna

Station modulation rates: QPSK, 16 QAM, 64 QAM

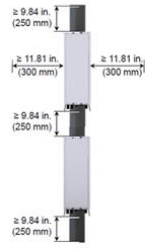
Mean Peak power: 54.6 dBm

The antennas will be mounted on a mobile trailer (or Cell On Wheels) and van with hydraulic masts, which will be moved to each of the requested test locations. All the locations are owned by Charter and operated as hub sites, headends and offices. In most cases surrounding buildings and/or foliage are taller than the masts; significant nearby natural features and manmade structures are identified in the Form 442 site descriptions. The trailer mast can be raised to 9.2 meters, but the van mast will not exceed 6 meters. The masts on both the trailer and van will only be raised when testing is being conducted.





Horizontal Type



Vertical Type